

### Listening Test, Part 1

In this part, you will hear 25 short conversations. After each conversation, you will hear a question about it. You will hear each conversation and question once. The answer choices are shown as pictures. In the actual examination, mark your answers on the separate answer sheet, not in the test booklet. You should choose A, B or C.

▶ 0:00 / 0:00

1 ○ A



○ B



○ C



2 ○ A



○ B



○ C



3 ○ A



○ B



○ C



4 ○ A



○ B



○ C



5 ○ A



○ B



○ C



6

○ A



○ B



○ C



7

○ A



○ B



○ C



8

○ A



○ B



○ C



9

○ A



○ B



○ C



10

○ A



○ B



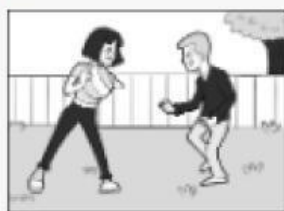
○ C



11 ○ A



○ B



○ C



12 ○ A



○ B



○ C



13 ○ A



○ B



○ C



14 ○ A



○ B



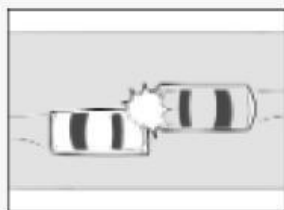
○ C



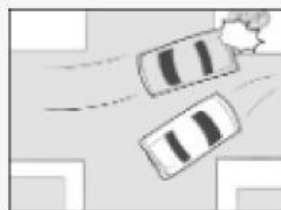
15 ○ A



○ B



○ C



16 ○ A



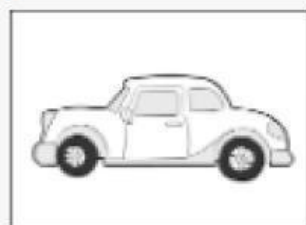
○ B



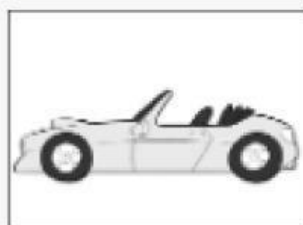
○ C



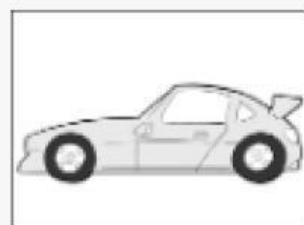
17 ○ A



○ B



○ C



18 ○ A



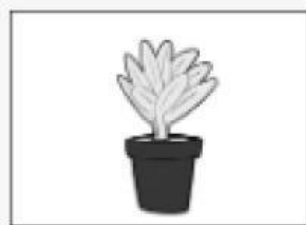
○ B



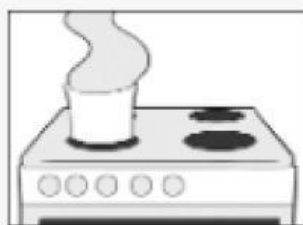
○ C



19 ○ A



○ B



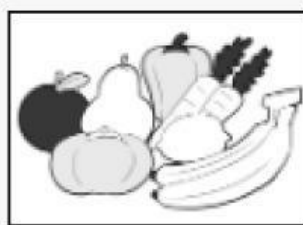
○ C



20 ○ A



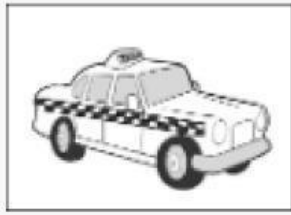
○ B



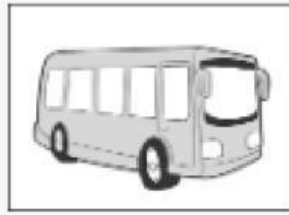
○ C



21 ○ A



○ B



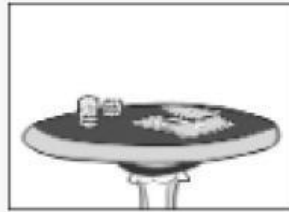
○ C



22 ○ A



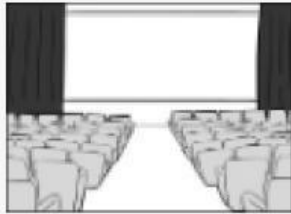
○ B



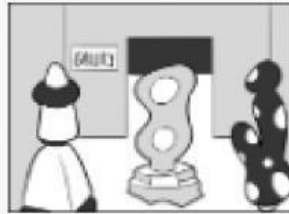
○ C



23 ○ A



○ B



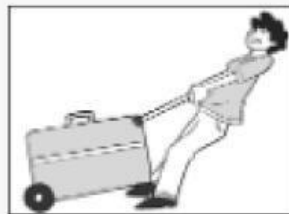
○ C



24 ○ A



○ B



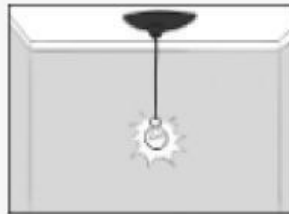
○ C



25 ○ A



○ B



○ C

