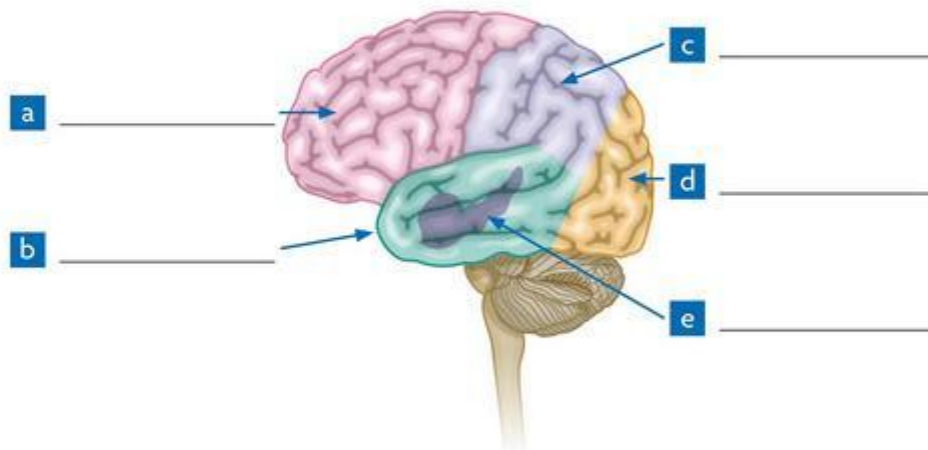


PREPARING TO LISTEN

- 1 You are going to listen to a lecture on how the brain makes and uses mental maps. Before you listen, work with a partner. Study the diagram of the brain. Read the description of the parts and then label the diagram.



USING YOUR KNOWLEDGE

frontal lobe

- located at the front of the skull
- associated with reasoning, planning, speech, emotions, and problem solving

parietal lobe

- located at the top/back of the skull
- associated with movement, orientation, perception

occipital lobe

- located at the back of the skull
- associated with vision

temporal lobe

- located at the bottom of the brain
- associated with perception, hearing, memory, and speech

hippocampus

- located deep inside the temporal lobe
- associated with spatial memory and navigation

- 2 Work with a partner. Only one of these statements about the brain is true. Which one do you think it is?

- a Human intelligence is related to brain size. ☐
- b Many people use only about 10% of their brains. ☐
- c Some people are "right-brained" and others are "left-brained." ☐
- d Some people have memories like a camera. ☐
- e If you get hit on the head, you could lose your whole memory. Another hit on the head may bring it back. ☐
- f One area of the brain specializes in understanding stories. ☐
- g Men's and women's brains are fundamentally different. ☐