

## GRADE 3 - Unit 7 - TOYS

### Exercise 1: Look and draw line. (4 questions)

on



under



in



toy box



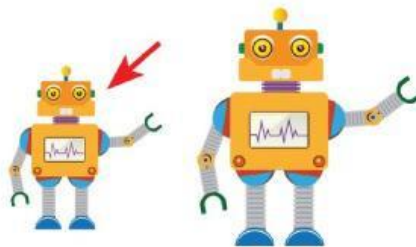
wardrobe

### Exercise 2: Look, read and write. (3 questions)



**Example:** What can you see?

I can see a *big doll*.



What can you see?

I can see a (5) \_\_\_\_\_.



What can you see?

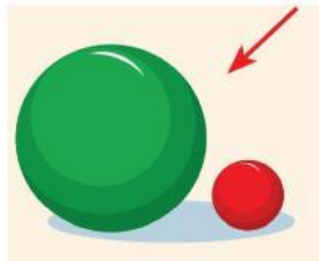
I can (6) \_\_\_\_\_ a (7) \_\_\_\_\_.

### Exercise 3: Look, read and write. (5 questions)



**Example:** What can you see ?

I (8) \_\_\_\_\_ see an (9) \_\_\_\_\_.



What (9) \_\_\_\_\_ you (10) \_\_\_\_\_?

I can (11) \_\_\_\_\_ (12) \_\_\_\_\_.

## Exercise 4: Look and write. (3 questions)



This is my toy box. I can see: a green  
(13)\_\_\_\_\_, a small (14)\_\_\_\_\_,  
and two yellow (15)\_\_\_\_\_.

What can you see in your toy box?

**---THE END---**