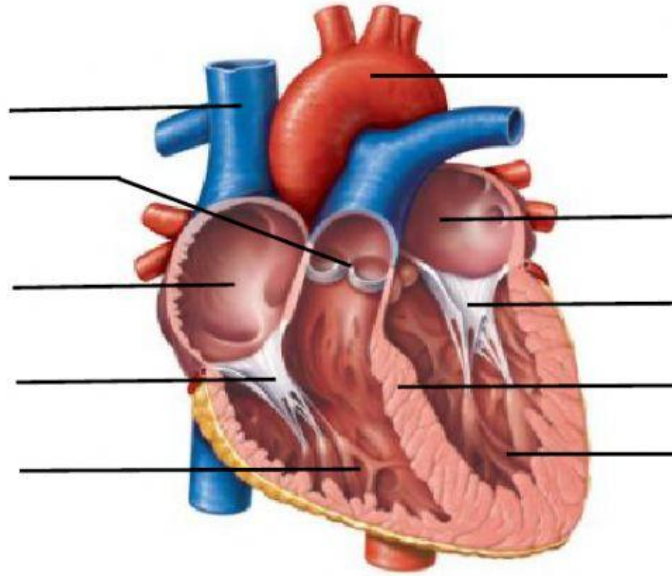
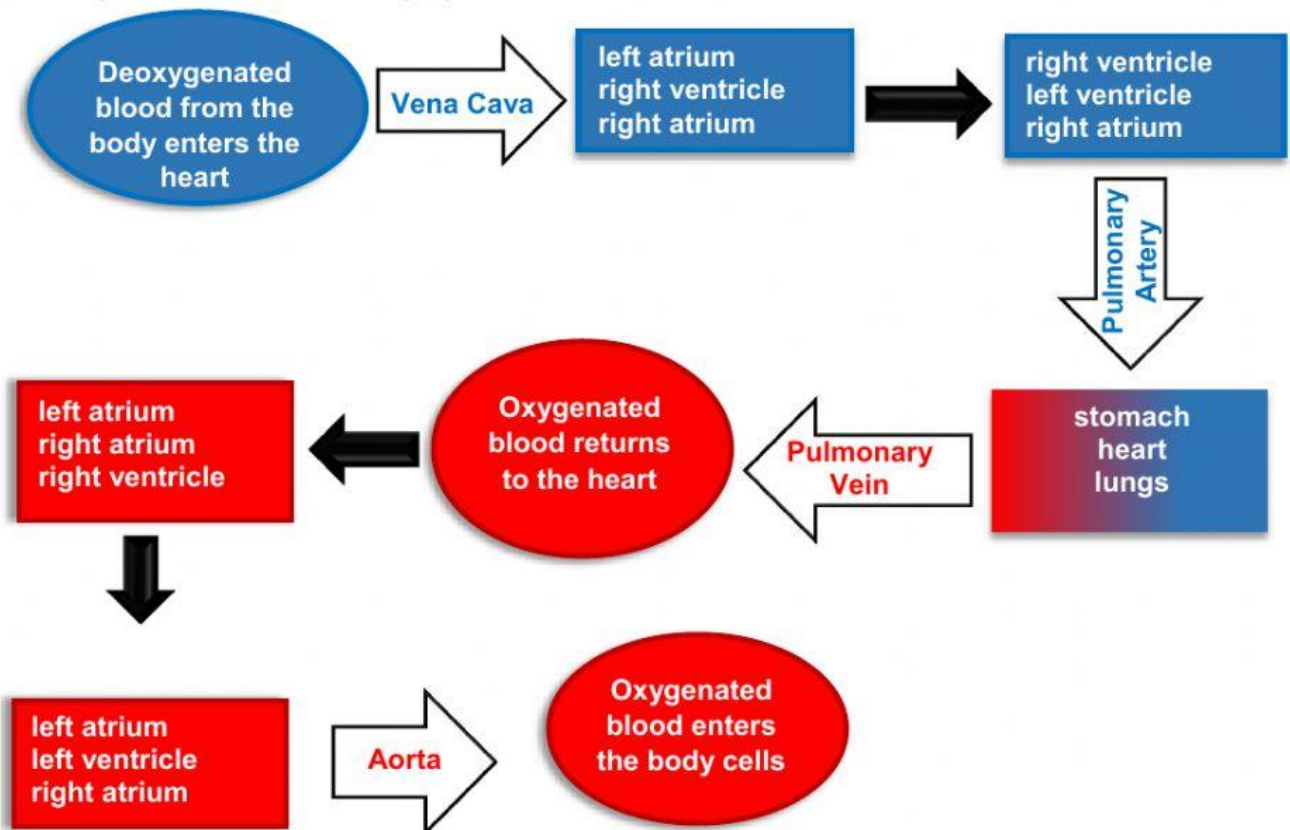


1. Drag and drop the labels provided to their correct position.



SEPTUM	RIGHT ATRIUM	RIGHT VENTRICLE	LEFT ATRIUM	LEFT VENTRICLE
SEMI-LUNAR VALVE	AORTA	VENA CAVA	TRICUSPID VALVE	BICUSPID VALVE

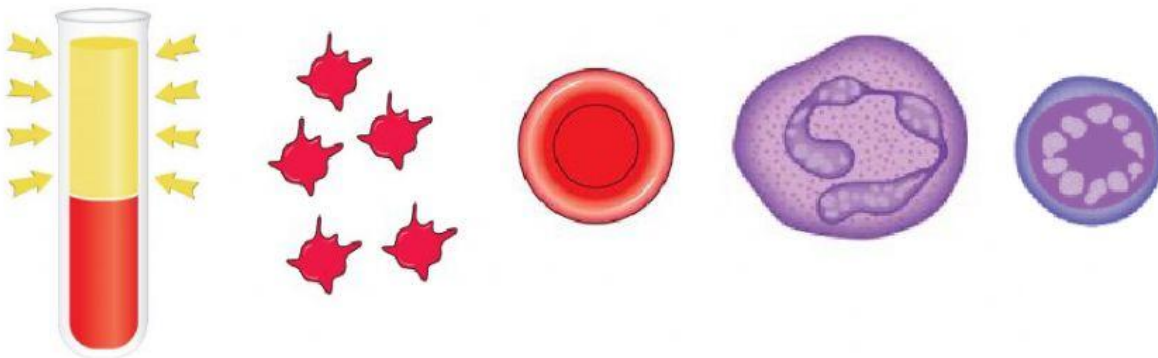
2. Choose from the drop down menu to complete the flow diagram to trace the flow of blood through the Human Circulatory System.



3. Type your answers in the table to compare the arteries capillaries and veins.

	ARTERIES	VEINS	CAPILLARIES
Function			
Wall			
Lumen			
Valve			

4. Draw a line to match the blood components to their correct labels.



LYMPHOCYTE

PLASMA

RED BLOOD CELL

PHAGOCYTE

PLATELETS