

Name: \_\_\_\_\_ 6th grade / Group: \_\_\_\_\_ Period 2

School: \_\_\_\_\_ CCT: \_\_\_\_\_

**I. Listen carefully and select the correct word.**



VS



Good evening people!

Today we are at the BBVA Stadium to watch this soccer match between Santos and Rayados! It's a **1.- sunny/rainy** day.

There are many people waiting to watch their favorite team win! This is so exciting! Being **2.- 9 o'clock/ 3 o'clock**, this match starts, go go go! The soccer players jump on the field, Rayados' wearing their blue and white uniforms. Both teams **3.- walk/run** a lot on the field, Rayados scores a goooooo! Impressive! The game is over and Rayados scored a new victory, **4.- What do you think about the game? /How do you feel about the game?** It was **5.- a boring/ an exciting** match. Have a good night and don't forget to tune channel 127 again for more.

**II. Look at the picture and answer the questions below. Choose the correct answer from the dropdown menu.**



Cinderella's sisters are invited to the ball but she is not.



Cinderella meets her fairy godmother and is transformed for the first time. She leaves the ball before the magic wears off.



The second night of the ball, Cinderella is transformed again and makes it back just in time.

6- What's the title of the fantasy story?

7- What are the magical objects?

8- Who's the main character of the story?

9- Who are the supporting characters?

10- What's the setting of the story?

---



---




---



---

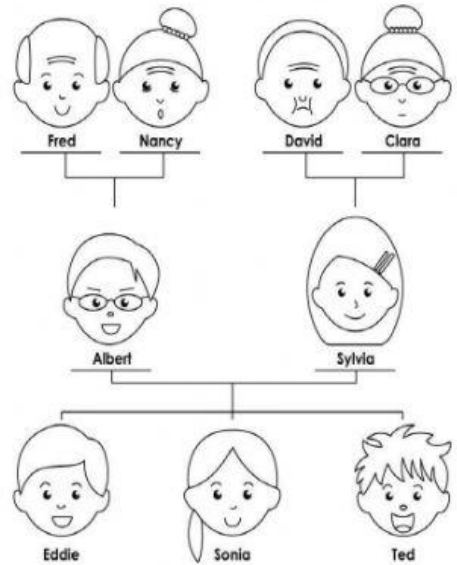


---

III. Look at the family tree and use the word bank to answer the questions about family relationships. Drag and drop it. 

brother
mother
grandfather
husband
daughter

11. What is the relationship between David and Sonia?  
David is Sonia's Here \_\_\_\_\_.
12. What is the relationship between Eddie and Ted?  
Eddie is Ted's Here \_\_\_\_\_.
13. What is the relationship between Nancy and Albert?  
Nancy is Albert's Here \_\_\_\_\_.
14. What is the relationship between Sonia and Sylvia?  
Sonia is Sylvia's Here \_\_\_\_\_.
15. What is the relationship between Fred and Nancy?  
Fred is Nancy's Here \_\_\_\_\_.



IV. Look at the warning signs and read the sentences describing the consequences if you disobey the signs. The match the sentence with its image

- 16.- If you climb, you will fall. •
- 17.- If you enter, you will be sanctioned •
- 18.- If you touch that, you will be injured. •
- 19.- If you inhale, you will be intoxicated. •
- 20.- If you smoke, you will provoke a fire. •

