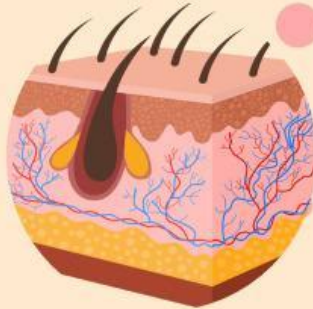
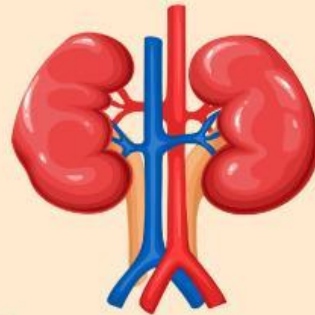


# WORKSHEET

## EXCRETORY SYSTEM



**GROUP:**

**CLASS:**



# WORKSHEET

## EXCRETORY SYSTEM

### A. DEFINITION OF EXCRETORY SYSTEM

Excretory system is a vital organ system for \_\_\_\_\_ waste product and maintaining \_\_\_\_\_ It consists of \_\_\_\_\_ organs. There are:

1. \_\_\_\_\_
2. \_\_\_\_\_
3. \_\_\_\_\_
4. \_\_\_\_\_

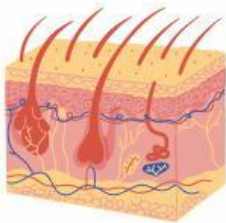


# WORKSHEET

## EXCRETORY SYSTEM

### B. THE ORGANS AND ITS FUNCTION

Join the excretory organ and its function by draw a line.



Excrete carbon dioxide



Produce urine



Excrete sweat



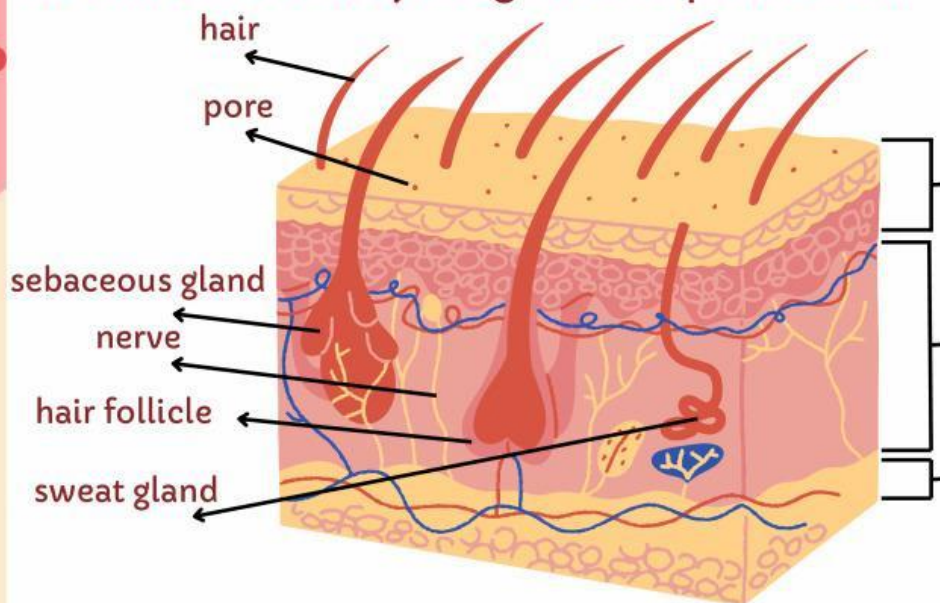
Produce bile

# WORKSHEET

## EXCRETORY SYSTEM

### 1. SKIN STRUCTURE

Skin is the largest organ of human body. Understand the skin structure by drag and drop the label.



Epidermis

Dermis

Hypodermis

1. The outermost layer of skin is \_\_\_\_\_. It contains \_\_\_\_\_.
2. The middle layer of skin is \_\_\_\_\_. It contains \_\_\_\_\_.
3. The deepest layer of skin is \_\_\_\_\_. It contains \_\_\_\_\_.



# WORKSHEET

## EXCRETORY SYSTEM

### 2. SKIN AS EXCRETORY ORGAN

As the excretory organ, the skins have important function, please see the video in slide 11 and rearrange the process of thermoregulation (sweating process).

We will be sweating when we eat spicy food, sick, excercises or do some activities. It will help us to maintain the body temperature that is called \_\_\_\_\_.

The process of thermoregulation are:

First, You do an excercise or eat some spicy food.

Finally, the body temperature cool down a bit.

Fourth, after the nerve get the signal, all sweat gland of body is working and produce sweat.

The sweat is water that contains sodium and chloride.  
Then, sweat absorp the heat and evaporate.

After the brain catch the information, the brain directs the nervous system to send signal to the sweat gland.

Second, the body temperature increase (get hot), then tell the brain.