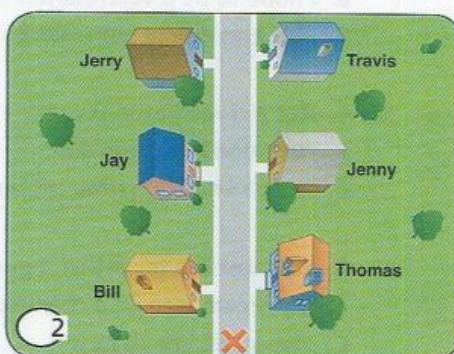
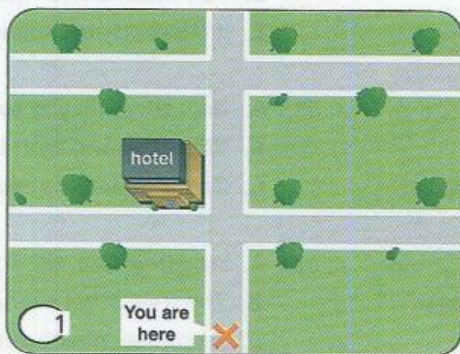


CD 4-17 **Part 1**

Look at the pictures. For each picture you will hear a question and three statements. Choose the statement that best matches the picture.

ANSWER SHEET

- 1 (A) (B) (C)
- 2 (A) (B) (C)
- 3 (A) (B) (C)
- 4 (A) (B) (C)
- 5 (A) (B) (C)
- 6 (A) (B) (C)
- 7 (A) (B) (C)
- 8 (A) (B) (C)
- 9 (A) (B) (C)
- 10 (A) (B) (C)
- 11 (A) (B) (C)
- 12 (A) (B) (C)
- 13 (A) (B) (C)
- 14 (A) (B) (C)
- 15 (A) (B) (C)



CD 4-18))) **Part 2**

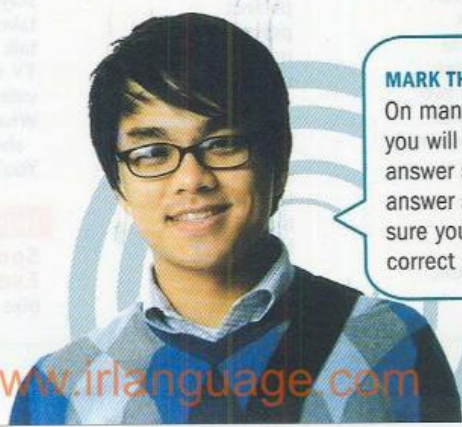
Listen to the conversations. Choose the correct response. Use your answer sheet.

- 7. A. No, then turn right.
B. That's correct.
C. Yes, next to the post office.
- 8. A. Oh, it's no problem.
B. It's my favorite restaurant.
C. It's just around the corner.
- 9. A. He's really outgoing.
B. I don't think he likes it.
C. Yes, I like him a lot.
- 10. A. No, I don't like anything about it.
B. Well, it can be crowded and noisy.
C. Yes, that's not so good.
- 11. A. It's a bit too humid in the summer.
B. You can climb it if you like.
C. There are lots of great shops.
- 12. A. No, it doesn't seem to work.
B. I run to the office every day.
C. Yes, I've had a lot of stress at work.

CD 4-19))) **Part 3**

Listen to the following short conversations and answer the questions below. Use your answer sheet.

- 13. What is the woman looking for?
A. the post office
B. the church
C. the museum
- 14. What is Arnold Smithson like?
A. He's funny and talkative.
B. He's quiet and studious.
C. He's kind and considerate.
- 15. What does the man say about Los Angeles?
A. It is a good city for driving.
B. It's not boring.
C. It's very unsafe.



MARK THE TEST CAREFULLY

On many tests, such as the TOEIC® test, you will mark your answers on a paper answer sheet. When you mark your answer sheet, take your time and make sure you mark your answers in the correct spaces.