

Relative pronouns **who** and **which**



We use relative pronouns to connect two facts.

There is the boy. He made the smoothie.

*There is the boy **who** made the smoothie.*

We use **who** when we are talking about people. In the sentence above, **who** replaces **he**.

We use **which** when we are talking about animals or things. In the sentence below, **which** replaces **it**.

This is the drink. It is very popular here.

*This is the drink **which** is very popular here.*

4 Circle the correct answer.

- 1 the milk which / who you poured
- 2 the girl **which** / who we like
- 3 the boy **which** / who is deaf
- 4 the pan **which** / who she used
- 5 the danger **which** / who the girls didn't know about
- 6 the person **which** / who logged on before me
- 7 the photos **which** / who I attached
- 8 the crisps **which** / who Harry bought
- 9 the horses **which** / who ran into the field
- 10 the money **which** / who we haven't got

5 Write sentences. Use relative pronouns.



There's the dog which is dangerous.



She's the girl _____ saw a hurricane.



That's the photo _____ Dad took.



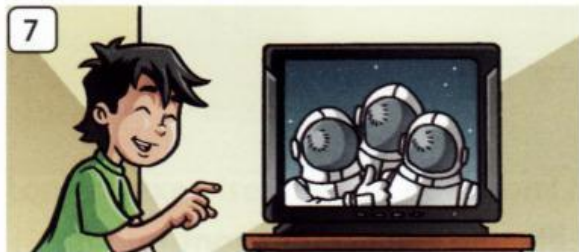
Here's the statue _____ broke.



That's the smoothie _____ Carrie made.



Here's the information _____ we need.



Those are the astronauts _____ are going to the moon.



Look. There's the boy _____ won all the trophies.



Where's the food _____ I asked you to buy?



Camels are animals _____ don't drink much water.