

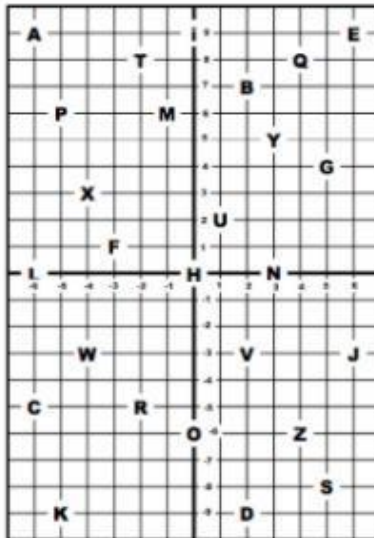
1. Which quadrant contains the point named by (2, 5)?

- a) Quadrant III
- b) Quadrant II
- c) Quadrant I
- d) Quadrant IV

2. In which quadrant is the following point?
(-3, 12)

- a) Quadrant I
- b) Quadrant IV
- c) Quadrant II
- d) Quadrant III

3.



Which letter matches the coordinate (4, -6)?

- a) Z
- b) G
- c) K
- d) None of the above

- a) Z b) G
c) K d) None of the above

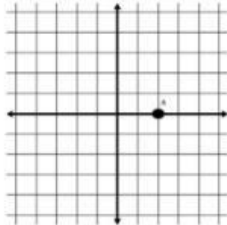
4. The coordinate plane is divided by a horizontal number line called what?

- a) x-axis b) origin
c) quadrant d) y-axis

5. The coordinates for the origin in the coordinate plane are _____?

- a) (1,1)
- b) (0,0)
- c) (0,1)
- d) (1,0)

6.



What is the ordered pair for point A?

- a) $(0, 2)$
c) $(-2, 0)$

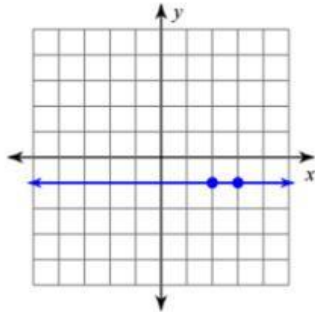
7. The vertical number line in the coordinate plane is called what?

- a) y-axis
- b) x-axis
- c) quadrant
- d) origin

8. How do you write an ordered pair?

- a) (Y,X)
- b) (Y,Y)
- c) (X,X)
- d) (X,Y)

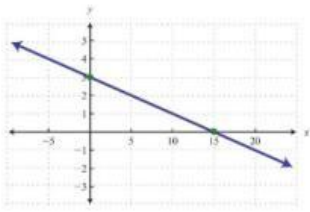
9.



Find the slope of the line.

- a) Undefined
- b) 1
- c) 0
- d) -1

10.



What type of slope does the following graph have?

- a) Zero Slope
- b) Undefined
- c) Negative
- d) Postive

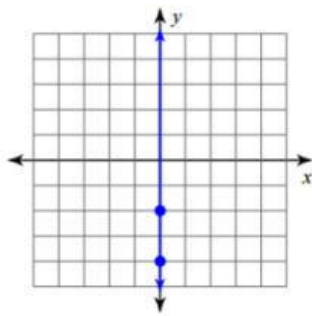
11.



What is the slope in the picture?

- a) Positive
- b) Zero
- c) Negative
- d) Undefined

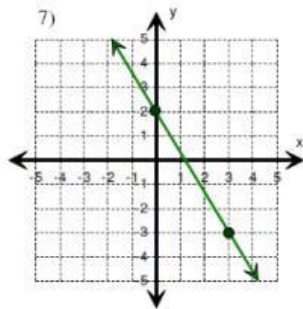
12.



Find the slope of the line.

- a) -1 b) 0
c) Undefined d) 1

13.



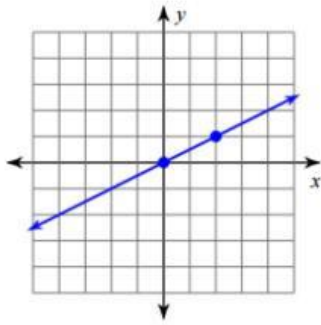
Find the slope

Find the slope

- a) $-3/5$
- c) $-5/3$

- b) $5/3$
- d) $3/5$

14.



Find the slope of the line.

- a) -2
- c) 2

- b) $-1/2$
- d) $1/2$

15. In which quadrant is the point $(-5, -7)$?

- a) Quadrant I
- c) Quadrant IV

- b) Quadrant III
- d) Quadrant II