

Practice 6  
Functions P.1



Level: 1

1. Consider the following set of ordered pairs:  $\{(-1,2), (-2,-4), (3,-6), (4,-8), (-1,4)\}$   
Is this a function?
2. Consider the following set of ordered pairs:  $\{(1,3), (2,4), (-1,5), (3,6), (6,3)\}$   
Is this a function?

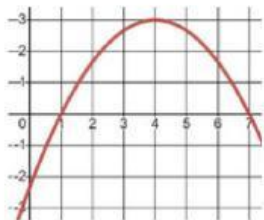
☒ A Yes

☐ B No

☒ A Yes

☐ B No

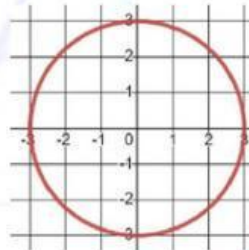
Determine if the following graphs represent functions.



☒ A Yes

☐ B No

4. Determine if the following graphs represent functions.



☐ A Yes

☒ B No

5. Find the slope of the line that contains  $(1, -8)$ ,  $(-6, -1)$

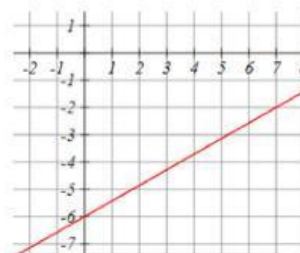
☒ A -1

☐ C 1

☐ B -3

☐ D 2

6. Use the graph to find the slope.



☐ A -4/7

☐ B -3/7

☐ C 4/7

☒ D 5/7

7. Write the equation of the line with the slope 2 and y-intercept -4

☐ A  $y = -2x + 4$

☐ B  $y = 2x - 4$

☐ C  $y = 4x + 2$

☒ D  $y = 4x - 2$

8. Write the equation of the line with the slope 3 and containing  $(-3, -4)$  in standard form

☐ A  $y - 3x = 5$

☐ B  $y + 3x = 5$

☐ C  $y + 3x = -5$

☐ D  $y + x = 5$