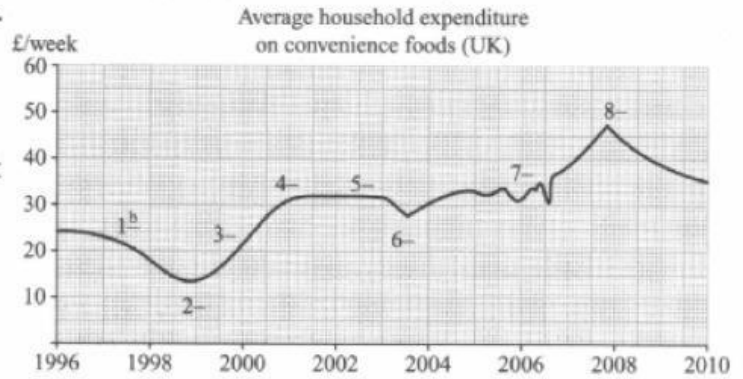


- 2 The verbs a–h can all be used to describe line graphs. Match each expression with the part of the graph it best describes.

- a rise (rose, risen)
- b fall (fell, fallen)
- c peak (-ed, -ed)
- d reach (-ed, -ed) its lowest point
- e level (-led, -led) off
- f dip (-ped, -ped)
- g remain (-ed, -ed) the same
- h fluctuate (-d, -d)



- 3 *There be + noun (+ in)* can also be used to describe trends.

Example: *There was a rise in fast food consumption.*

Write the noun form of the verbs 1–7.

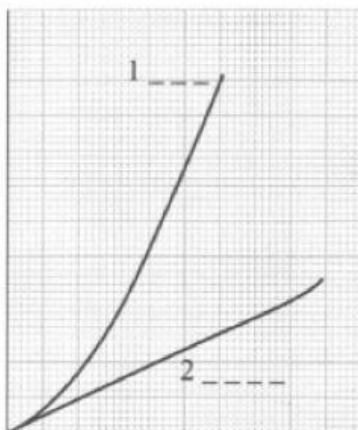
Example: *rose*      *rise*

- |             |              |
|-------------|--------------|
| 1 increased | 5 fell       |
| 2 peaked    | 6 dropped    |
| 3 decreased | 7 fluctuated |
| 4 dipped    |              |

- 4 The adjectives a–g can be used to describe the degree of change represented in a line graph. Adjectives are placed before the noun.

Example: *There was a sharp rise in fast food consumption.*

Match each adjective with the line that it best describes.



- a gradual
- b moderate
- c modest
- d sharp
- e dramatic
- f slight
- g steep

5

Adverbs can also be used to describe the degree of change. Adverbs come after the verb.

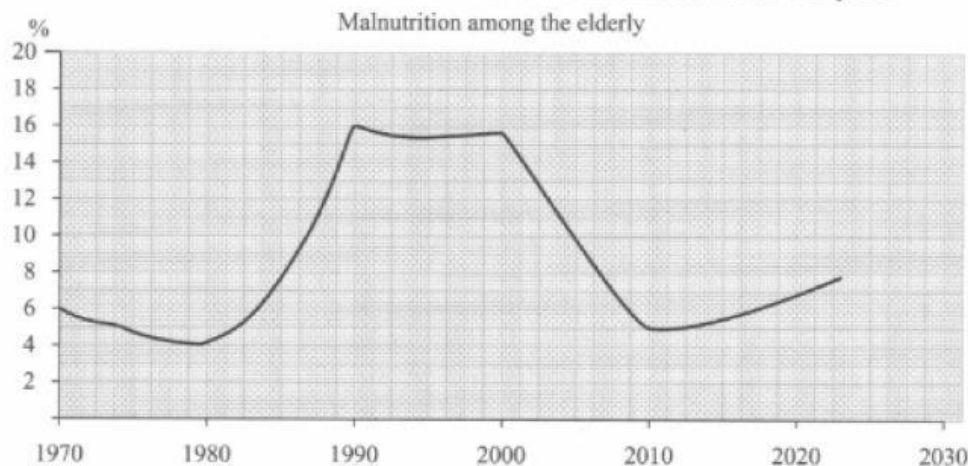
Example: *Fast food consumption rose sharply.*

The sentences 1–5 on the left describe trends using *there be* + adjective + noun. Complete the sentences on the right using the corresponding verb + adverb.

Example: <i>There was a steep increase in sales of convenience food.</i>	<i>Sales of convenience food increased steeply.</i>
1 There was a dramatic decrease in the use of dietary supplements.	The use of dietary supplements _____.
2 There was a modest dip in levels of obesity.	Levels of obesity _____.
3 There was a slight fall in the production of genetically modified food.	The production of genetically modified food _____.
4 There was a significant drop in levels of malnutrition.	Levels of malnutrition _____.
5 There was moderate fluctuation in the availability of seasonal produce.	The availability of seasonal produce _____.

2

Complete the passage below using verbs, adverbs, adjectives and nouns. Make sure you use the correct verb tenses. The first one has been done for you.



The percentage of malnourished elderly people in the EU fell gradually between 1970 and 1978. Over the following seven years, it (1) \_\_\_\_\_ (2) \_\_\_\_\_, until 1990, when it (3) \_\_\_\_\_ at 16 per cent. After falling slightly, the rate of malnutrition (4) \_\_\_\_\_ for a decade. Since 2000, there (5) \_\_\_\_\_ a (6) \_\_\_\_\_ fall. Over the next ten years, it is (7) \_\_\_\_\_ to (8) \_\_\_\_\_ (9) \_\_\_\_\_.