

## Quiz : Chapter 7

### Introduction To Animals

Q1. What characteristics is common to all invertebrates?

- a) backbone b) cell walls c) mantle d) no backbone

Q2. The tissue involved in making shells of all mollusks is called the .....

- a) mantle b) cuticle c) thorax d) nematocysts



Q3. What is a characteristic all chordates have in common?

- a) amnion b) notochord c) mammary gland d) paired fins

Q4. Animals that heat their body from heat in their environment is called .....

- a) ectotherm b) vertebrate c) endotherm d) invertebrate

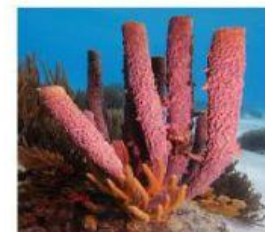
Q5. In which group would you place the animal below?



- a) arthropods b) echinoderms c) flat worms d) sponges

Q6. Sponges are the simplest animals that live on rocks, they belong to phylum .....

- a) Nematoda b) Echinodermata c) porifera d) Mollusca



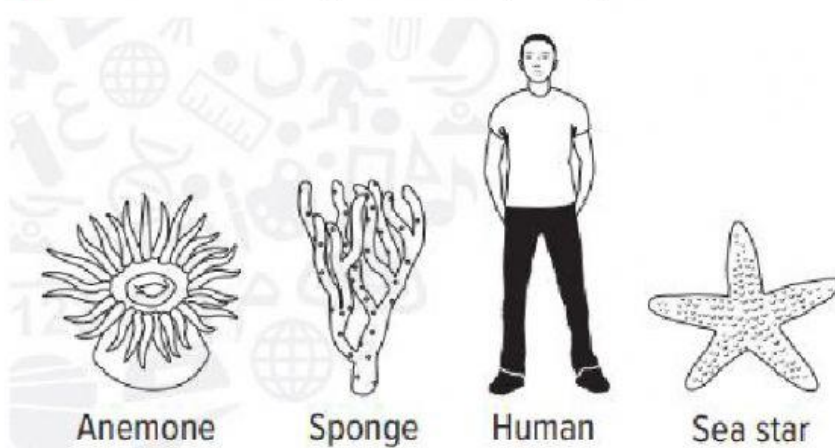
Q7. The table below shows the mass and the volume of several sample leg bones. Use the table to answer question

Animal	Mass (g)	Volume (cm <sup>3</sup> )
Giraffe	76.8	40
Human	46.25	25

The density of Human bone is .....

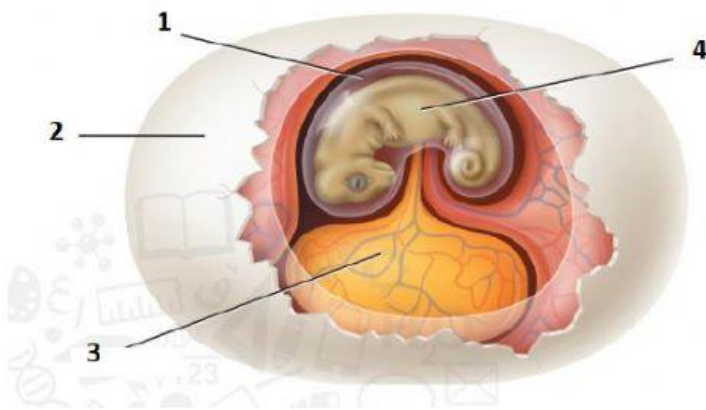
- (a) 1.92 g/cm<sup>3</sup> (b) 3.07 g/cm<sup>3</sup> (c) 1.85 g/cm<sup>3</sup> (d) 1.15 g/cm<sup>3</sup>

**Q8.** Which animal is an example of bilateral symmetry



- a) anemone      b) human      c) sea star      d) sponge

**Q9.** Reptiles, Birds and Mammals have amniotic egg that protects embryo.



Locate amnion from the figure above

- a) 1      b) 2      c) 3      d) 4

**Q10.** Which characteristics is only found in mammals?

- a) Mammals are endotherms and generate heat
- b) Mammals have lungs for respiration on Land
- c) Mammals produce milk for their young
- d) Mammals use amniotic eggs for reproduction

