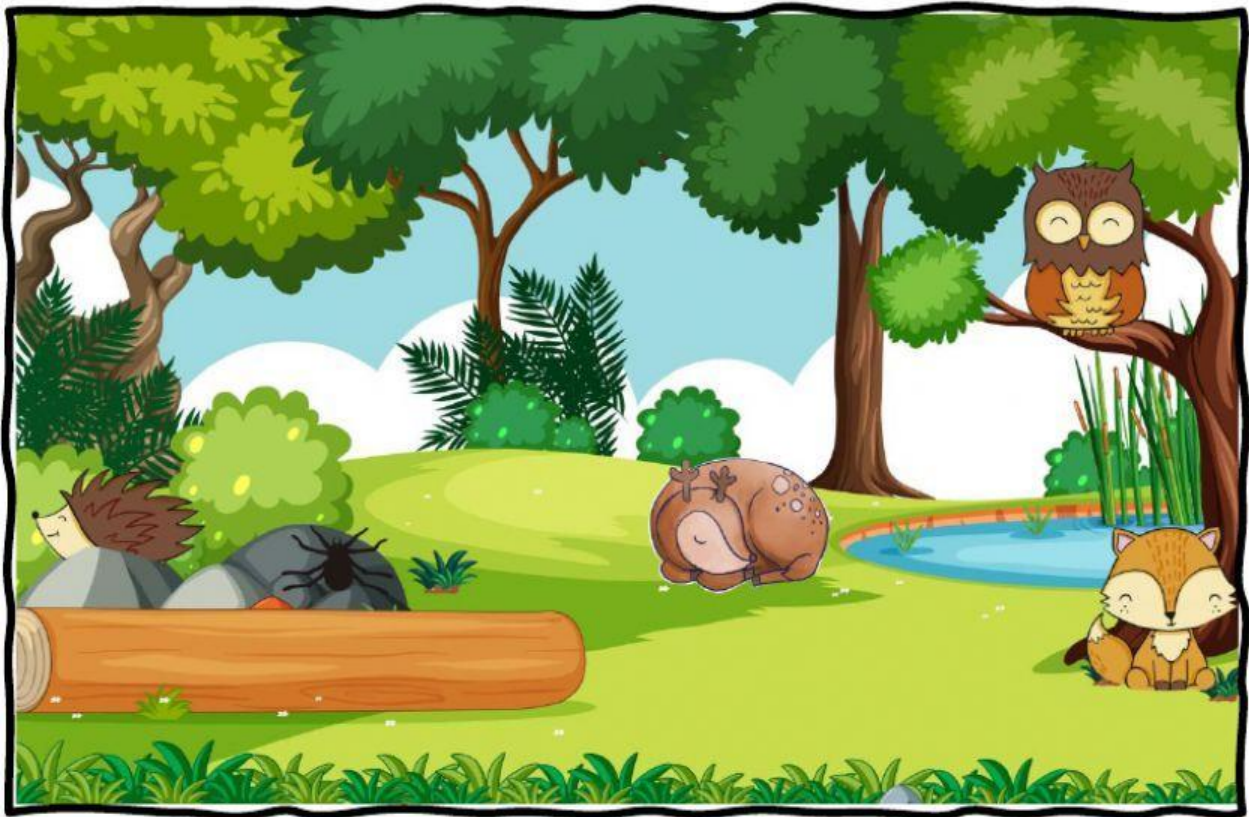


# IN THE COUNTRYSIDE

1.- LOOK, CIRCLE AND WRITE::



IN FRONT OF, NEXT TO, ON, BEHIND

1.- CAN YOU SEE A FOX?

YES, I CAN / NO, I CAN'T. IT'S \_\_\_\_\_ THE TREE.

2.- CAN YOU SEE A HEDGEHOG?

YES, I CAN / NO, I CAN'T. IT'S \_\_\_\_\_ THE ROCK.

3.- CAN YOU SEE AN OWL?

YES, I CAN / NO, I CAN'T. IT'S \_\_\_\_\_ THE TREE.

4.- CAN YOU SEE A MONKEY?

YES, I CAN / NO, I CAN'T. IT'S \_\_\_\_\_ THE ROCK.

5.- CAN YOU SEE A SPIDER?

YES, I CAN / NO, I CAN'T. IT'S \_\_\_\_\_ THE ROCK.

6.- CAN YOU SEE AN ELEPHANT?

YES, I CAN / NO, I CAN'T. IT'S \_\_\_\_\_ THE TREE..

7.- CAN YOU SEE A DEER?

YES, I CAN / NO, I CAN'T. IT'S \_\_\_\_\_ THE LAKE..