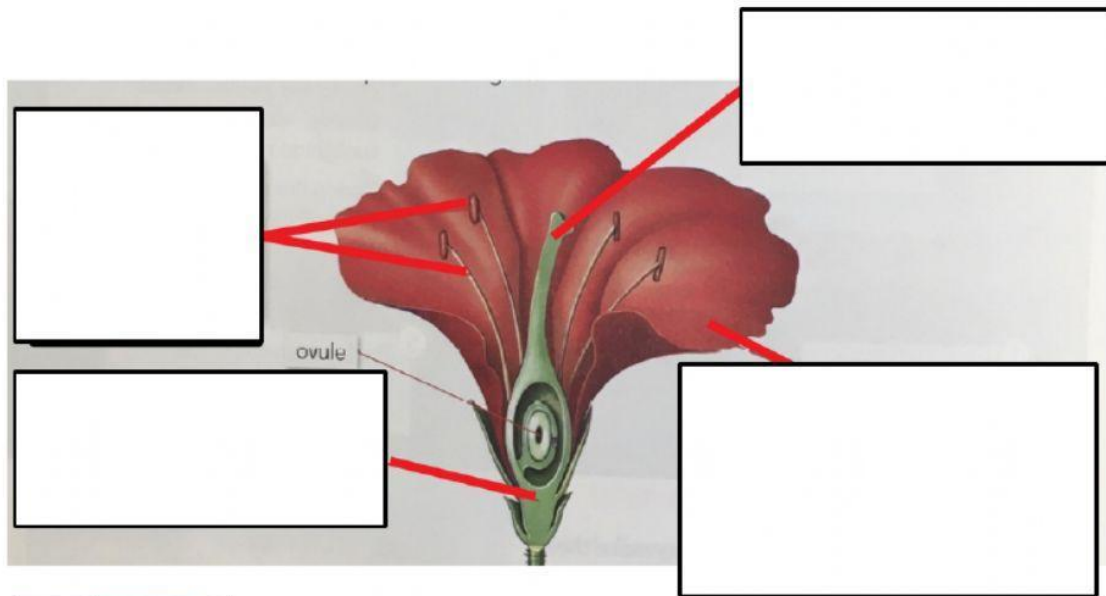


Parts of a flower



It is made up of **little green leaves**, called **sepals**, that **protect the petals**.



It consists of the **petals**. They **attract pollinators** to carry the pollen to other flowers.



It consists of a **filament** and an **anther**. The anther contains the **pollen grains**.



It is a **bottled-shaped organ**. The thicker part is called the **ovary** and inside it, are the **ovules**.