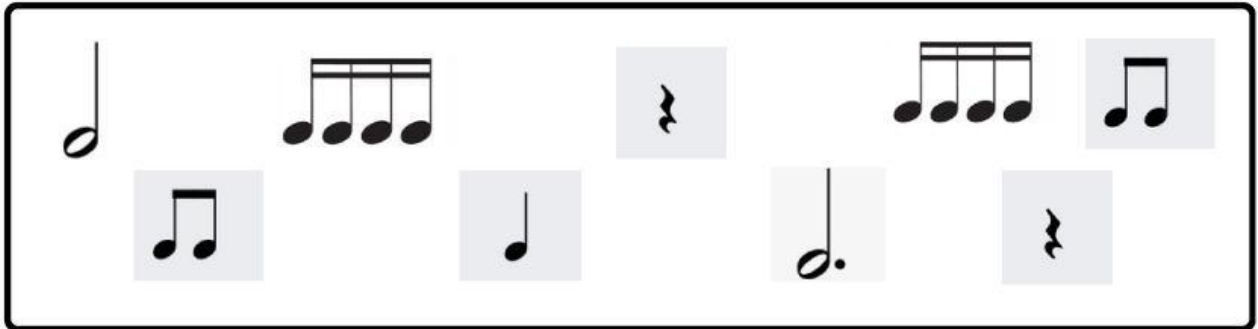


Grade:

Rhythmic Dictation

Listen, drag and drop the notes from the options given:



1. $\frac{4}{4}$
2. $\frac{4}{4}$
3. $\frac{4}{4}$

Melodic Dictation

Match the melody with the sound



9



3

Write the melodic dictation on the web page for free notation. Once you have finished, save the file as a PDF or take a screenshot and upload it to [Classroom](#). If you can not enter the Web page, write it on paper and upload it to [Classroom](#):

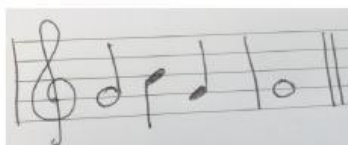
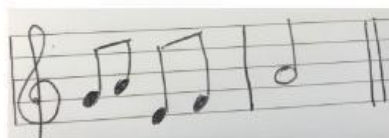
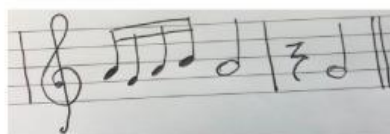
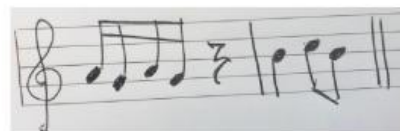
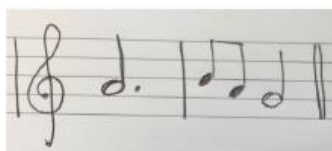
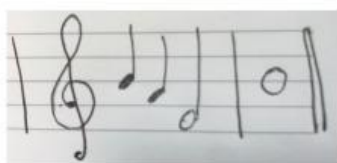
Dictation:

The web page for free notation:

[Click Here](#)

Time Signatures

Drag the musical excerpts into the column with the correct time signature



2/4 time

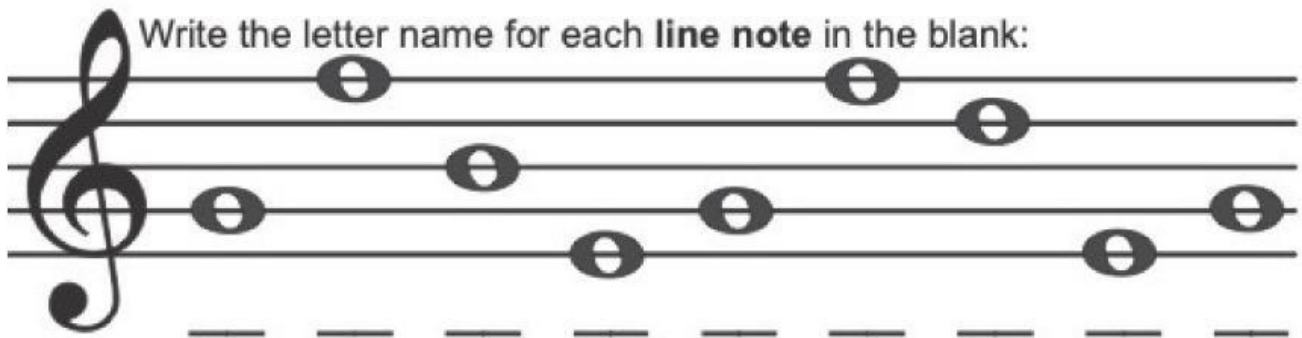
3/4 time

4/4 time

Note Names in the Staff

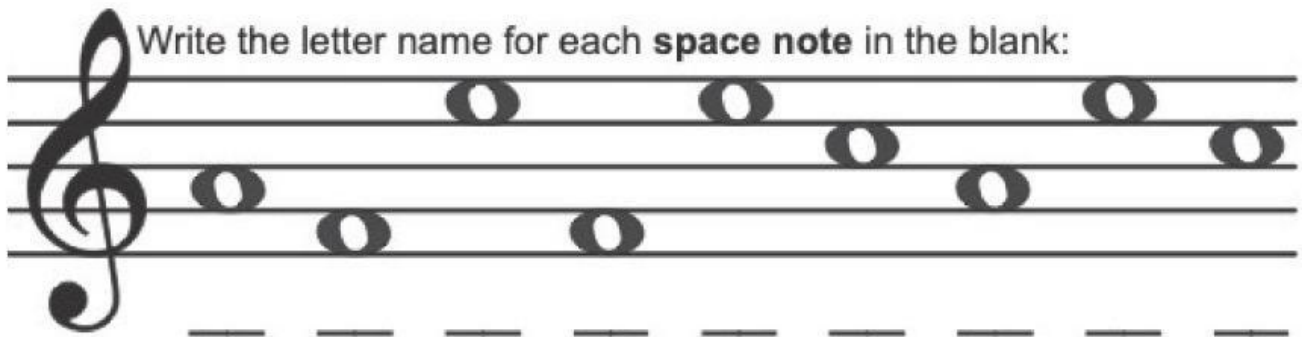
Write the correct name of each note

Write the letter name for each **line note** in the blank:



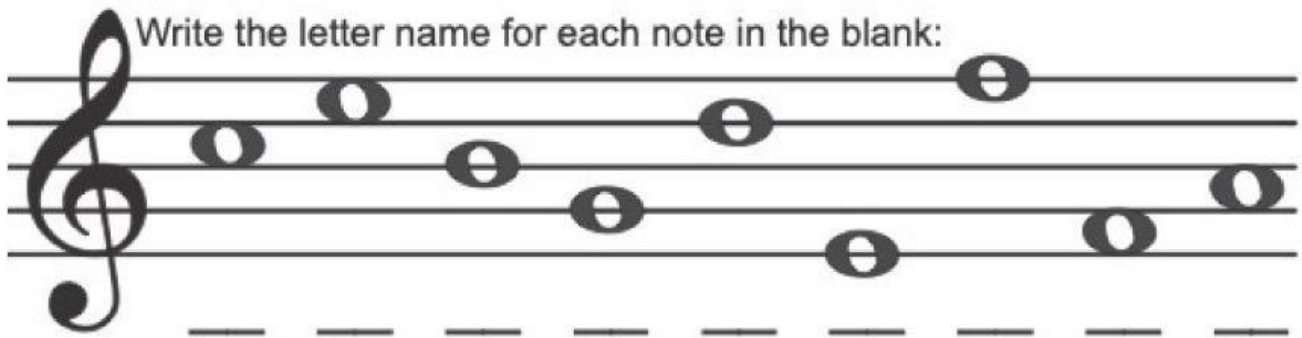
A musical staff with a treble clef. It contains eight half notes on the lines: G4 (first line), A4 (second line), B4 (third line), C5 (fourth line), D5 (fifth line), E5 (first space), F5 (second space), and G5 (third space). Below the staff are eight dashed lines for writing the note names.

Write the letter name for each **space note** in the blank:

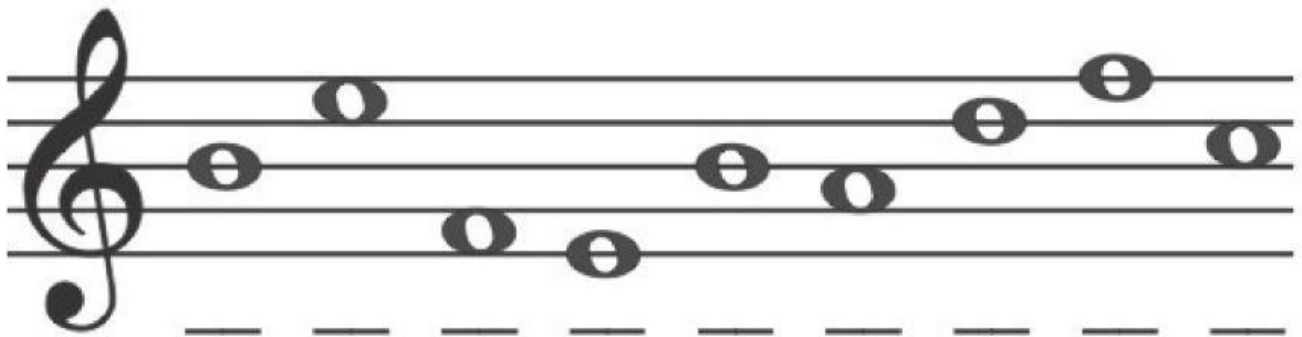


A musical staff with a treble clef. It contains eight half notes in the spaces: F4 (first space), G4 (second space), A4 (third space), B4 (fourth space), C5 (fifth space), D5 (first line), E5 (second line), and F5 (third line). Below the staff are eight dashed lines for writing the note names.

Write the letter name for each note in the blank:




A musical staff with a treble clef. It contains eight half notes: F4 (first space), G4 (second space), A4 (third space), B4 (fourth space), C5 (fifth space), D5 (first line), E5 (second line), and F5 (third line). Below the staff are eight dashed lines for writing the note names.

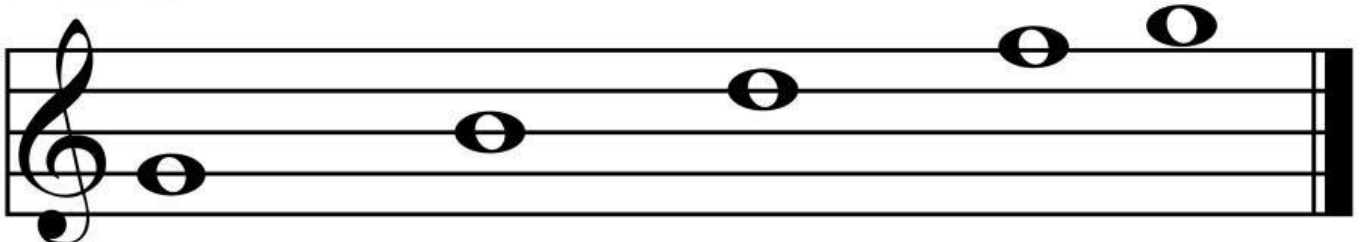


A musical staff with a treble clef. It contains eight half notes: G4 (first line), A4 (second line), B4 (third line), C5 (fourth line), D5 (fifth line), E5 (first space), F5 (second space), and G5 (third space). Below the staff are eight dashed lines for writing the note names.




Scales

Drag the whole notes  to the staff to complete the notes missing on each scale. Write the name of each note:

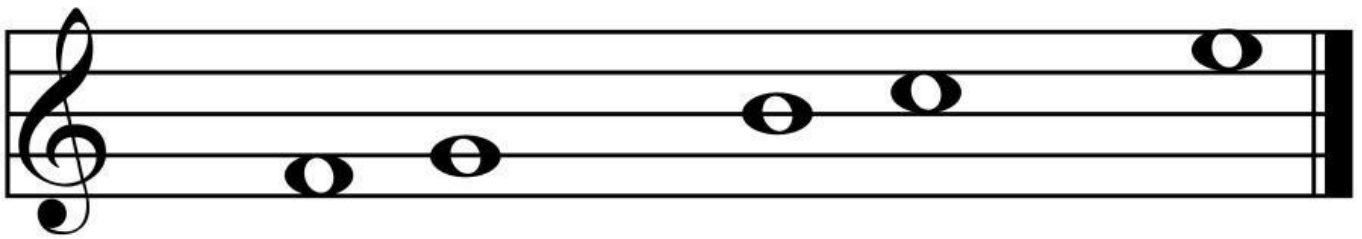
G Scale:






A musical staff in treble clef with a key signature of one sharp (F#). The scale G-A-B-C-D-E-F#-G is partially shown. The notes G, A, B, and C are already placed on the staff. The notes D, E, F#, and G are missing and are provided as whole notes below the staff for dragging.

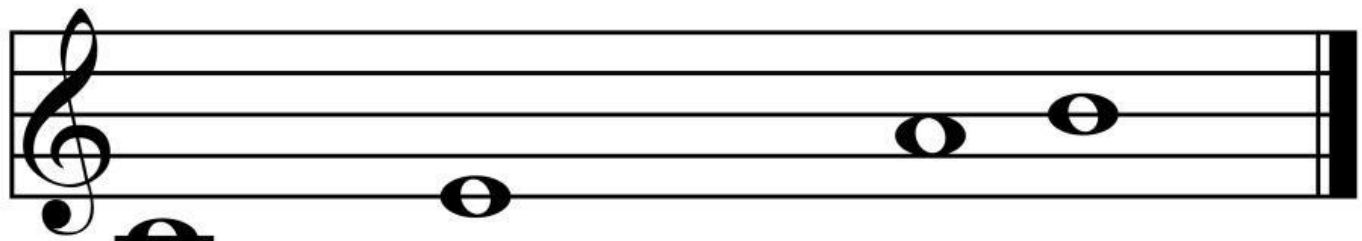
E Scale:



A musical staff in treble clef with a key signature of two sharps (F# and C#). The scale E-F#-G-A-B-C#-D-E is partially shown. The notes E, F#, and G are already placed on the staff. The notes A, B, C#, and D are missing and are provided as whole notes below the staff for dragging.

C Scale:



A musical staff in treble clef with a key signature of no sharps or flats. The scale C-D-E-F-G-A-B-C is partially shown. The notes C, D, and E are already placed on the staff. The notes F, G, A, and B are missing and are provided as whole notes below the staff for dragging.

