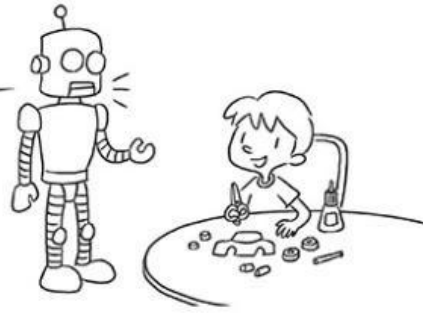


**Modals** should / shouldn't**⚠ WARNING**

- You **should** always read the instructions first.
- You **shouldn't** put the pieces in your mouth.
- You **should** be careful when using glue.
- You **shouldn't** play with scissors.
- You **should** ask an adult to help you.



Use **should** for advice and to say what is normally right or good.

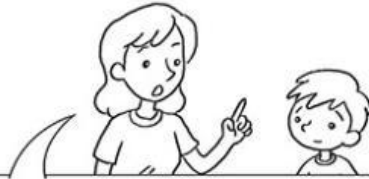
~~feeds~~  
Danny **should** feed the dog. It is hungry!

Do not change the verb after **should**.

**Practice**

**A** Fill in the blanks with 'should' or 'shouldn't' and the verbs given.

wear      eat      arrive      wait      play      speak      go



- 1 You \_\_\_\_\_ tricks on your brother.
- 2 When you're sick, you \_\_\_\_\_ a mask.
- 3 We \_\_\_\_\_ to bed early.
- 4 You \_\_\_\_\_ for your turn in the canteen.
- 5 Judy \_\_\_\_\_ too many potato chips. They're bad for her.
- 6 We \_\_\_\_\_ softly on the train.
- 7 You \_\_\_\_\_ late for school.



Date: \_\_\_\_\_

Practice

**B** Match the sentences. Write the correct letters in the boxes. Fill in the blanks with 'should' or 'should not'. Follow the example.

1 You need to study for your test. d

2 We want to stay healthy.  

3 It is raining heavily.  

4 You are often late for school.  

5 My Maths is very bad.  

a I \_\_\_\_\_ do more sums.

b You \_\_\_\_\_ set an alarm clock.

c We \_\_\_\_\_ do more sports.

d You \_\_\_\_\_ play computer games.

e You \_\_\_\_\_ go hiking.

Grammar  
in  
Context

Complete what Dad says with 'should' or 'shouldn't' and the verbs given.

throw

keep

pick

feed

draw

climb

1

Daniel



2

Candy



3

Winnie



4

Bella



5

Mike



6

Gary



Children! Behave yourselves! Daniel, you 1 \_\_\_\_\_ the tree.

It's very dangerous! Candy, don't litter. You 2 \_\_\_\_\_ your

rubbish in the bin. Winnie, you 3 \_\_\_\_\_ the flowers.

Bella, don't walk on the grass. You 4 \_\_\_\_\_ off the grass.

Oh, Mike! You 5 \_\_\_\_\_ the fish. Stop, Gary! You

6 \_\_\_\_\_ on the bench.