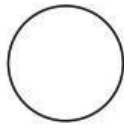


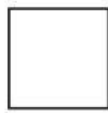
Look at the pictures in each row. Circle the one that does not belong to the row:

1

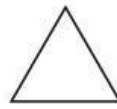
(a)



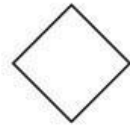
(b)



(c)



(d)



2

(a)



(b)



(c)



(d)



3

(a)



(b)



(c)



(d)



4

(a)



(b)



(c)



(d)



5

(a)



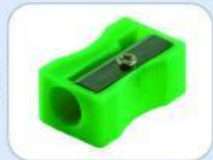
(b)



(c)



(d)



6

(a)



(b)



(c)



(d)



7

(a)



(b)



(c)



(d)

