

## Unit 8. All around the town

### Lesson 4: Page 86

#### I. Vocabulary

|                 |                      |      |                |
|-----------------|----------------------|------|----------------|
| go straight     | /gəʊ/ /streɪt/       | phr  | đi thẳng       |
| turn left       | /tɜ:n/ /left/        | phr  | rẽ trái        |
| turn right      | /tɜ:n/ /raɪt/        | phr  | rẽ phải        |
| from ... to ... | /frɒm/ ... /tu:/ ... | phr  | từ ... đến ... |
| go along        | /gəʊ/ /ə'ləŋ/        | phr  | đi tới         |
| go past         | /gəʊ/ /pɑ:st/        | phr  | đi qua         |
| at the corner   | /ət/ /ðə/ /'kɔ:nə/   | phr  | ở góc đường    |
| opposite        | /'ɒpəzɪt/            | prep | đối diện       |

#### Exercise 1. Look and write.



opposite



**Exercise 2. Classify the words.**

~~hotel~~ go straight

next to turn right

university in front of

go along post office

car park turn left

at the corner baker's

market go past

**PLACES**

hotel

**DIRECTIONS**

**POSITIONS**

**Exercise 3. Choose the correct words.**

1. The baker's is at the corner / opposite.

2. Do / Go straight, then you turn left.

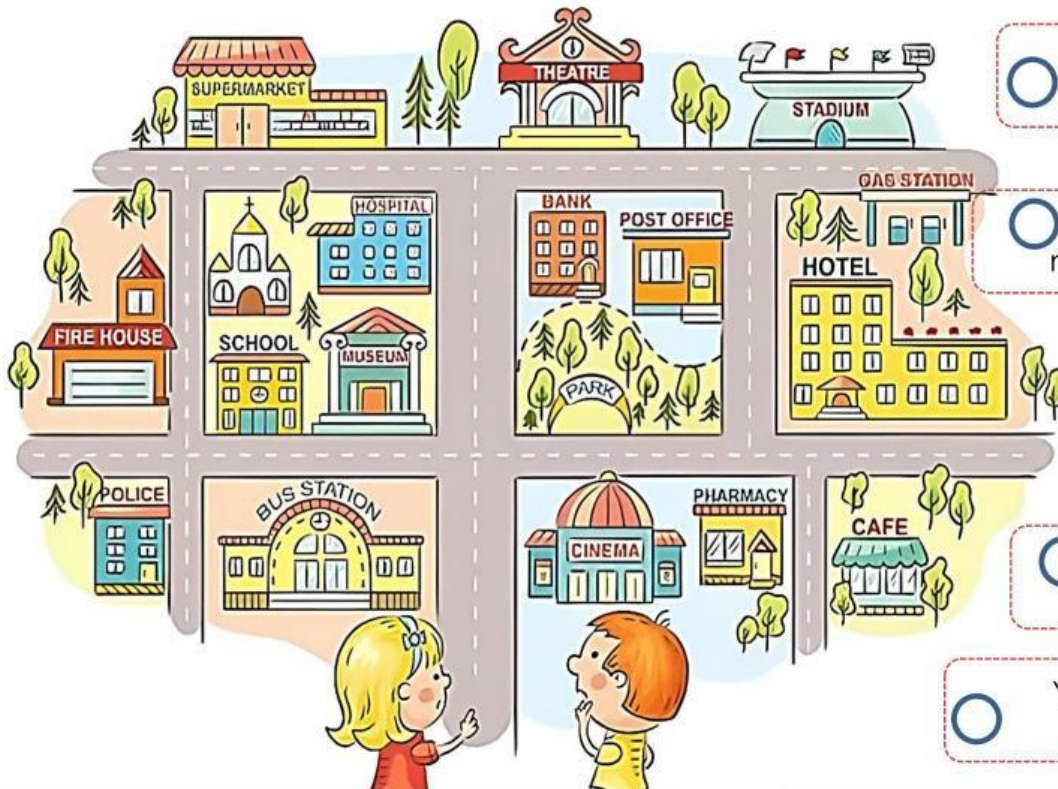
3. Walk / Turn left when you see a roundabout.

4. You have to car park / go past the chemist's.

5. The shop is near / go straight the hospital.

6. The house is next to / turn right the market.

**Exercise 4. Look at the picture, read the sentences, and tick (✓) the correct ones.**



The school is next to the museum.



The bus station is near the supermarket.



The cinema is opposite the park.



You can see the hotel near the gas station.



You have to go past the bank, then you can see a police station on your right.



Go straight, then you can see a hospital on your left.



## II. Grammar: Questions to ask about directions

How do I get to + place?

How do I get from + place 1 + to + place 2?

How do I get to **the chemist's**?

Go straight, then turn left.

How do I get from **the bus station** to **the university**?

Turn right at the end of the road, you can see it.

### Exercise 1. Choose the correct word.

- How **do** / play / go I get to the library?
- How do I get **from** / to / with the airport to here?
- Go **front** / turn / along this way, then you can see a hospital on your left.



- Turn left when you **see** / go / run a roundabout.
- How do I get from the butcher's **go** / to / do the bank?
- Turn **opposite** / next to / right at the end of the road and my house is number 67.

### Exercise 2. Choose the correct word from the box to complete the sentence.

Turn

get

go

straight

How

do

next

How

- How do I get to the police station?
- How do I \_\_\_\_\_ from the market to the train station?
- The library is \_\_\_\_\_ to the cinema.
- Go \_\_\_\_\_ on, the bank is on your left.
- Turn right, then you \_\_\_\_\_ along the road.
- \_\_\_\_\_ do I get to the police station?
- How \_\_\_\_\_ I get to the car park?
- \_\_\_\_\_ right after you pass the baker's.

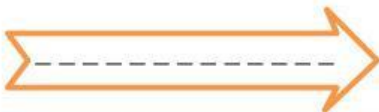
**Exercise 3. Write the question to ask directions about the places.**

1. bank - post office How do I get from the bank to the post office?
2. baker's - hotel \_\_\_\_\_
3. museum \_\_\_\_\_
4. airport \_\_\_\_\_
5. university - market \_\_\_\_\_

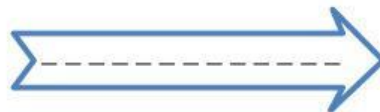
**Exercise 4. Read the text and write the suitable place.**



1. Go straight on Front Street. Turn left at Ash Avenue. Go past the school and turn left at Market Street. It's on your right, near the bus stop.



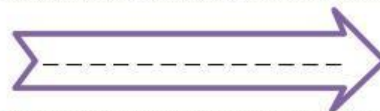
2. Go straight two blocks on Front Street. Turn left at Beech Street. Turn right at Market Street. It's on your left, next to the chemist's.



3. Go straight two blocks on Front Street. Turn left at Beech Street. It's on your right, opposite the park.



4. Go straight at Front Street. Cross Ash Avenue. Its entrance is on your left, at the corner of the street.



5. Go straight at Front Street. Turn left at Ash Avenue. Turn right at Market Street. It's on your left, between the museum and the hospital.



6. Go straight at Front Street. Turn left at Ash Avenue. It's on your right, opposite the school.

