

Words

A Circle the odd one out.

- | | | | |
|---------------------|-----------------|----------|------------------|
| 1 stationery store: | paper | diary | carton |
| 2 recycling plant: | land | machine | paper |
| 3 shelf: | landfill | museum | stationery store |
| 4 rescue: | people | trash | animals |
| 5 recycle: | paper | landfill | carton |
| 6 place: | recycling plant | museum | trash |

B Write words from **A** under the correct picture.

1

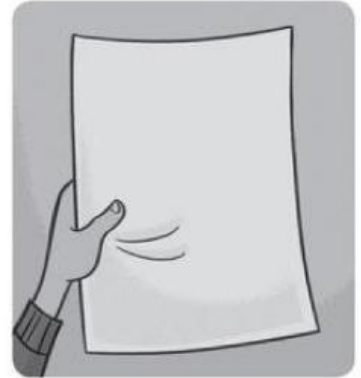


carton

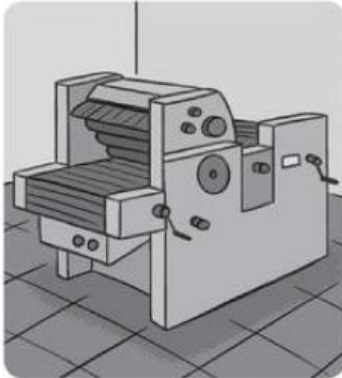
2



3



4



5



6



C Circle *True* or *False*.

- | | | |
|---|-------------|--------------|
| 1 A recycling plant makes new things from old things. | True | False |
| 2 Machines help people make things. | True | False |
| 3 Sunlight can blow a kite into a tree. | True | False |
| 4 People who rescue animals are very fierce. | True | False |
| 5 A carton is a container and often has juice in it. | True | False |
| 6 We write on paper. We can buy paper in many colors. | True | False |

D Read and write the words. Find the mystery word and answer the question.



- This place sells paper and pencils.
s t a t i o n e r y s t o r e
- This place helps us reuse paper, glass, and plastic things.
_ _ _ _ _
- We write things on this.
_ _ _ _ _
- We put things like books on this.
_ _ _ _ _
- We can see this in a factory. It can be noisy.
_ _ _ _ _

What is something you should never throw on the ground? _____

A Read the story quickly. Answer the question.

The people near Turtle are doing something they shouldn't do. What is it?

Turtle's Diary



June 15

Dear Diary,

I'm swimming in the lake. There are some fish below me and above me. My turtle friends are sitting on stones in the sun. There are people having a picnic near the lake. Oh, no, they're littering!

June 16

Dear Diary,

I'm in the lake again today. What's that I see below me? Fish? No. I see cartons and plastic bags. It's trash from the picnic! Oh, no! A plastic bag is around my leg. It's hard to swim, so I climb up on a rock.

June 17

Dear Diary,

This plastic bag is still on my leg. I'm sad because I can't go in the water. Look! It's a man in a boat. He rescues me. Please don't litter! It's bad for all living things.

Think

Where is the turtle?

Comprehension

A What part of the story do you like? Check (✓).

The turtles ☐ The plastic bag ☐ The man in the boat ☐

B Circle the correct setting of the story.

1 the ocean 2 a pond 3 a lake

C Circle the correct answers.

1 Turtle is swimming. He's _____.

a fierce b tired c happy

2 There are some _____ in the water.

a birds b fish c stones

3 There are turtles on _____.

a the water b the sun c stones

4 Turtle sees people throwing trash on the ground. He's _____.

a calm b angry c hungry

5 Trash from the picnic goes into _____.

a the stones b the water c the picnic

6 A _____ is around Turtle's leg.

a carton b plastic bag c plastic bottle

7 Turtle is on the rock. He _____ in the water.

a wants to go b doesn't want to go c goes

8 Turtle says littering is bad for _____.

a people b animals c people, animals, and plants

Grammar in Use



A Study the grammar.

Learn Prepositions of Place

Is / Was	there	a carton	behind the trash can?
Are / Were		cartons	

Yes,	there	is / was.
		are / were.
No,		isn't / wasn't.
		aren't / weren't.

Where	is / was	the carton?
	are / were	the cartons?

It	is / was	behind the trash can.
They	are / were	

B Circle the correct words.

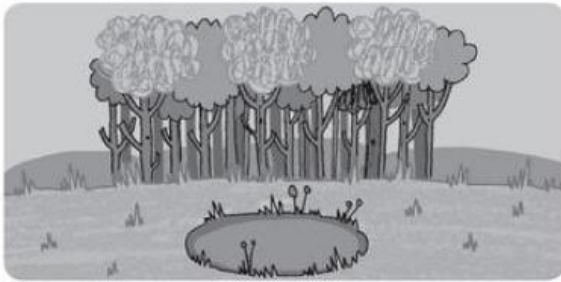
- 1 Is / **Are** there a statue in the park? **Yes** / No, there isn't / **aren't**.
- 2 **Were** / **Where** are the trash cans? **It's** / **They're** across from the trees.
- 3 Where **is** / **are** the boys? **It's** / **They're** in front of the school.
- 4 **Is** / **Are** there smoke above the car? **Yes** / **No**, there **isn't** / **aren't**.
- 5 **Was** / **Were** there a store behind the school? **Yes** / **No**, there **was** / **were**.

C Answer the questions.

- 1 Was there a lake behind the trees? ✓ Yes, there was.
- 2 Are there children in the playground? ✗ _____
- 3 Is there smoke above the recycle plant? ✗ _____
- 4 Were there plants in front of the school? ✓ _____
- 5 Were there many swimmers in the pool? ✓ _____
- 6 Is there a book on the table? ✗ _____
- 7 Was there a lifeguard at the beach? ✓ _____
- 8 Are there many trees in the park? ✓ _____

D Look at the pictures and answer the questions.

1



Was the pond behind the woods?

No, it wasn't.

2



Where is the stationery store?

3



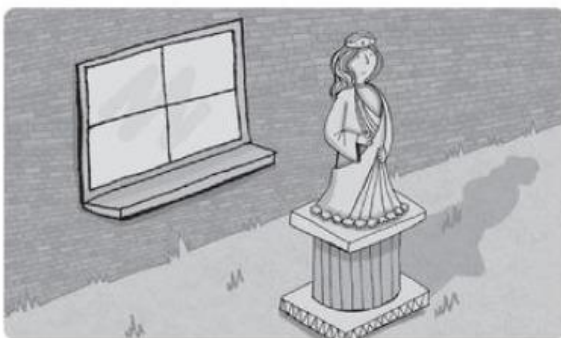
Are there shelves above the desk?

4



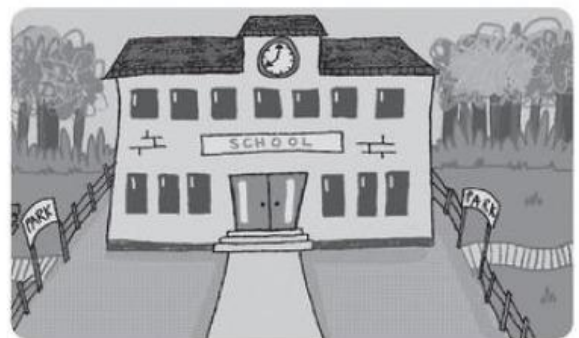
Were the fish in the lake?

5



Is the statue in front of the window?

6



Where is the school?

E Answer the questions.

- 1 Where is your backpack? _____
- 2 Is there a clock above your desk? _____
- 3 Where is your trash can? _____
- 4 Is there a park across from your house? _____

Words

A Look at the chart. Circle the correct words.

	Picked Up Trash At School	Visited a Recycling Plant	Walked To the Park	Planted Flowers
June's Class	9:15	11:00	2:00	2:15
Ali's Class	2:30	8:45	11:15	11:30
Nadia's Class	11:45	9:30	12:45	1:00

- All the classes did the same things at different **times** / weeks.
- June's class walked to the park at **twelve o'clock** / **two o'clock**.
- June's class visited a recycling plant at **eleven o'clock** / **eight o'clock**.
- Ali's class planted flowers at **five-fifteen** / **eleven-thirty**.
- Ali's class picked up trash at school at **two-thirty** / **twelve-thirty**.
- Nadia's class planted flowers at **eleven o'clock** / **one o'clock**.

B Look at the chart in **A** and answer the questions.

- What time did Nadia's class visit a recycling plant?
They visited a recycling plant at nine-thirty.
- What time did June's class pick up trash at school?

- What time did Ali's class walk to the park?

- Did Nadia's class walk to the park at two forty-five?

- Did June's class plant flowers at eleven-thirty?

- Did Ali's class visit a recycling plant at eight o'clock?

Writing Study

A Circle the correct words.

- 1 Mohamed **cleans** / **is cleaning** / **cleaned** his room yesterday.
- 2 My sisters **recycle** / **are recycling** / **recycled** their juice cartons every day.
- 3 I **rescue** / **am rescuing** / **rescued** the cat from a tree yesterday.
- 4 The wind **blows** / **is blowing** / **blew** the leaves off the trees now.
- 5 I **walk** / **am walking** / **walked** to school and I'm late.
- 6 The boys **play** / **are playing** / **played** football yesterday.

Writing

A Read. Wendy imagined she was a recycled newspaper.

I was an old newspaper. A thoughtful girl put me in the recycle bin. I went to the recycling plant. Now I am a new paper bag!



B Imagine you are something that was a recycled thing.
Answer the questions.

- 1 What were you? _____
- 2 How did you get to the recycling bin? _____
- 3 Where did you go? _____
- 4 What are you now? _____

C Now write the story.

What have you learned?

Review

A Write *T* (True) or *F* (False).

Correct the false statements.

1



It's three-thirty. F

It's three forty-five.

2



This is a landfill.

3



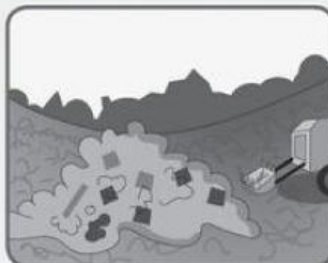
I'm in a stationery store.

4



This is a week.

5



These are resources.



BIG QUESTION 6

**Why should we
take care of
the Earth?**

B Write the sentences.

- 1 across from / The park / the stationery store / is
The park is across from the stationery store.
- 2 the couch / The clock / was / above

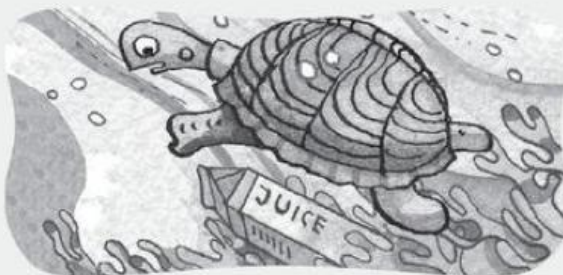
- 3 Joey and Frank / between / The teacher / is

- 4 the benches / in front of / The roses / were

C Match the questions to the answers.

- | | | |
|---|-----------------------|---|
| 1 Where's the landfill? | <input type="radio"/> | <input type="radio"/> a Yes, they are. |
| 2 Where were the cartons? | <input type="radio"/> | <input type="radio"/> b No, they weren't. |
| 3 Were the toys behind the couch? | <input type="radio"/> | <input type="radio"/> c It's behind the recycling plant. |
| 4 Are the buses in front of the school? | <input type="radio"/> | <input type="radio"/> d They were in the recycling plant. |

D Look at the pictures and write where Turtle is.



1 Turtle is above the carton.



2 _____



3 _____



4 _____