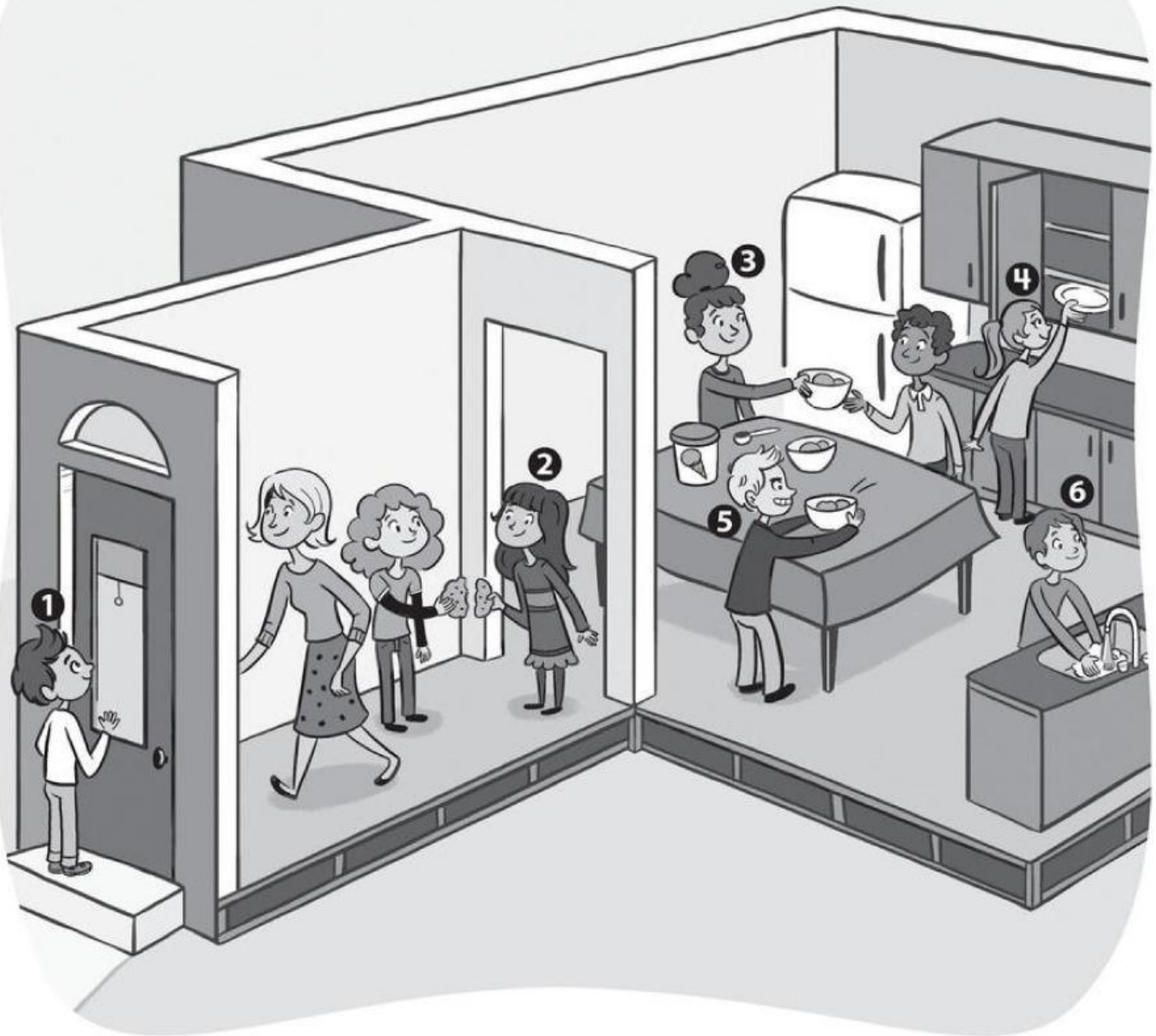


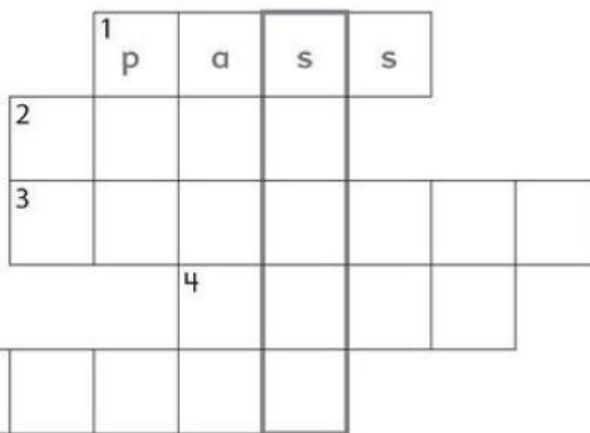
Words

A Look at the picture. Number the words.



<u> 6 </u> wash	<u> </u> knock	<u> </u> put away
<u> </u> grab	<u> </u> pass	<u> </u> share

B Complete the puzzle. Then find the secret word and complete the sentence.



Remember! It's good to _____ things with your friends!

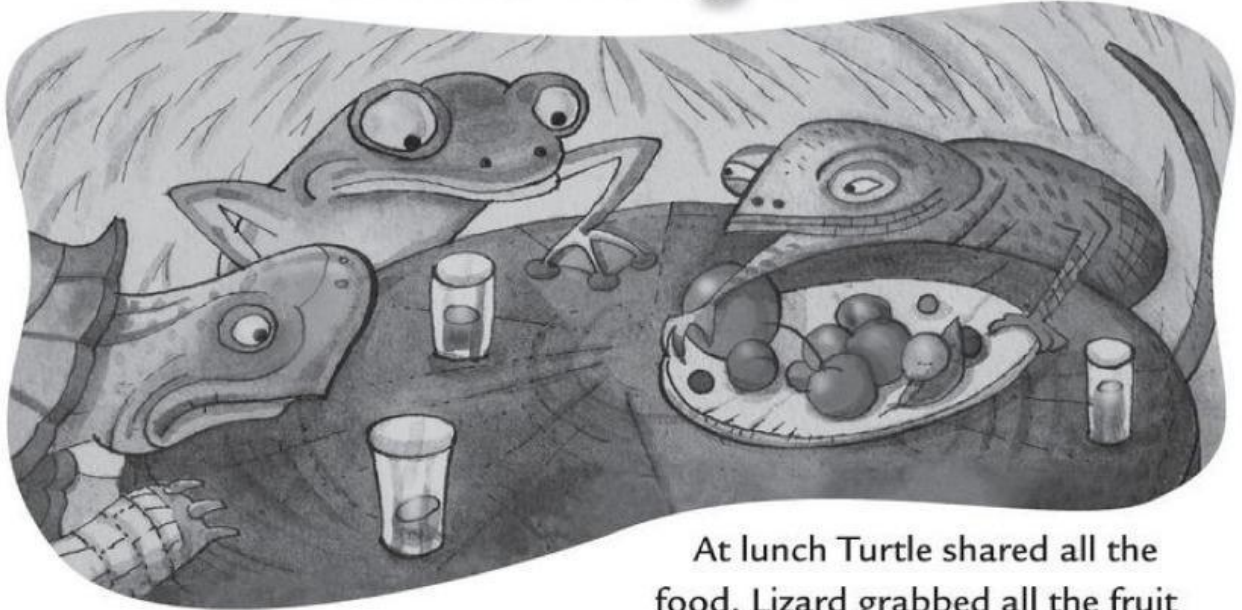
C Circle the correct word.

- 1 It's very _____ to grab food at the table.
a nice **b** rude
- 2 It's good to _____ your toys with your friends.
a share **b** wash
- 3 It's _____ to take turns when we play on the swings.
a nice **b** rude
- 4 You should always _____ your hands before you eat.
a put away **b** wash

A Read the story quickly. Answer the question.

Who shared all the food at lunch?

Lunch at Frog's House



Frog invited Turtle and Lizard for lunch. Turtle knocked on the door and asked, "May I come in?" Lizard didn't knock or ask. He just opened the door and walked in. Turtle brought fruit for Frog. Lizard didn't bring anything. Turtle washed before he came to the table, but Lizard didn't.

Think

Is Turtle polite?

At lunch Turtle shared all the food. Lizard grabbed all the fruit and didn't share it. Turtle asked Frog to pass the food, but Lizard just grabbed his.

After lunch, Turtle helped Frog clean up, but Lizard went home early. He didn't say, "Thank you." or "Goodbye."

Think

Is Lizard thoughtful?

Turtle invited Frog for lunch the next day, but he didn't invite Lizard. Do you know why?

Comprehension

A What part of the story do you like? Check (✓).

Frog ☐ Turtle ☐ Lizard ☐

B Circle the correct the theme of the story.

- 1 It's fun to have lunch with friends.
- 2 We should eat a lot of fruit.
- 3 We should always be polite and thoughtful.

C Circle *True* or *False*. Correct the false statements.

- 1 Turtle invited Frog and Lizard to lunch.

True **False** Frog invited Turtle and Lizard. _____

- 2 Lizard is polite.

True **False** _____

- 3 Lizard brought food to share.

True **False** _____

- 4 Turtle is thoughtful.

True **False** _____

- 5 Turtle cleaned up after lunch.

True **False** _____

- 6 Lizard left before Turtle.

True **False** _____

- 7 Turtle, Frog, and Lizard have lunch together the next day.

True **False** _____

Grammar in Use

A Study the grammar.

Learn Can and May

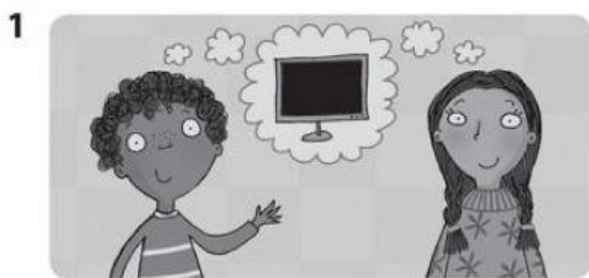
May	I we	come in?	Yes, you may.	No, you may not.
Can	I you he she it we they	have a cookie?	Yes, I you he can.	No, she it we they can't.



B Match the beginnings of the sentences to the ends.

- | | | |
|-----------------|---|------------------------------------|
| 1 Can I have | • | • a a game on the Internet? |
| 2 May we come | • | • b in? |
| 3 May I use | • | • c with us? |
| 4 Can he bring | • | • d some apple juice? |
| 5 May we play | • | • e your phone? |
| 6 Can she come | • | • f the window? |
| 7 Can they show | • | • g his dog? |
| 8 May I open | • | • h you their art project? |

C Look at the pictures. Write the questions and complete the answers.



Can / watch TV?

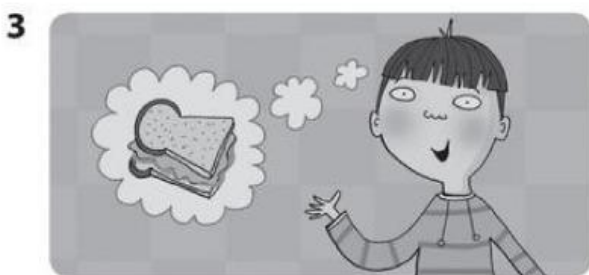
Can we watch TV?

No, you can't.



May / use your ruler?

Yes,



Can / have a sandwich?

Yes,



May / go outside?

No,



Can / play a video game?

No,



May / go to the playground?

Yes,

D Check (✓) the questions you ask at home.

1 ☐ May I watch TV?

2 ☐ Can I play outside?

3 ☐ May I go on the Internet?

4 ☐ Can I make a sandwich?

5 ☐ May I have some soda?

6 ☐ Can I play a video game?

Words

A Circle the correct word.

1



computer
headphones

2



laptop
camera

3



tablet
cell phone

4



tablet
headphones

5



computer
cell phone

6



laptop
camera

B Complete the chart with the words in **A**.

We Can Play Games On It	We Can't Play Games On It
1 <u>computer</u>	5 _____
2 _____	6 _____
3 _____	
4 _____	

Writing Study

A Complete the sentences.

- 1 It was clean yesterday. It is dirty now.
- 2 I happy yesterday. I sad today.
- 3 Her students rude yesterday. They polite today.
- 4 My parents in Italy yesterday. They in England today.
- 5 It sunny yesterday. It raining now.
- 6 The dog quiet yesterday. It loud today.

Writing

A Read about Janet, a very thoughtful person.

Janet is my friend. She's a very thoughtful person. She takes turns. She always shares her candy, too. She puts away her toys and cleans up. She is never loud, and she never grabs things.



B Think about a rude or a thoughtful person. Answer the questions.

- 1 What's the person's name? _____
- 2 Is he / she thoughtful or rude? _____
- 3 What does he / she always do? _____
- 4 What does he / she never do? _____

C Now write about that person.

[illegible]

A Write the words and match the words to the pictures.

- wash

Q



-

k

-

C



©



B Match the beginnings of the sentences to the ends.

a

- a to the park?"
"Yes, you can."

b

- b** pens theirs?"
"No, they're his."

C

- c** computer hers?"
"Yes, it is."

d

- d** an apple?"
"Yes, you may."

P

- e is this?"
"It's his."

f

- f** are these?"
"They're mine."



BIG QUESTION 5

How do people get along with each other?

C Look at the pictures. Complete the questions and write the answers.



1 Can we go _____?



2 Whose _____?



3 May I use _____?



4 Is this _____?

D Complete the sentences.

down are ~~up~~ were away was

- 1 We're cleaning _____ up _____ the classroom.
- 2 Miguel and Tim _____ in the living room now.
- 3 My mother put _____ the cookies after lunch.
- 4 I _____ very tired yesterday.
- 5 The students always sit _____ on the school bus.
- 6 My friends and I _____ at the swimming pool yesterday.