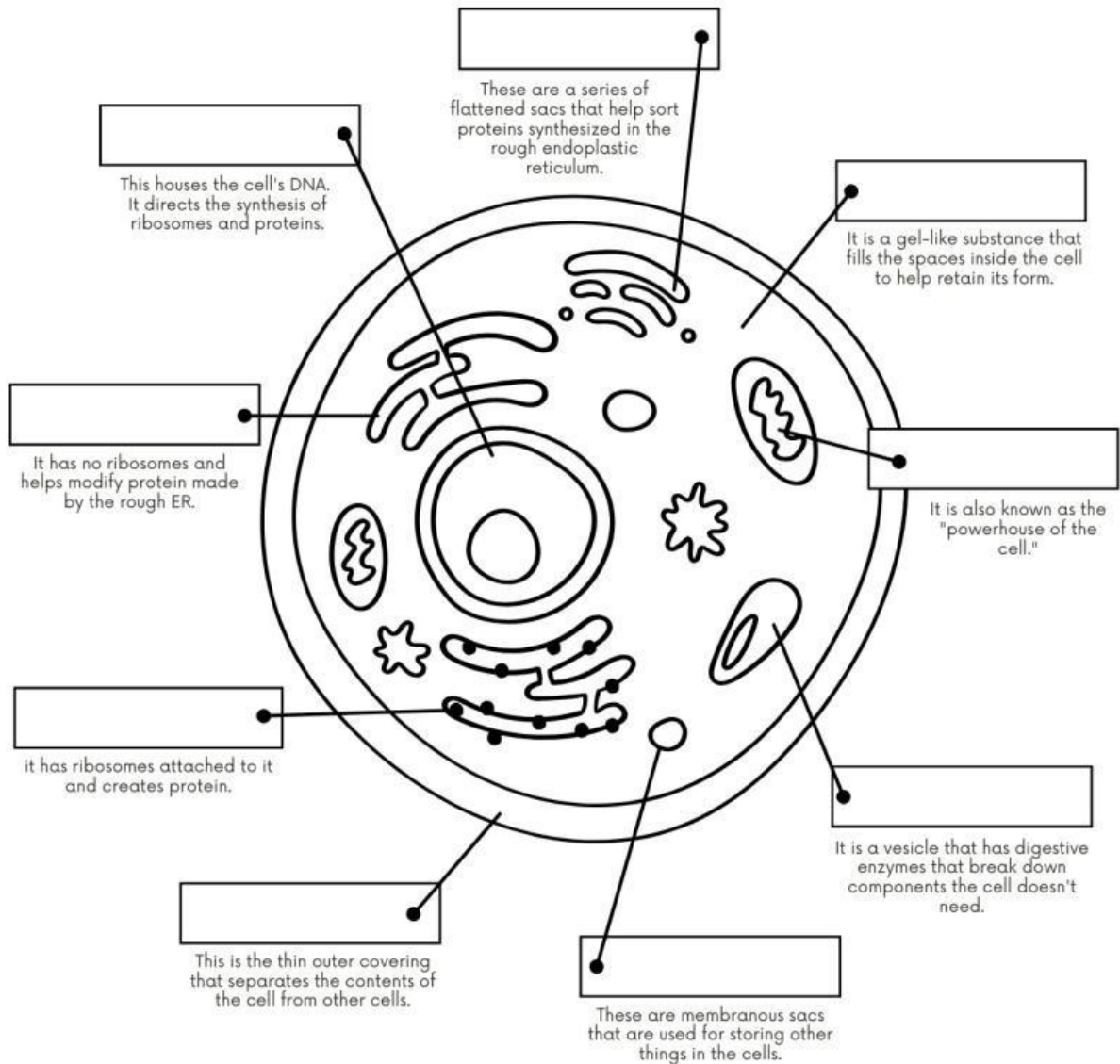


Name:

Date:

LABEL THE PARTS OF THE ANIMAL CELL



Cytoplasm	Golgi apparatus	Lysosome
Nucleus	Vacuoles	Smooth Endoplasmic Reticulum
Cell Membrane	Rough Endoplasmic Reticulum	Mitochondrion

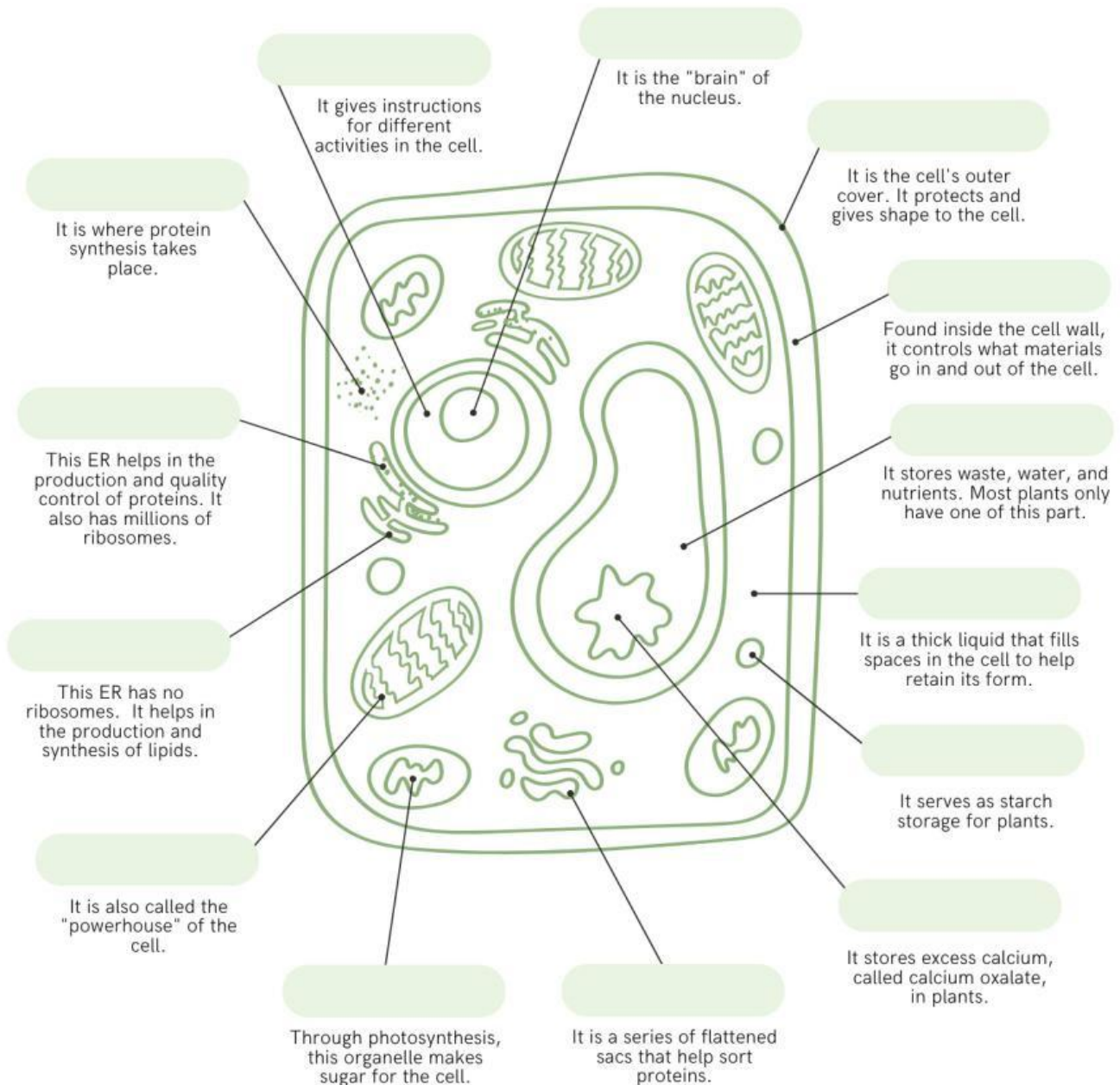
Name _____

Date _____

Year _____

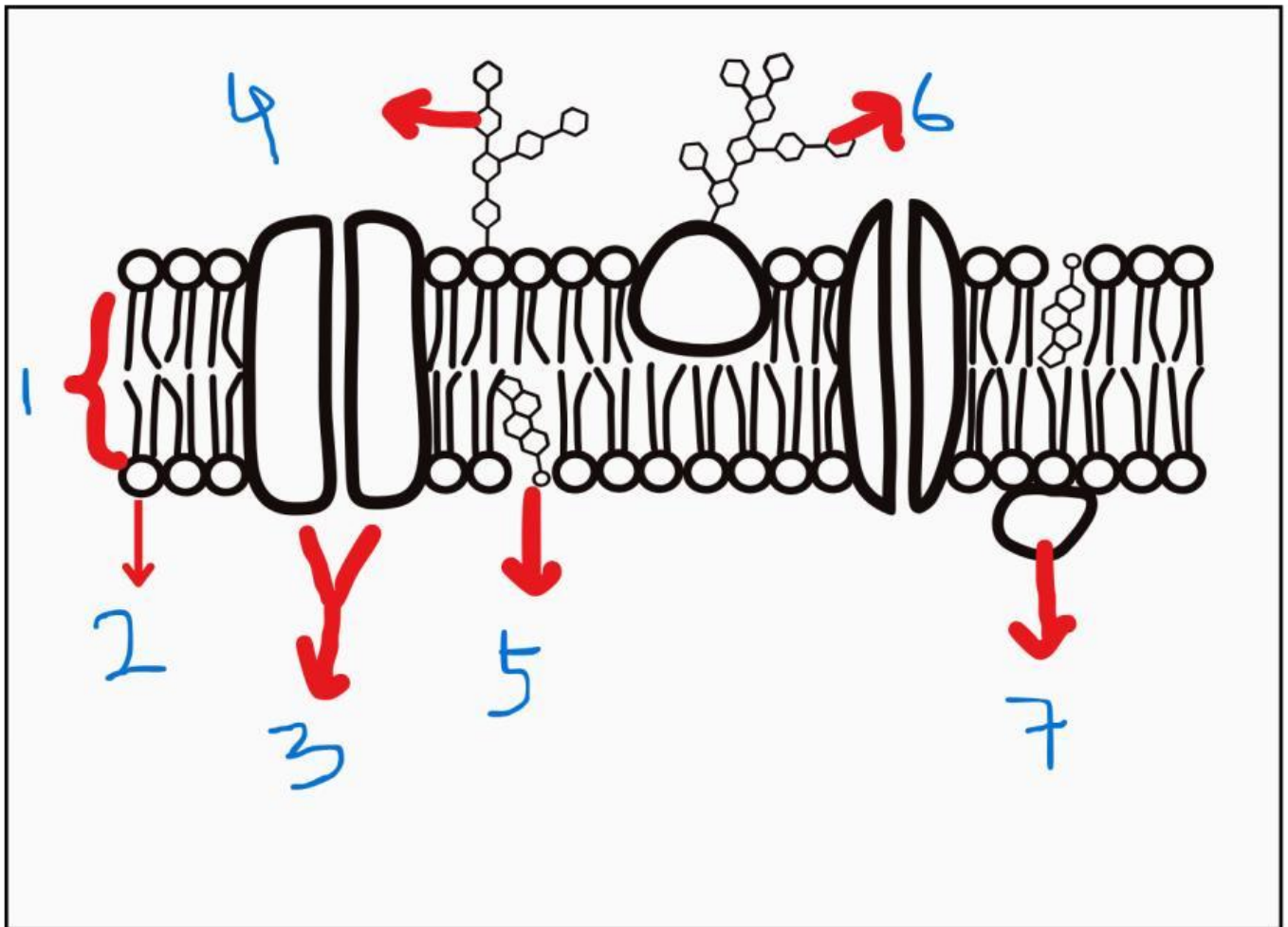
Teacher _____

LABEL THE PARTS OF THE PLANT CELL



The cell membrane, nucleus, cytoplasm, and everything in between.

PLASMA MEMBRANE STRUCTURE



1. Tuliskan bagian-bagian yang ditunjuk!
2. Apa fungsi dari membran sel?
3. Jelaskan Transport Membran melalui Membran!



PERBEDAAN SEL HEWAN, SEL TUMBUHAN , DAN SEL PROKARIOTIK

ORGANELS	ANIMAL CELL	PLANT CELL	PROKARYOTE CELL
Cell Wall			
Cell Membrane			
Nukleus			
Ribosom			
Golgi Aparatus			
RE Kasar			
RE Halus			
Mitochondria			
Kloroplas			
Lisosomes			
Peroksisom			
Glioksisom			
Vakuola			