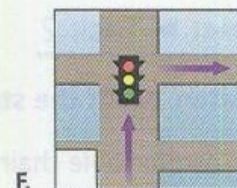
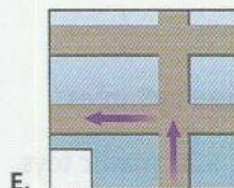
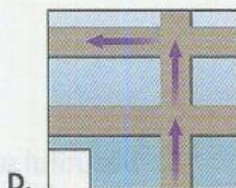
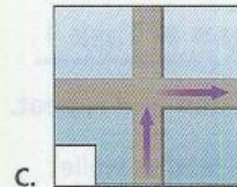
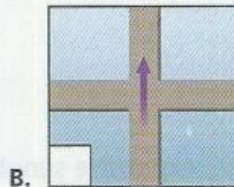
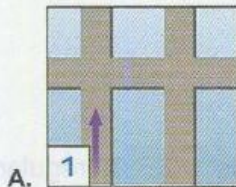


Directions

Getting Ready

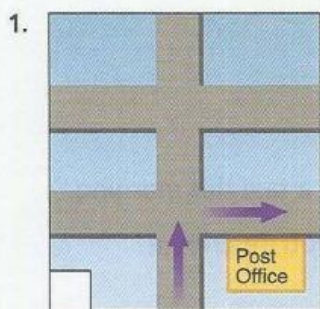
Match each direction with a map.

1. Go straight up the block.
2. Turn right at the light.
3. Take the first street on the left.
4. Go straight for two blocks. Then turn left.
5. Go through the intersection.
6. Take a right at the corner.

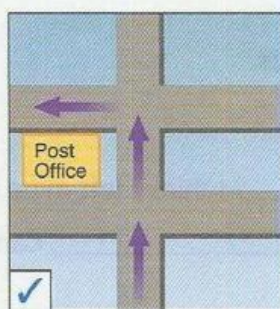


CD 3-23 Listening 1

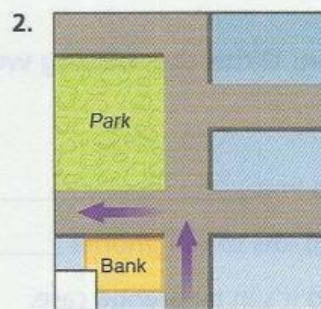
People are giving directions. Listen and check (✓) the correct map.



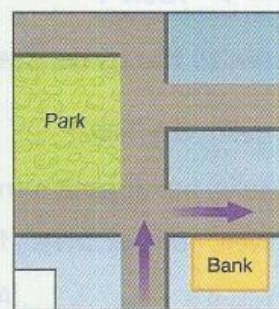
a.



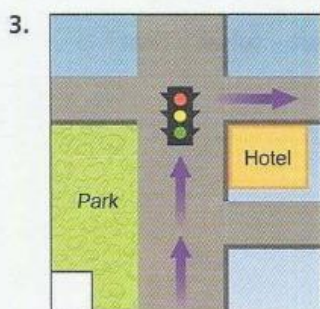
b.



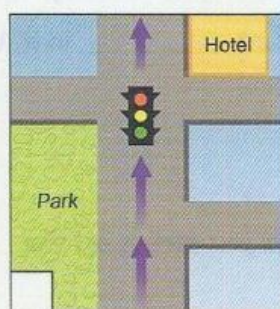
a.



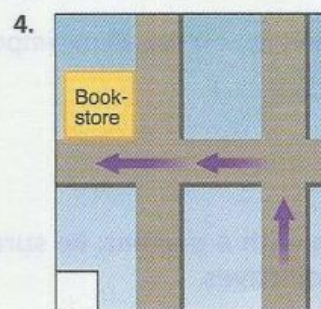
b.



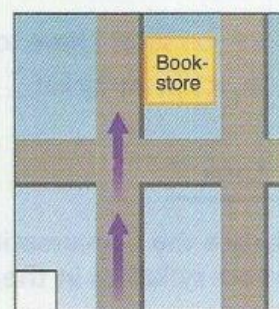
a.



b.



a.



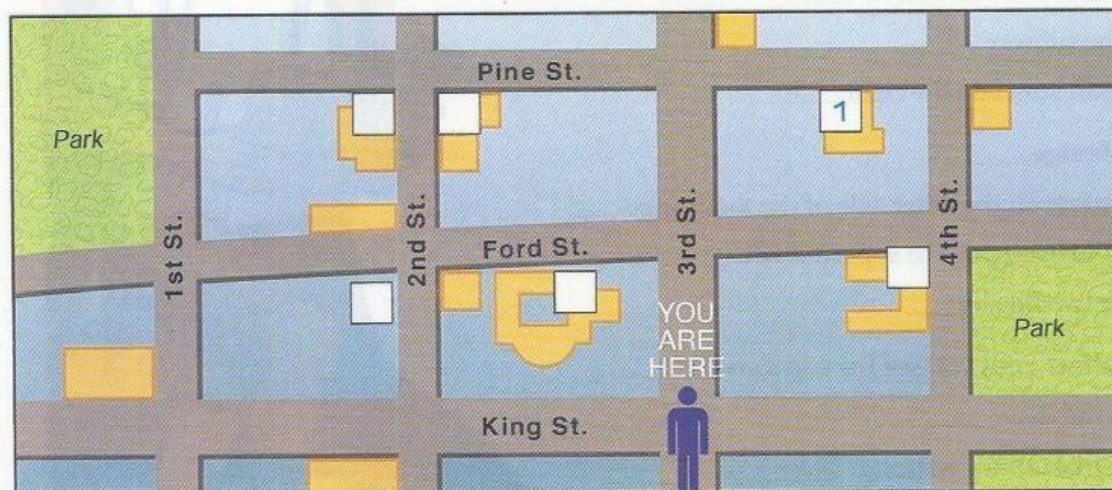
b.

Listening 2

CD 3-24 ► Task 1

Look at the map and listen to the directions. Write the number of each place on the map.

- | | |
|--------------------------|-----------------------|
| 1. a bank | 4. the post office |
| 2. the Peking Restaurant | 5. the tourist office |
| 3. a supermarket | 6. the art museum |



CD 3-24 ► Task 2

Listen again. Complete the statements for each set of directions.

- Go straight up Third Street for two _____ and _____ right on Pine Street.
- It's _____ your left, on the _____ of Ford and Second.
- Go left down King and _____ go _____ Second Street for two blocks.
- It's not far _____ here.
- Go up Third Street and turn _____ on Ford. It's in the first big building you see on your _____.
- Go to the _____ of the block.

Listening 3

CD 3-25 ► Task 1

People are giving directions to their homes. Listen and number the directions in the correct order.

1. Go down the street and my house is on the left. ____
Walk past the hotel for two blocks. ____
Come out of the subway. 1
You'll see a small street on the right. ____
2. Cross the footbridge. ____
Go down the street on the other side of the footbridge. ____
Get off the bus across from the supermarket. ____
Walk north for two blocks. ____
3. Go down the street until you see the supermarket. ____
Walk towards the river. ____
Take the first street on the left. ____
Go through the intersection. ____
4. Get off the bus across from the school. ____
Go down the street until you see a church. ____
Turn right just past the gas station. ____
Walk north for about four blocks. ____



CD 3-25 ► Task 2

Listen again. What should each person bring? Circle the correct answer.

- | | |
|---|------------------|
| 1. a. food | 3. a. vegetables |
| <input checked="" type="radio"/> b. music | b. chips |
| c. a DVD | c. fruit |
| 2. a. snacks | 4. a. sneakers |
| b. soda | b. balls |
| c. music | c. tennis racket |

IR Language
مرجع آموزش زبان ایرانیان

Pronunciation

Intonation for confirming information

CD 3-26 ▶ Task 1

Listen and repeat.

1. A: Is there a post office near here?
2. A: Could I please have a map?
3. A: Do you know where the restrooms are?
4. A: I'm trying to find a supermarket.

B: A post office?

B: A map?

B: The restrooms?

B: A supermarket?

Pronunciation Help

Use rising intonation to ask a question that confirms information.

▶ Task 2

Read the sentences to a partner. One student is A, the other student is B.

Dictation

CD 3-27 ▶ Task 1

Listen. Write the missing words. Then practice with a partner.

A: Excuse me. I'm looking for the tourist office.

B: _____ office? It's not far from here. Go right on Brentwood Road, then left at the light.

A: Left _____ the _____?

B: Yes, that's right. Then it's about halfway down the block on the right.

A: _____ right?

B: Yes. You can't miss it.

Conversation

Work in pairs. Give your partner directions from your school to your home.