



**SMK RIAM, MIRI**  
**PENTAKSIRAN SUMATIF I**  
**MAY 2022**

**ENGLISH LANGUAGE**  
**PAPER 1**  
**1 HOUR 15 MINUTES**  
**FORM 3**

NAME : \_\_\_\_\_

CLASS : \_\_\_\_\_

Arahan :

1. Tulis **nama** dan **angka giliran** pada kertas jawapan anda.
2. Kertas soalan ini mengandungi **lima** bahagian yang terdiri daripada **40** soalan. Jawab **semua** soalan.
3. Tulis jawapan anda pada kertas jawapan yang disediakan. Serahkan kertas jawapan anda kepada pengawas peperiksaan selepas tamat ujian.

**Part 1**

**Questions 1 - 8**

*Read the text carefully in each question. Choose the best answer **A, B or C**. For each question, mark the correct answer on your answer sheet.*

I am very devoted to my mother. My father passed away when we were very young and my mother had to work very hard and earn enough to support me and my five siblings. She has been working as a maid for more than ten years.

## National Junior Badminton Tournament

10 –19 July, 2020  
**Time:** 10.00 a.m to 5.00 p.m  
**Venue:** Stadium Negara, Kuala Lumpur  
**Organisers:** National Badminton Federation

- |   |   |
|---|---|
| <p>1 From the extract above, we can conclude that the writer</p> <p>A is very close to his siblings</p> <p>B loves his mother for all she has done</p> <p>C is unhappy that his father was not around to help</p> | <p>3 The National Junior Badminton Tournament</p> <p>A will be held for nine days</p> <p>B will last for more than eight hours per day</p> <p>C is organised by the National Badminton Federation</p> |
|---|---|

## CELEBRATING ANIMALS

Come and celebrate with our animals!  
 The Annual World Animal Day will be held on  
 28 September at the National Zoo from 10.00 a.m.  
 Lots of fun activities with all the animals

This year's theme is **Animals Need Love Too!**  
 Call 03-61425999 to register

To	Lisa
From	Mary
Subject	Trip to Sarawak

Hi,

I will be going to Sarawak next month for holiday. Are you interested in joining me? I will be staying in Kuching for a week. I hope you will be able to come. Please let me know by this weekend.

Mary

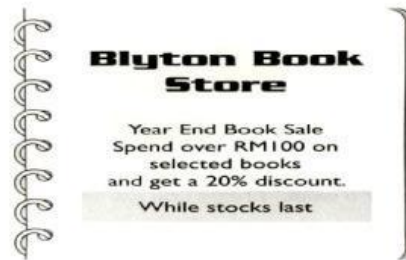
- |  |  |
|--|--|
| <p>2 The Annual World Animal Day is</p> <p>A held once a year</p> <p>B only for animal lovers</p> <p>C organized by the National Zoo</p> | <p>4 Mary wrote this e-mail to</p> <p>A invite Lisa to join her on this trip</p> <p>B inform Lisa about the trip to Sarawak</p> <p>C let Lisa know that she will be going to Sarawak</p> |
|--|--|

Exercise is a great way to improve your health and reduce the risk of developing several diseases like type 2 diabetes, cancer and cardiovascular disease. Most importantly, regular activity can improve your quality of life. Both young and elderly should get at least 60 minutes of exercise every day. Do yoga, bike, swim, walk, jog or just playing games with your friends.

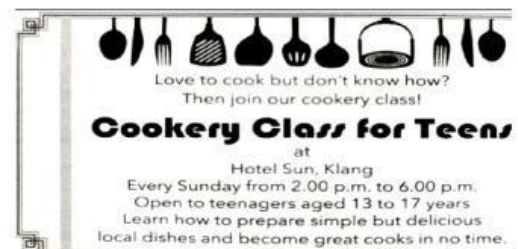
- 5 From the extract we know that
- A exercise is the best way
  - B only the elderly should exercise every day for 60 minutes
  - C exercise can lower the chances of getting type 2 diabetes, cancer and cardiovascular disease

Rizal,  
Your piano teacher called to say that he has to cancel today's class as he is down with a bad flu. He asked you to practise on your own for one hour and that he will have a two-hour session with you next week.  
Mum

- 6 Rizal's mother wrote this message to
- A remind him to practise playing the piano
  - B inform him that his piano class has been cancelled
  - C explain why his piano teacher cannot make it to class



- 7 Shoppers will get a
- A 20% discount on selected books that they buy
  - B 20% discount on all books with minimum purchase of RM100
  - C complimentary book of their choice if they spend more than RM100



- 8 From the advertisement we know that
- A there is no age limit for participants
  - B classes will be held on weekends only
  - C participants will learn how to cook simple and delicious Malaysian dishes

[ 8 marks ]

## Part 2

### Questions 9 - 16

Read the text below and correct the underlined errors. For each question, write the correct word in the space provided on your answer sheet.

Jeremy, my neighbour's son, is (0) miss from home. His parents are very upset and anxious. All their efforts to trace his whereabouts (9) has failed. They have appealed to friends and police (10) to help. Jeremy left for school this morning as usual. It is now about 7.00 p.m and he has not returned home. He (11) was normally home by 3.00 p.m every day. His anxious parents made inquiries at the school (12) and the principal was not of any help. They asked a few of his classmates and they (13) say that they saw him leave school grounds at about 2.00 p.m with a lady (14) on a black Mercedes Benz. Jeremy parents (15) is very anxious as there was apparently (16) an kidnapping case a few weeks ago in another school in the district. They need all the help and support from everyone. Please contact the family if you have any information.

9	
10	
11	
12	
13	
14	
15	
16	

[ 8 marks ]

### Part 3

Read the text below and answer questions 17 to 24

#### Asparagus - An Expensive and Nationally Balanced Vegetable

Asparagus is an expensive vegetable and a member of the lily plant. Asparagus has freshy spears topped with budlike, compact heads. Native to the Mediterranean region and Africa, asparagus is now grown all over the world. Asparagus are either green, greenish-purple or white. White asparagus is grown in large quantities in France, which is why it is commonly found in Europe. The white variety is grown entirely underground so colour-producing chlorophyll never develops and the stalks stay white.

Although there are more than 300 varieties of asparagus, only 20 are edible. Asparagus has an intense savoury flavour and is known for being one of the most nutritionally balanced vegetables. Asparagus is low in calories and carbohydrates, but relatively rich in protein compared to other vegetables. It is also a source of numerous vitamins especially vitamins A and C. Asparagus is an excellent source of folate. Asparagus has even been used in treatment of arthritis and rheumatism.

Asparagus should be kept whole stored in the refrigerator. To maintain freshness and moisture, the ends should be wrapped in a damp paper towel, then placed in a plastic bag and stored upright in the fridge. Asparagus should be eaten within four days of purchase to enjoy its benefits and taste.

#### Questions 17 - 24

Complete the following table.

Choose **no more than three words and / or number** from the text for each answer. For each question, write your answer in the space provided.

Asparagus - An Expensive and Nationally Balanced Vegetable	
Belongs to which group of plants	17 _____
Originally from	18 _____
Colour of asparagus	19 _____
Flavour	20 _____
Total number of varieties that can be eaten	21 _____
Nutritional value : Rich in	22 _____
Low in	23 _____
Used to treat	24 _____

[8 marks]



#### Part 4

Read the text and answer questions 25 to 34.

The Niah National Park is located on the northern edge of a limestone mountain named Gunung Subis on Sungai Niah. It is situated around 3 km from the small town of Batu Niah and about 110 km from Miri. The national park is an important prehistoric site where human remains from 40,000 years ago were found. This is the oldest recorded human settlement in East Malaysia. It is also where the Niah Caves are located.

The caves consist of one big cave (The Great Cave) and several smaller caves including the popular Painted Cave and The Large Chamber or Padang. In 1958 the Great Cave and the Painted Cave were declared national historic monuments under the supervision of the Sarawak Museum. The 3,100 hectares of rainforest and limestone hills around the caves were gazetted as Niah National Park in 1974.

The main cave, Niah Great Cave, is made up of several large chambers with high ceilings. Access to the Great Cave is via the famous Niah plankwalk. While walking all the way into the Great Cave, different species of trees and plants from the beautiful tropical rainforest can be seen. Wildlife is a common sight and you may even spot one or two hornbills.

The Painted Cave, situated in a much smaller limestone block of its own, is some 150 metres from the Great Cave. The Painted Cave's south eastern tip has rock paintings, dating 1,200 years old, all over its wall. In the cave is also the ancient burial site of the death ships. The death ships are boat-like coffins that were used to contain the bodies of the dead, years ago. The contents of the death ships have been transferred to the Sarawak Museum and what is left to see is the burial ground of the coffins.

The caves are also well known for the bird's nest industry. Every section of the ceiling in the caves where there are swiftlets roosting is privately owned. There are more than half a million swiftlets living in the caves. Only the owner has the right to collect the nests. Collection is done half-yearly. The collector climbs up hundreds of feet on a single pole to the cave ceiling and scrapes off the nest in flickering candlelight.

#### Questions 25 - 32

Answer the questions below.

Choose **no more than five words and or a number** from the text for each answer. For each question, write your answer in the space provided.

25. The Niah National Park is located on a mountain called \_\_\_\_\_. [ 1 mark ]
26. The Niah National Park is considered a prehistoric site because of the presence of human remains dating back to \_\_\_\_\_. [ 1 mark ]
27. The Great Cave and the Painted Cave were declared national historic moments in \_\_\_\_\_. [ 1 mark ]
28. In 1974 the rainforest and limestone hills around the caves were \_\_\_\_\_. [ 1 mark ]
29. To get to the Great Cave visitors have to use the \_\_\_\_\_. [ 1 mark ]
30. The Painted Cave is situated about \_\_\_\_\_ from the Great Cave. [ 1 mark ]
31. A very significant part of the Painted Cave is the burial site of the \_\_\_\_\_. [ 1 mark ]
32. The presence of numerous swiftlets has made the caves popular for the \_\_\_\_\_. [ 1 mark ]

#### Questions 33 - 34

Complete the table below with **a word** from the text. For each question, write your answer in the space provided on your answer sheet.

Meaning	Word/Phrase
33 to be able to enter	[ 1 mark ]
34 moved to another place	[ 1 mark ]

[10 marks]

## Part 5

### Questions 35 - 40

You are going to read an article about a new school. Six sentences have been removed from the article. Choose the sentences (A - H) to fit each gap (35 - 40). There are two extra sentences which you do not need to use. For each question, mark the correct answer (A - H) on your answer sheet.

Twenty students from the Nature Society of SMK Bukit Tiga participated in a camping expedition organised by the Selangor Nature Society. (35) \_\_\_\_ The students assembled at the school canteen on 1 May at 6.30 a.m and boarded the bus after their teacher had taken their attendance. (36) \_\_\_\_ It was a two-hour journey to the Forest Reserve.

(37) \_\_\_\_ He welcomed them and hoped that they would have a wonderful experience with nature. They had breakfast and later set up their tents. After lunch they went for a swim in the river near the camp site. The water was crystal clear and cold. As they were tired they slept very early after dinner. (38) \_\_\_\_

The second day they went jungle trekking. They were introduced to the interesting flora and fauna. After lunch they continued their hike to the hill station and only reached late in the evening. (39) \_\_\_\_ They sang, danced and cracked jokes around the campfire. (40) \_\_\_\_ They had lunch and packed their things to leave for home. The director and his staff were present to bid them farewell. They thanked him for making their trip a memorable experience.

- A They had the sound of crickets and some nocturnal animals for company.
- B The group left very early in the morning on the third day.
- C The trip was for three days and two nights.
- D The group members were all very excited as it was their first camping trip.
- E They left the school at 7.00 a.m without any delay.
- F The next day, after breakfast, they trekked down hill and arrived at the camp site by midday
- G Later they had a campfire and barbecue.
- H When they arrived, they were introduced to the Director of the Forest Reserve.

[ 6 marks ]

## KERTAS SOALAN TAMAT

Disediakan oleh,

(ALEXANDER AMUS)  
PENGGUBAL SOALAN

Disemak Oleh,

(JESICA GAMBONG AK UNTING)  
PENYELARAS

Disahkan oleh,

(ENJILA AK ALES)  
GURU KANAN