

EXAM: UNIT 2

NAME: _____

NATURAL SCIENCE

1. Match the parts of the digestive system to their functions. Write the number.

a. nose and mouth • ☐

b. oesophagus • ☐

c. stomach • ☐

d. small intestine • ☐

• 1. breaks down food and mixes it with gastric juices

• 2. crushes food and mixes with saliva

• 3. works with the liver to dissolve and extract nutrients from food

• 4. long stretchy tube

2. Are the following sentences true (T) or false (F)? Correct the false ones.

a. Air passes from our nose and mouth to the lungs via the oesophagus. ☐

b. Air passes from the bronchi to the bronchioles and then to the alveoli. ☐

c. There are about 5 000 alveoli in each lung, covered with a network of capillaries. ☐

d. Carbon dioxide passes from the alveoli to the blood and oxygen is passed back. ☐

e. Carbon dioxide is expelled through the anus. ☐

3. Select the correct option.

It carries nutrients and waste products.

It gives the blood its colour.

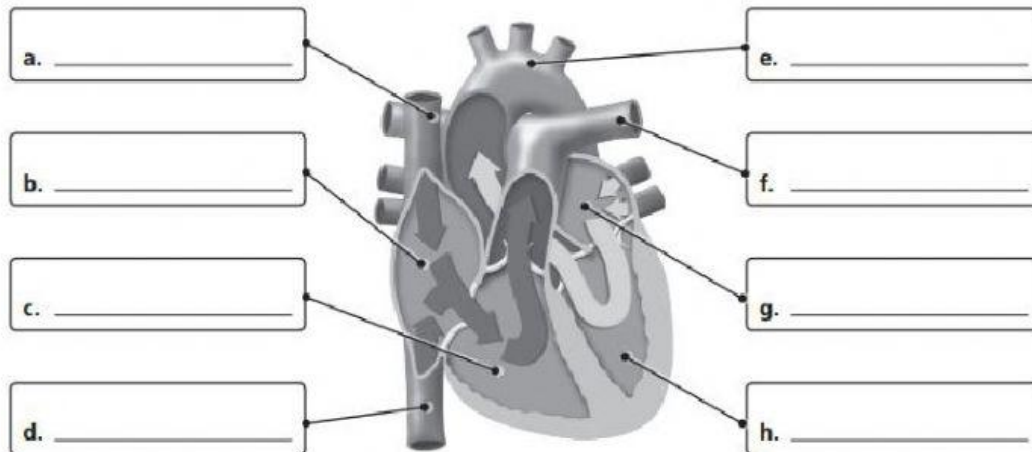
It fights viruses.

It carries oxygen and carbon dioxide.

It heals cuts.

It is 90% water.

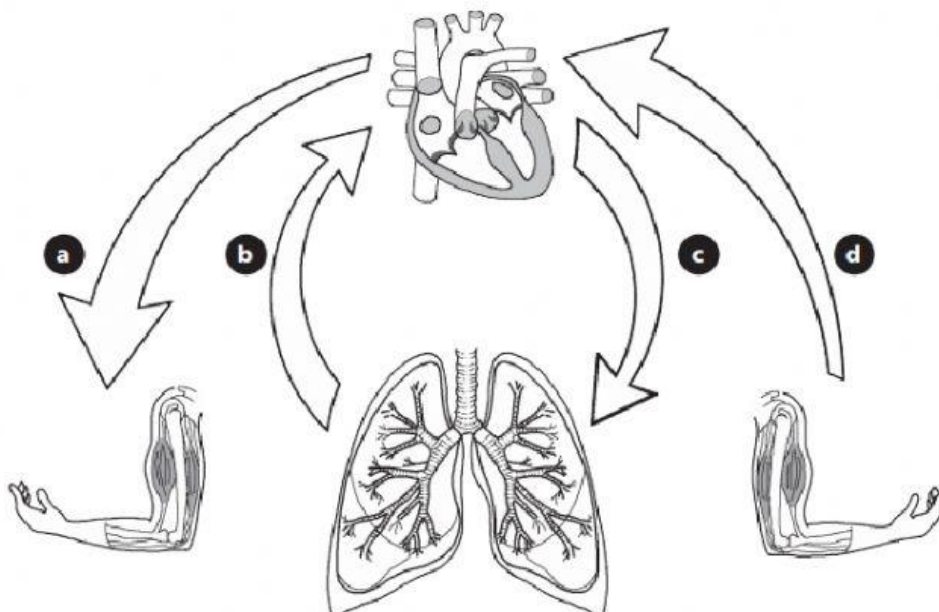
4. Label the following parts.



5. How does blood circulate? Do the following sentences describe pulmonary circulation (P) or systemic circulation (S)?

- a. Blood leaves the heart and travels to the lungs through the pulmonary artery. ☐
- b. The superior vena cava and inferior vena cava carry deoxygenated blood to the heart. ☐
- c. Blood is pumped to the body through the aorta. ☐
- d. Blood returns to the heart through the pulmonary veins. ☐
- e. Capillaries release oxygen and nutrients into cells. ☐
- f. In the lungs, oxygen and carbon dioxide are exchanged. ☐

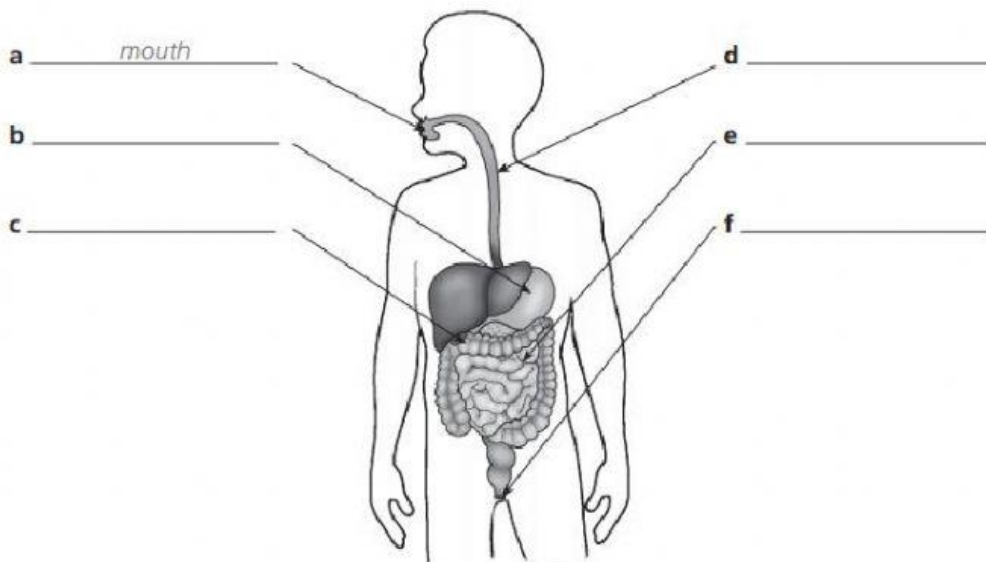
6. Colour the paths of oxygenated blood red and the paths of deoxygenated blood blue.



7. Order the sentences about how the circulatory system works.

- ☐ The blood absorbs oxygen and expels carbon dioxide in the lungs.
- ☒ 1 Deoxygenated blood enters the right side of the heart and is pumped to the lungs.
- ☐ The heart pumps the oxygenated blood to all parts of the body.
- ☐ Oxygenated blood then enters the left side of the heart.
- ☐ Deoxygenated blood returns to the heart.

8. Label the diagram of the digestive system.



9. Order the texts about digestion. Then complete the texts using the words from the diagram.

- ☐ Absorption takes place in the (a) _____. This is where the nutrients from the digested food pass into the blood.
- ☐ Elimination begins when waste that our body can't use passes into the (b) _____. Here, the water from this waste is absorbed back into the blood and the solid waste leaves our body through the (c) _____.
- ☒ 1 Ingestion begins in the (d) mouth where saliva mixes with food. The tongue shapes it into a ball called a bolus. The bolus passes into the (e) _____ and then into the stomach when we swallow.
- ☐ Digestion continues in the (f) _____ where gastric juices break the food down into a thick liquid. This then passes to the small intestine, where digestive juices break down the liquid even more.

10. Match the words with the definitions. Write the letter.

1. Excretion

2. Bolus

3. Deoxygenated

4. Ventricles

a) This is a ball of food shaped by the tongue.

b) These are the lower chambers of the heart.

c) This is the process of removing waste substances from the body.

d) This describes blood that doesn't contain oxygen.