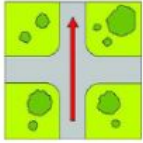


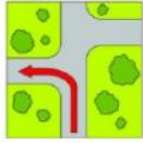
**Developing Potential for Success School**  
**Building Wisdom with Virtues**  
**Vocabulary Examination**

Name: \_\_\_\_\_

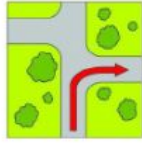
A. Look at the following pictures and write the correct words.



1. \_\_\_\_\_



2. \_\_\_\_\_



3. \_\_\_\_\_



4. \_\_\_\_\_



5. \_\_\_\_\_



6. \_\_\_\_\_



7. \_\_\_\_\_



8. \_\_\_\_\_



9. \_\_\_\_\_



10. \_\_\_\_\_



11. \_\_\_\_\_



12. \_\_\_\_\_



13. \_\_\_\_\_



14. \_\_\_\_\_



15. \_\_\_\_\_



16. \_\_\_\_\_



17. \_\_\_\_\_



18. \_\_\_\_\_



19. \_\_\_\_\_



20. \_\_\_\_\_



21. \_\_\_\_\_



22. \_\_\_\_\_



23. \_\_\_\_\_



24. \_\_\_\_\_



25. \_\_\_\_\_



26. \_\_\_\_\_



27. \_\_\_\_\_



28. \_\_\_\_\_



29. \_\_\_\_\_



30. \_\_\_\_\_



31. \_\_\_\_\_



32. \_\_\_\_\_



33. \_\_\_\_\_



34. \_\_\_\_\_



35. \_\_\_\_\_

**B. Match the following words with their definitions.**

Words	Definitions
1. Apartment block (n)	A. a building containing a swimming pool and other places where you can play sports
2. Art Gallery (n)	B. a room or building for the display or sale of works of art.
3. Bath mat (n)	C. an electric light supported by a tall pole that is fixed to a base that rests on the floor of a room
4. Bus stop (n)	D. a place where taxis wait for customers
5. Curtain (n)	E. a piece of bedroom furniture like a table with a mirror and drawers
6. Dressing table (n)	F. a metal container that is round and often has a long handle and a lid, used for cooking things on top of a cooker:
7. Floor lamp (n)	G. a piece of material that you stand on after getting out of a bath or shower to stop the floor from getting wet, or a piece of rubber that is put inside the bath or shower to prevent you sliding and falling
8. Flyover (n)	H. a place, usually with a pole with a sign, where a bus stops to allow passengers to get on and off
9. Garage (n)	I. a very tall modern building, usually in a city
10. Industrial factory (n)	J. a building in which Jewish people worship and study their religion
11. Leisure centre (n)	K. a bridge that carries a road or railway over another road
12. Pan (n)	L. a piece of material, especially cloth, that hangs across a window or opening to make a room or part of a room dark or private:
13. Skyscraper (n)	M. A factory, manufacturing plant or a production plant is an industrial site, usually a complex consisting of several buildings filled with machinery, where workers manufacture items or operate machines which process each item into another.
14. Synagogue (n)	N. a building where a car is kept, built next to or as part of a house:
15. Taxi rank (n)	O. a large building that is divided into apartments

1	2	3	4	5	6	7	8	9	10	11	12	13	14	15

**C. Match words in the box with the definitions.**

A. Mixer	B. Train station	C. Carpet	D. Castle	E. Blanket
F. Flipper	G. Overpass	H. Pajamas	I. Supermarket	J. End table

1.	a large strong building, built in the past by a ruler or important person to protect the people inside from attack
2.	a large shop which sells most types of food and other goods needed in the home, in which people take from shelves the things they want to buy and pay for them as they leave
3.	a place on a railway line where trains regularly stop so that passengers can get on or off; a railway station
4.	a bridge that carries a road or railway over another road
5.	a small table placed beside a sofa or other piece of furniture.
6.	a flat cover made of wool or similar warm material, usually used on a bed
7.	soft, loose clothing that is worn in bed and consists of trousers and a type of shirt:
8.	a machine that mixes substances:
9.	a type of large, flat rubber shoe used for swimming, especially underwater
10.	thick material used for covering floors:

**D. Supply words according their definitions.**

1.	the part of a piece of equipment, especially electrical equipment, into which another part fits:
2.	a large, thin, flat usually rectangular piece of something, especially a piece of cloth used for sleeping on:
3.	a curved piece of wire, wood, or plastic on which clothes are hung while they are being stored
4.	a device that controls the flow of liquid, especially water, from a pipe:
5.	a building where fire engines are kept and where firefighters work and stay in the hours they are working
6.	a large building that contains offices
7.	an organization where people and businesses can invest or borrow money, change it to foreign money, etc., or a building where these services are offered:
8.	a road or path that goes under something such as a busy road, allowing vehicles or people to go from one side to the other
9.	a building for Islamic religious activities and worship
10.	a building, room, or outside structure with rows of seats, each row usually higher than the one in front, from which people can watch a performance or other activity:

**E. Choose words in the box to fill in the box.****Getting to sleep**

Sleep is very important. It's just as important for your body like eating and \_\_\_\_\_. If you don't get enough sleep, then you won't be able to \_\_\_\_\_ yourself. Going out with friends, playing \_\_\_\_\_ or even watching movies will not be much fun if you're tired.

People of all ages need sleep, but different people need \_\_\_\_\_ amounts. Babies sleep about twice as much as they stay awake. \_\_\_\_\_ need about eight to ten hours a night, and older people need less. But one person may need more than another even if they are both the same \_\_\_\_\_.

Six out of ten children say they are tired during the day, which \_\_\_\_\_ they are not getting enough sleep. So how can you get to sleep? A good idea is to write down what you are thinking about before you go to \_\_\_\_\_. Then, make sure your bedroom is as \_\_\_\_\_ as possible, and it isn't too hot or too cold. You can also try reading a book. Don't drink soft drinks or use your phone before going to bed. However, playing \_\_\_\_\_ on your computer is the main one to avoid!

**F. Supply words according to their definitions.**

Words	Definitions
1.	a decorative covering around an electric light that reduces its brightness or controls where it shines
2.	a chair built on two pieces of curved wood so that it moves forwards and backwards when you are sitting in it
3.	a special strip of a road, sports track, or swimming pool that is used to keep vehicles or competitors separate:
4.	a theatre where people pay to watch films:



5.	a large room with weights for lifting and other equipment for exercising the body and increasing strength
6.	a table at which one may work, especially one with drawers or compartments for holding tools or materials.
7.	An electrical kitchen device fitted over a cooker and connected to a flue designed to suck off any vapours from cooking.
8.	a kitchen tool that you use for beating food such as eggs and cream in order to add air and make it light:
9.	a cabinet in a bathroom, most often used to store hygiene products, toiletries, and medications. They are usually placed under sinks or above toilets
10.	a tall cupboard in which you hang your clothes, or all of the clothes that a person owns:

**G. Look at the map and find the places according to the direction.**



**A:** \_\_\_\_\_

Go straight on. Then take the first left on to Green Street. Walk past the library and it's the building next to the library on the left.

**B:** \_\_\_\_\_

Go straight on. Go past the traffic lights. You will see a shop on the right. Go past that and it's on the right next to the shop.

**C:** \_\_\_\_\_

Go straight on. Go past the traffic lights and go straight on until you get to the roundabout. At the roundabout turn left. Go past the theatre. It's the building next to the theatre, opposite the hospital.

**D:** \_\_\_\_\_

Go straight on. Go past the traffic lights and take the second right on to King's Road. Go past the bookshop. It's the building next to the bookshop opposite the café.

## Part II: Reading

**Discover the best music, sport and culture in the UK**



# Liverpool

**Liverpool MUSIC**  
**The Beatles Story** The world-famous 1960s music group came from Liverpool. Find out about The Beatles at the 'The Beatles Story' attraction. Open every day except Dec 25 and 26.  

Adult:	£15.95
Student / Senior:	£12.00
Child:	£7.00
Child under five:	Free

**Liverpool SPORT**  
**Liverpool FC** This city loves football. Visit Anfield football stadium, home to Liverpool's favourite football team, and take a tour. Closed on weekends.  

Adults:	£15.00
Under-16s and students:	£9.00
Child under five:	Free

**Liverpool MUSEUM**  
Visit the **Liverpool Museum**. Learn all about the history and culture of Liverpool.  
Free entry!  
Open daily 10 a.m. - 5 p.m.



**Liverpool SHOPPING**  
**Liverpool ONE** Find the best shopping in the centre of Liverpool at Liverpool ONE, Liverpool's new shopping centre. Opened in 2008. More than **160** shops, restaurants, cinemas and cafés.



### A. True/False

- The Beatles were a famous rock group in the 1970s. **(True/False)**
- There are 2008 shops at Liverpool ONE. **(True/False)**
- It costs £15 for adults to tour Anfield stadium. **(True/False)**
- Liverpool FC play their games at Liverpool ONE stadium. **(True/False)**
- You don't have to pay at the Liverpool Museum. **(True/False)**
- Young children can go on the Anfield tour for free. **(True/False)**

### B. Read the passage below and choose the best option.

Abigail Adams was born on November 22, 1744. Adams was the wife of one American president and the mother of another American president. She married John Adams, the second president of the United States on October 25, 1764. John and Abigail Adams had six children together. One of their sons, John Quincy Adams, would later become the sixth president

of the United States.

Abigail Adams is most remembered for the letters that she wrote back and forth to her husband while he was working with the Continental Congress in Philadelphia, Pennsylvania. John Adams would frequently write to her and ask for her advice on both social and political issues of the time. The letters of Abigail Adams to her husband, John Adams, are part of Revolutionary War history because they serve as a firsthand eye-witness account of political life during this time.

Abigail Adams is also known as the first "First Lady" to live in the White House, which became the official residence of the presidential family, after the nation's capital was relocated to Washington, D.C. in 1800. The "First Lady" enjoyed life at the newly built White House mansion even though it was still under construction when the "First Family" moved in.

When Thomas Jefferson defeated Adams in the presidential election of 1800, Abigail and her family moved back to Quincy, Massachusetts. After leaving the White House, Abigail Adams continued to write letters to famous Americans of the time like Thomas Jefferson. She also followed John Quincy's political career with great interest. Abigail Adams died from typhoid fever at the age of 73 on October 28, 1818. Both John and Abigail are buried together in a family crypt in Quincy, Massachusetts.



1. Abigail Adams was not....
  - a. a first lady
  - b. mother of a president.
  - c. a member of Congress
  - d. the first woman to live in the White House
2. What happened first in the selection?
  - a. 1818
  - b. John Adams became president.
  - c. The Adams family returned to Quincy, Massachusetts.
  - d. Abigail Adams moved into the White House in Washington, DC.
3. What question can be answered in the third paragraph?
  - a. When was Abigail Adams married to John Adams?
  - b. Which son later became America's sixth president?
  - c. Who was the first "First Lady" to live in the White House when the capital was relocated to Washington, DC?
  - d. When did Abigail Adams die?
4. Which of the following is not true?
  - a. Abigail Adams wrote letters to her husband while he was in Philadelphia, PA.
  - b. Abigail's son became the second president of the United States.
  - c. Abigail Adams was the wife of an American president.
  - d. Abigail wrote letters to Thomas Jefferson.
5. What does the word "crypt" mean in the last paragraph?
  - a. House
  - b. Earth
  - c. Tomb
  - d. Water
6. Abigail Adams is famous for being a "First Lady" and \_\_\_\_\_.
  - a. for becoming a president herself.
  - b. for the letters that she wrote back and forth to an American president.
  - c. for living during the Revolutionary War.
  - d. for having six children.
  - e. What is implied by the following sentence:
7. Abigail Adams is also known as the first "First Lady" to live in the White House, which became the official residence of the presidential family after the nation's capital was relocated to Washington D.C. in 1800.
  - a. The nation's capital was always located in Washington, D.C.
  - b. Abigail Adams was the last "First Lady" to live in the White House.
  - c. Abigail Adams was the second "First Lady" to live in the White House.
  - d. The nation's capital was in a different location before it was in Washington, D.C.
8. Who won the presidential election of 1800?
  - a. Abigail Adams
  - b. John Adams
  - c. John Quincy Adams
  - d. Thomas Jefferson
9. Which question is NOT answered in the passage?
  - a. How did John Adams die?
  - b. How did Abigail Adams die?
  - c. What did Abigail Adams do after she left the White House?
  - d. Why are the letters between Abigail and John Adams important?
10. Why were the letters of Abigail Adams so important?
  - a. They describe why John Adams should have won the election of 1800.
  - b. They describe the politics of the American Revolution era.
  - c. They describe the Adams family.
  - d. They describe how John Quincy Adams will eventually become president.