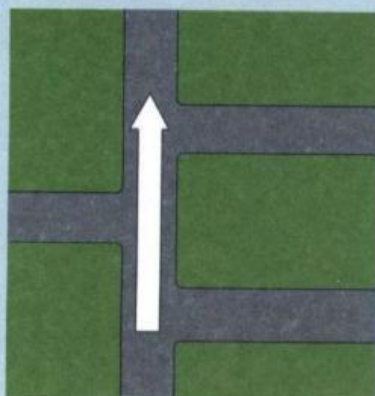


54 Directions

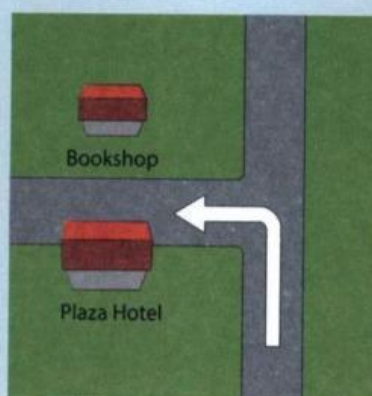


GLOSSARY

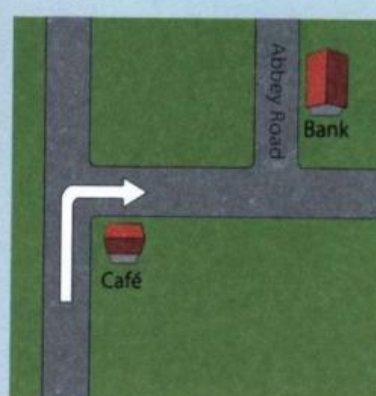
directions	words that tell you how to get to a place
excuse me	When you want to talk to sb you don't know, especially in the street, it is polite to say Excuse me .
near	not far away, close to sb or sth
nearest	the first one from where you are
way	a road that you must take to get to a place



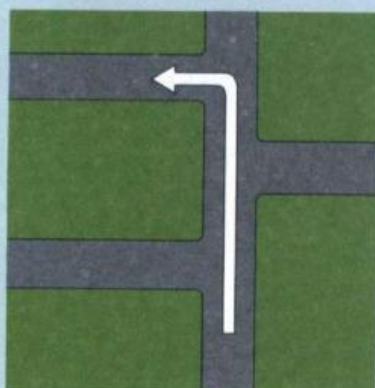
Go straight on. OR Keep going.
It's about ten minutes.



Go along here and turn left.
The bookshop is **opposite** the Plaza Hotel.



Turn right at the café, then left into Abbey Road, and the bank is on your right.



Go along here and **take the second turning on the left**.



OK. Cross the road at the **traffic lights**, then go straight on and it's the **third turning on the right**. There's a cinema on the corner.

1 Cross out one word in each sentence.

- ▶ Turn right into ~~the~~ Duke Street.
 1 The bookshop is opposite of the hotel.
 2 Go straight on and keep to going.
 3 Is there a cinema near from here?
 4 It's on your left side.
 5 Turn to left and go straight on.
 6 It's the third road turning on the right.
 7 Where's the most nearest post office?

2 Is the pronunciation of the underlined letters the same or different? Write S or D.

Use the **app** to help you. Practise saying the words.

- ▶ here / there D
 1 cross / corner
 2 third / turning
 3 second / opposite
 ▶ here / near S
 4 straight / way
 5 right / opposite
 6 there / thanks

3 Make sentences from the words.

- ▶ turn / and / go / right / here / along Go along here and turn right.
 1 excuse / I / get / do / museum / the / me / how / to?
 2 here / left / along / and / turn / go
 3 post office / me / near / there / is / a / excuse / here?
 4 the / turning / it's / right / on / the / third
 5 way / the / excuse / to / know / me / do / station / the / you?
 6 traffic / the / lights / road / at / the / cross

4 Complete the phrases with a single word.

- ▶ turn left (OR right)
 1 Take the second
 2 Thanks very
 3 It's on the
 4 Excuse
 5 Cross the
 6 Keep
 7 Go straight
 8 Go along
 9 I want to go to the bank. Do you know the?
 10 Turn left at the traffic

5 Complete the dialogues. Use the maps to help you.

- 1 A Excuse ▶ me How do I (1) to the cinema from here?
 B OK. Go (2) on, and it's the second ... no, the third (3) on the (4)
 A Thanks very (5)
 B That's OK, no (6)
 2 A (1) me. Is there a post office (2) here?
 B Yes. Go (3) here and (4) the second (5) on the (6) The post office is (7) the bank.
 A (8) very much.
 B (9) OK. No problem.

6 Look at the map. Give directions.

- 1 A Excuse me. Do you know the way to the Bonham Hotel?
 YOU Yes. Go straight on, then
 2 A Excuse me. How do I get to the museum?
 YOU
 3 A Excuse me. Is there a post office near here?
 YOU



TEST YOURSELF