

## Warm Up



### Working out what the speaker will say next

We can collect information to work out what a speaker will say next, e.g.



I like holding my cat in my arms. It has long, soft fur.

What will the girl say next?

- ✓ It's cuddly.
- ✗ It's clever.
- ✗ My arms are long.

Listen and circle the correct letter.

1 What will Annie say next?

- A. It's cuddly.
- B. It's shy.
- C. It's clever.
- D. It's naughty.



2 What will Tom say next?

- A. It's naughty.
- B. It's friendly.
- C. It's cuddly.
- D. It's shy.



3 What will Jane say next?

- A. It's friendly.
- B. It's noisy.
- C. It's clever.
- D. It's naughty.

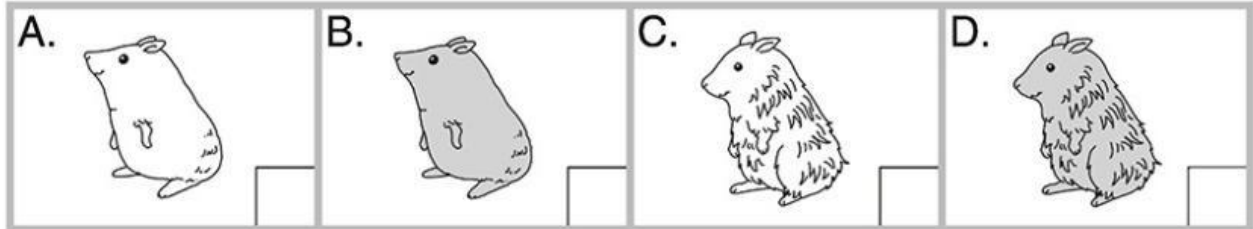


## Practice 1

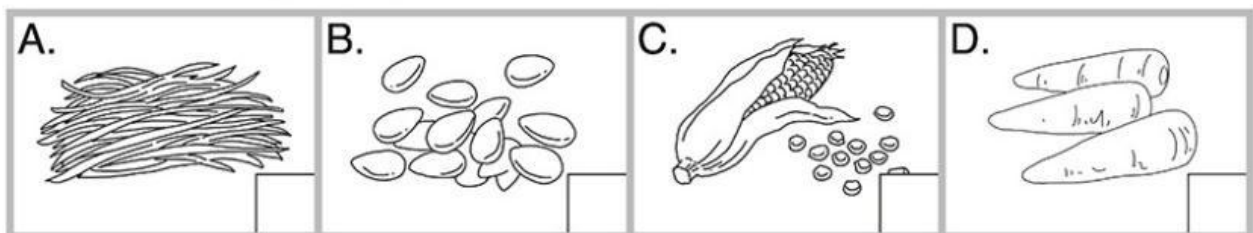
Ben is listening to a radio programme.

Listen to the programme. Tick (✓) the best answer.

1 Which is Angela's pet?



2 What does Angela's pet like best?



3 What will Angela say next?

- ☐ A. It's shy.  
☐ C. It's noisy.

- ☐ B. It's clever.  
☐ D. It's cuddly.

What does Angela say about her pet?



4 Why does David like his turtle? Because it is \_\_\_\_.

- ☐ A. quiet    ☐ B. clever    ☐ C. cuddly    ☐ D. friendly

5 David's dog is \_\_\_\_\_. (You can choose more than one answer.)

- ☐ A. big    ☐ B. black    ☐ C. noisy    ☐ D. naughty

6 What is Tony's pet?

