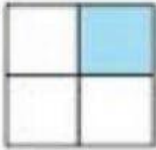
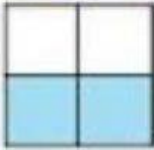
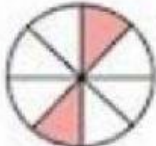
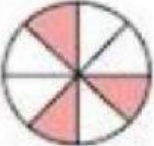


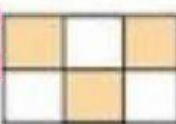
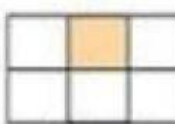


INSTRUCCIONES. Resuelve las siguientes sumas y restas de fracciones.

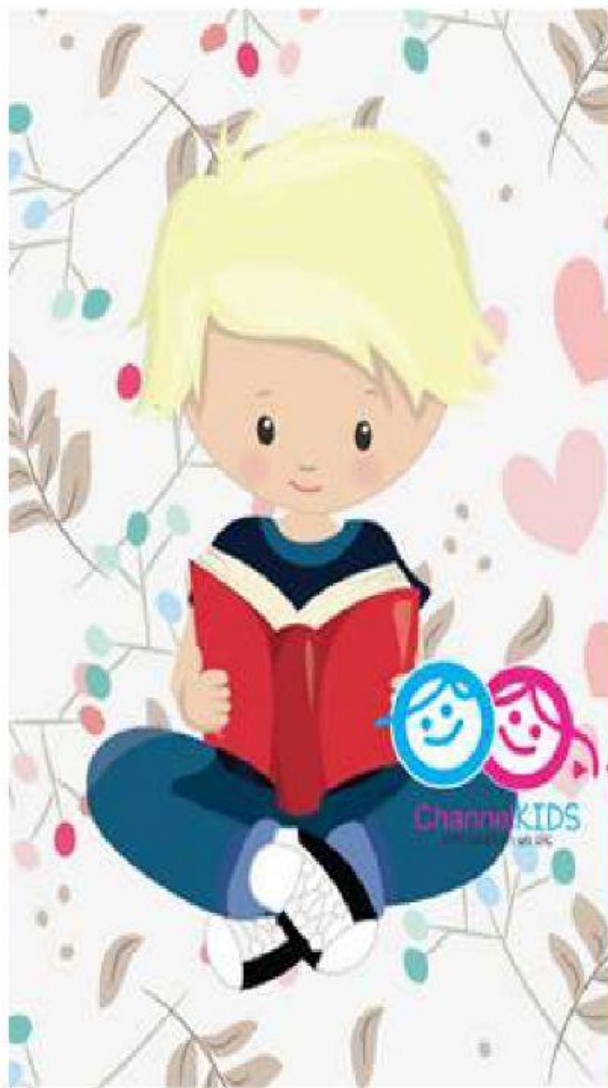
 $\frac{1}{4} + \frac{2}{4} = \frac{\quad}{\quad}$ 

 $\frac{2}{8} + \frac{3}{8} = \frac{\quad}{\quad}$ 

 $\frac{1}{4} + \frac{1}{4} = \frac{\quad}{\quad}$ 

 $\frac{3}{6} + \frac{1}{6} = \frac{\quad}{\quad}$ 

 $\frac{1}{3} + \frac{1}{3} = \frac{\quad}{\quad}$ 



	$\frac{2}{4}$	-		$\frac{1}{4}$	=	<div style="border: 1px solid black; width: 30px; height: 30px; margin: 0 auto;"></div>
	$\frac{3}{8}$			$\frac{2}{8}$	=	<div style="border: 1px solid black; width: 30px; height: 30px; margin: 0 auto;"></div>
	$\frac{2}{8}$	-		$\frac{1}{8}$	=	<div style="border: 1px solid black; width: 30px; height: 30px; margin: 0 auto;"></div>
	$\frac{3}{6}$	-		$\frac{1}{6}$	=	<div style="border: 1px solid black; width: 30px; height: 30px; margin: 0 auto;"></div>
	$\frac{3}{8}$	-		$\frac{2}{8}$	=	<div style="border: 1px solid black; width: 30px; height: 30px; margin: 0 auto;"></div>