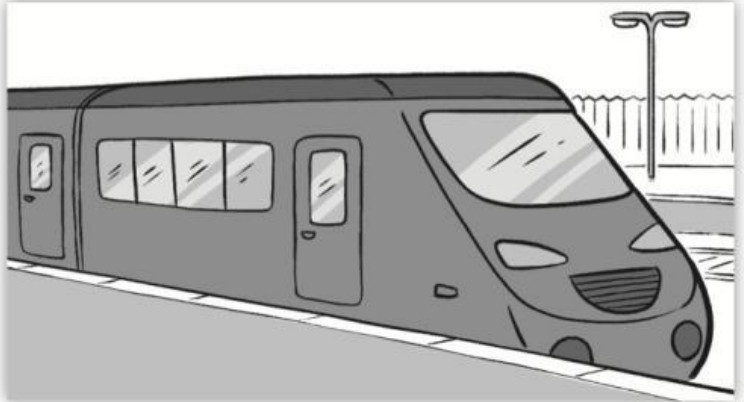


1 Complete the conversations with the words in the boxes.

arrive arrives does (x2) leave

- A: What time ¹ _____ your train
² _____?
- B: It leaves at two thirty.
- A: And when ³ _____ it
⁴ _____?
- B: It ⁵ _____ at 6 o'clock in the evening.



do does (x2) doesn't makes

- A: ⁶ _____ your brother study
 English, too?
- B: No, he ⁷ _____. He works at
 a hotel.
- A: What ⁸ _____ he ⁹ _____
 there?
- B: He ¹⁰ _____ breakfast and cleans
 the kitchens.



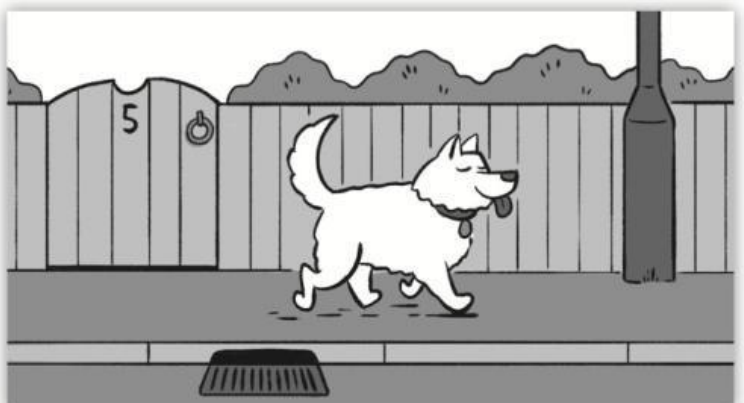
does (x2) finish use uses

- A: Excuse me, ¹¹ _____ the manager
¹² _____ the meeting room on
 Friday afternoons?
- B: Yes, she ¹³ _____. She usually
¹⁴ _____ it for a meeting.
- A: OK, what time does the meeting usually
¹⁵ _____?
- B: It usually finishes at 4 o'clock.



does (x2) leave live lives

- A: Oh no, that dog is on the road again!
- B: Where does it ¹⁶ _____?
- A: It ¹⁷ _____ in that white house.
 It's Dan's dog.
- B: How often does it ¹⁸ _____ its house?
- A: Every day at the moment!
- B: ¹⁹ _____ Dan know?
- A: Yes, he ²⁰ _____!



2 Work in pairs. Practise the conversations.