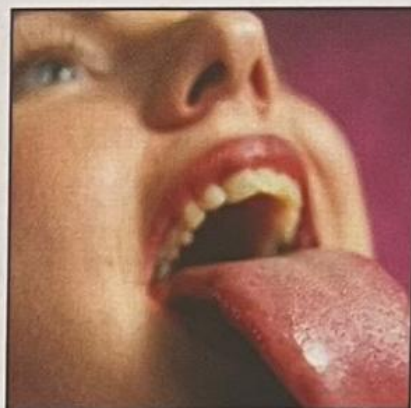


Body bits

Tongue diagnosis

- 1 *Zetsu shin* is used in traditional Chinese medicine. Practitioners examine the tongue in order to diagnose illness and to find out about the personality of the patient. Complete the text about *zetsu shin* using the words below.



disorder	balance	sign	state
condition	problems	effectively	indicates
thinking	aggressive		

Colour

Blood _____¹ are associated with a white tongue. Yellow _____² a disordered liver and gallbladder. Blue or purple shows up a _____³ in the digestive system. Purple on the underside shows the immune system is not working _____⁴. A dark red tongue can be a _____⁵ of inflammation or ulcers in the body.

Movement

The flexibility of the tongue shows the general _____⁶ of the digestive system.

Width

A wide tongue is good, for it shows a physical and psychological _____⁷. A narrow tongue indicates sharp _____⁸.

Tip

A rounded tip shows a _____⁹ of good physical and mental health. People whose tongues have a pointed tip have _____¹⁰ personalities.