

## Growing with Values

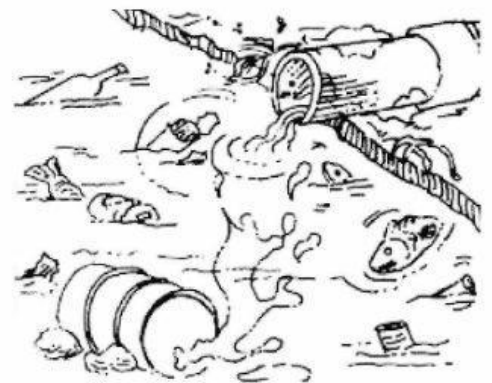
### Caring for God's Creation

The world we live in is a beautiful place. It is also a fragile place because its resources can be depleted or destroyed. If human beings do not care for the environment in which they live, the earth will not be able to sustain itself for future generation. Pollution is a major problem all over the world. It makes people, other animals, and plants sick or even kills them. Pollution is contamination by a chemical or other agent that harms the environment. The three types are air, water, and land pollution.

**Water** pollution is the contamination of lakes, caused by human activities. It can be harmful to organisms and plants which live in the water. Water pollution occurs when wastes are discharged from wastewater treatment plants. Other known causes are factory wastes or leaking underground tanks. The polluted water can cause **cholera and typhoid fever**. Water pollution has led to the deaths of more than 14,000 people daily.

**Land** pollution is the destruction of the earth's land surfaces. It is often caused by human activities such as careless disposal of wastes, over-mining of minerals and wrong use of land for planting. All these will affect our health in the long run. They will lead to all kinds of diseases such as cancer, heart disease, and breathing problems. Land pollution also brings about natural disasters such as flash floods and landslides.

**Air** pollution is also the result of human activity where chemicals and other dangerous materials are released into the air. This happens through the release of carbon monoxide gas from exhaust pipes of motor vehicles. Other gases such as sulphur oxides are released from the burning of coal and oil. High air pollution levels can cause damage to the environment. It also brings discomfort to humans and other living organisms. In the long term, air pollution can cause serious breathing problems, lung cancer, and heart disease.



Date: \_\_\_\_\_

Based on the passage, answer the following questions.

1. How many ways is the environment being polluted? [1]  
A. Two                      C. Four                      B. Three                      D. Five
2. What type of diseases caused by polluted water? [1]  
A. Cholera and typhoid fever                      B. Breathing problems and cancer  
C. Heart disease and typhoid fever                      D. Cholera and breathing problems
3. The word **It** in the passage refers to the [1]  
A. diseases                      B. land pollution                      C. air pollution                      D. water pollution
4. Which of the following causes land pollution? [1]  
A. Toxic factory wastes                      B. Over-mining of minerals  
C. Burning of coal and oil                      D. Leaking underground tanks
5. From the passage, we know that air pollution [1]  
A. bring about typhoid fever                      B. happens when lands are being destroyed  
C. takes place when lakes are contaminated                      D. happens when exhaust pipes release carbon monoxide

6. Complete the cause and effect. [1]

**Cause:** If we do not take care of the earth

**Effect:**

\_\_\_\_\_