

1.
What is the **oldest layer** formed in the sedimentary rock shown in the adjacent figure?

- A. Layer 1
- B. Layer 2
- C. Layer 3
- D. Layer 4

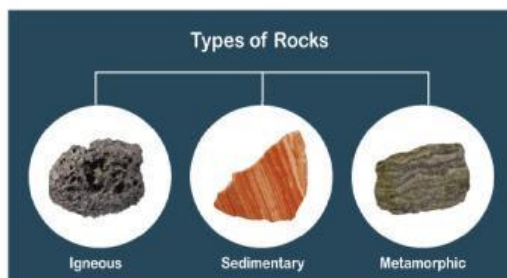


2.
Any method of determining whether an object is **older or younger** than other objects is called....

- A. absolute dating
- B. relative dating
- C. radiometric dating
- D. all the above

3.
What **type of rocks** can scientists determine their absolute age?

- A. Sedimentary rocks
- B. Metamorphic rocks
- C. Igneous rocks
- D. Any type of rocks



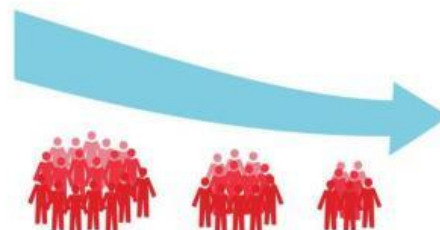
4.
In one region, when the **birth rate is greater than the death rate**, the population will...

- A. increase.
- B. decrease.
- C. stay the same.
- D. decrease then increase.



5.
Which of the following **causes a decrease in population**?

- A. Increase in birth rate
- B. Decrease in death rate
- C. Improvements in medical care
- D. High immigration out of the area



6.

In general, how are **natural resources and population size** related?

- A. Natural resource use decreases as population size increases.
- B. The rate of natural resource use stays the same as population size increases.
- C. As population size increases, more natural resources become available.
- D. Population size grows in places where more natural resources are available.

Part B: Read the questions carefully and answer.

1.

Classify the following resources as renewable or non-renewable in the table below.

Fossil fuels – Wind – Water – Copper

Renewable resources	Non-renewable resources

2.

Use the table below to calculate **per capita consumption** of water at UAE in 2020.

Population size	Total water usage in 2020 (m ³ /day)
9,000,000	6,000,000

$$\text{Per capita consumption} = \frac{\text{total resource consumption}}{\text{Population size}}$$

= _____ =

3.

Write **A** next to statements that describe **absolute age**, and **R** next to those that describe **relative age**.

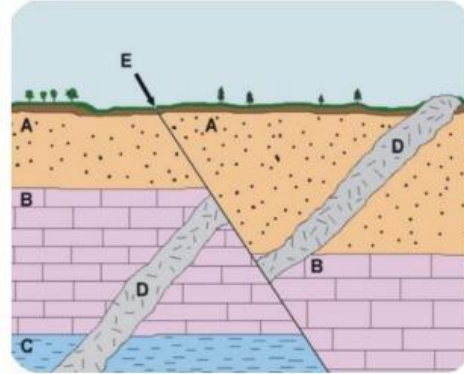
	I am 14 years old
	I am younger than my brother
	The boy's school is older than the girl's school
	My cat is 3 years old

4.

The diagram shows rock layers that are cut by a **fault** and one body of rock (Rock D).

What are the relative ages of the features in order of **oldest** to **youngest**?

The oldest	
The youngest	E



B5.

The **environment** where the fossil shown in the figure was found is a **lake**.

- A. True
- B. False

