



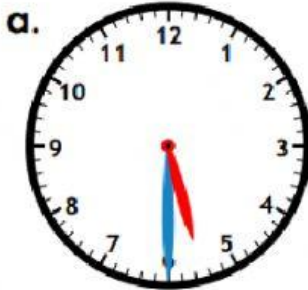
Name: _____

Year 4: _____

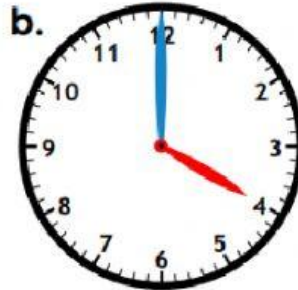
Maths quiz 2: Intermediate.

Question 1: Measurement -Time

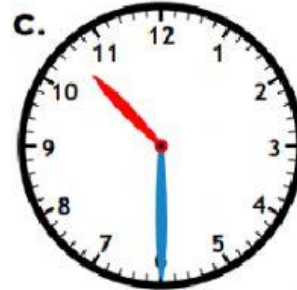
a. Tell the time on the following clock's by **choosing the correct time** from the given options. (To the hour including half-past the hour.) (3 marks)



Six o'clock
Half past five.

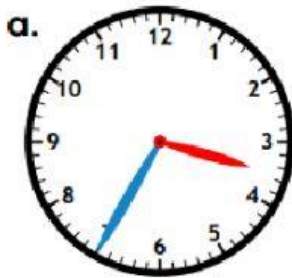


Four o'clock
Twelve o'clock

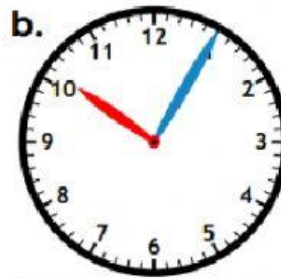


Half past ten.
Half past eleven.

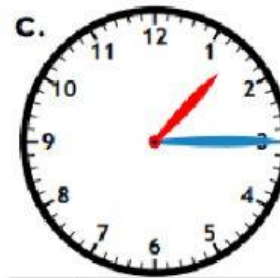
b. Tell the time on the following clock's by **choosing the correct time** from the given options. (to five minutes, including quarter past/to the hour.) (3 Marks)



Twenty-five minutes to four.
Twenty minutes to four.

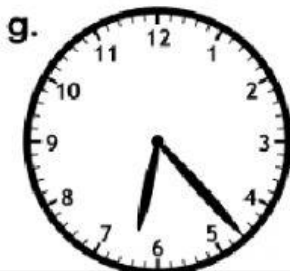


Ten o'clock.
Five minutes past ten.



Quarter past one.
Five minutes past three.

c. Tell the time on the following clock's by **choosing the correct time** from the given options. (to the minute.) (3 Marks)



Twenty-one minutes past six.
Twenty-three minutes past six.



Eighteen-minutes past five.
Eighteen-minutes to five.



Eighteen minutes to five.
Sixteen minutes to five.

d. Choose the correct answer for each statement by dragging and dropping the correct answer to complete the sentence. (4 Marks)

1. There are _____ seconds in a minute.

12

60

2. There are _____ days in a month.

28-31

45-48

3. There are _____ days in a year.

365

366

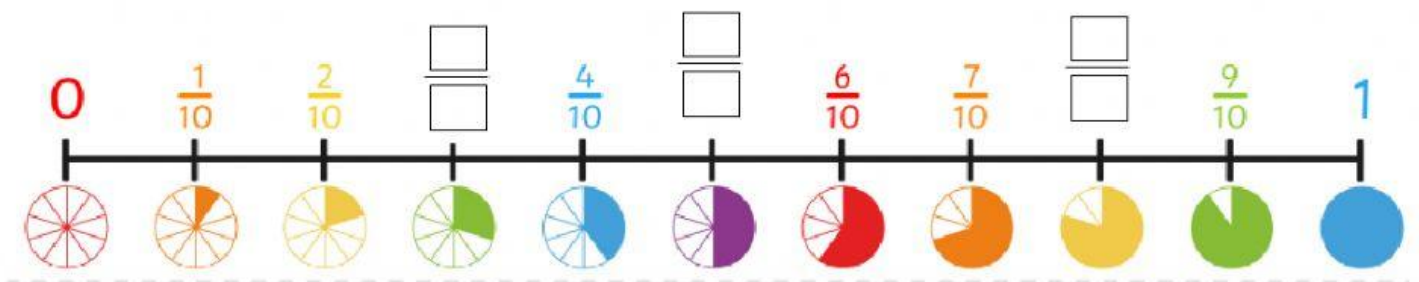
4. There are _____ days in a leap year.

365

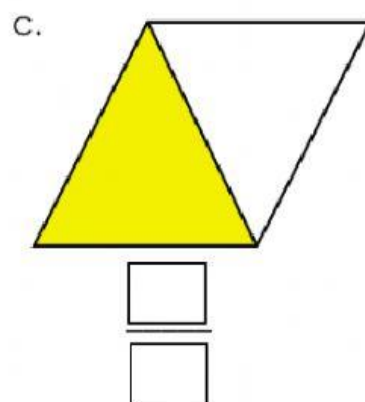
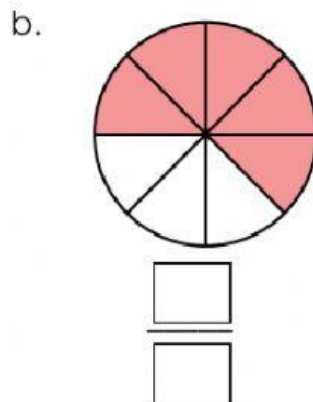
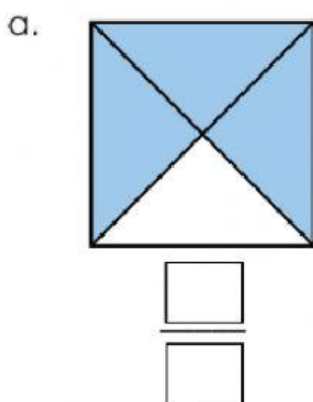
366

Question 2: Number-Fractions

a. Count in tenths. Fill in the missing fractions on the fraction line. (3 marks)

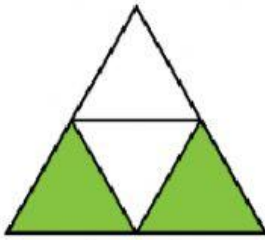


b. Tell what fraction of the shape is shaded. (3 Marks)

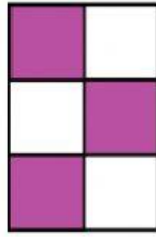


b. Tell what fraction of the shape **is NOT shaded.** (3 Marks)

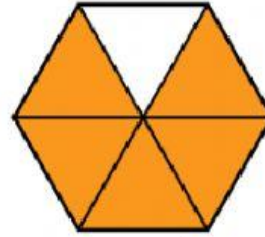
d.



e.



f.



c. Recognise and use fractions as numbers. **Use the two steps to find the answer of these sums.** (3 marks)

$$\begin{aligned} & \frac{4}{10} \text{ of } 20 \\ & = 2 \div 1 = 2 \quad (\text{Step 1}) \\ & = 2 \times 4 = 8 \quad (\text{Step 2}) \end{aligned}$$

a. $\frac{5}{10}$ of 30

--

b. $\frac{4}{10}$ of 50

--

c. $\frac{2}{10}$ of 50

--

d. Recognise and show equivalent fractions. **Select all the fractions that is equivalent to $\frac{2}{4}$** (3 Marks)

1							
$\frac{1}{2}$				$\frac{1}{2}$			
$\frac{1}{3}$		$\frac{1}{3}$		$\frac{1}{3}$			
$\frac{1}{4}$		$\frac{1}{4}$		$\frac{1}{4}$		$\frac{1}{4}$	
$\frac{1}{5}$	$\frac{1}{5}$	$\frac{1}{5}$	$\frac{1}{5}$	$\frac{1}{5}$	$\frac{1}{5}$		
$\frac{1}{6}$	$\frac{1}{6}$	$\frac{1}{6}$	$\frac{1}{6}$	$\frac{1}{6}$	$\frac{1}{6}$	$\frac{1}{6}$	
$\frac{1}{8}$	$\frac{1}{8}$	$\frac{1}{8}$	$\frac{1}{8}$	$\frac{1}{8}$	$\frac{1}{8}$	$\frac{1}{8}$	$\frac{1}{8}$