

Anglo-Chinese School (Junior)



END-OF-YEAR EXAMINATION (2023)

PRIMARY 4
SCIENCE
BOOKLET A

27 October 2023

Total Time for Booklet A and Booklet B : 1 h 45 min

Name: _____ () Class: 4.()

INSTRUCTIONS TO CANDIDATES

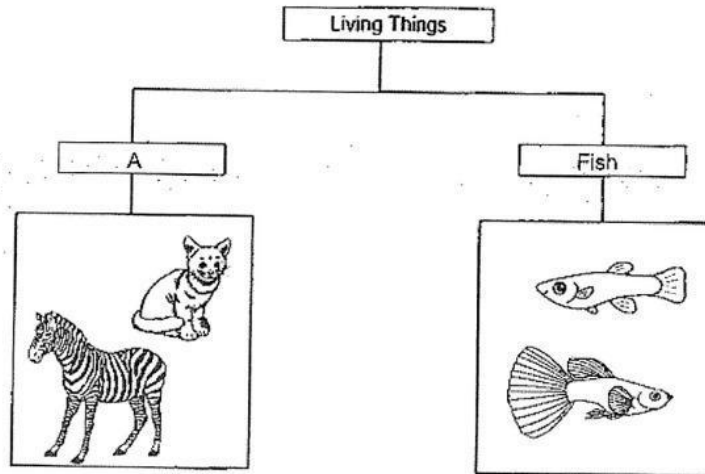
1. Do not turn over this page until you are told to do so.
2. Follow all instructions carefully.
3. Answer all questions.
4. Use a 2B pencil to shade your answers on the Optical Answer Sheet (OAS).

This booklet consists of 17 printed pages.

For each question from 1 to 28, four options are given. One of them is the correct answer. Make your choice (1, 2, 3 or 4). Shade your answer on the Optical Answer Sheet.

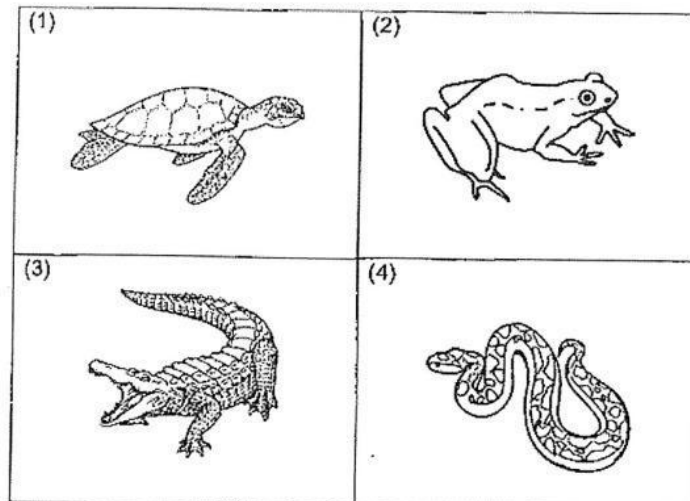
(56 marks)

1. The table shows how some living things can be grouped.

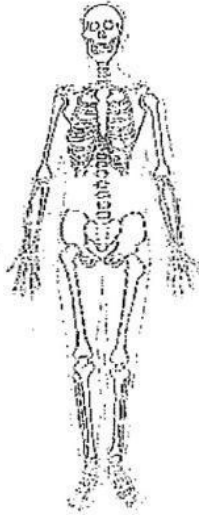


Which of the following is the most suitable heading for group A?

- (1) Birds
 - (2) Insects
 - (3) Mammals
 - (4) Amphibians
2. Which animal is NOT a reptile?



3. Which organ system is shown in the diagram?

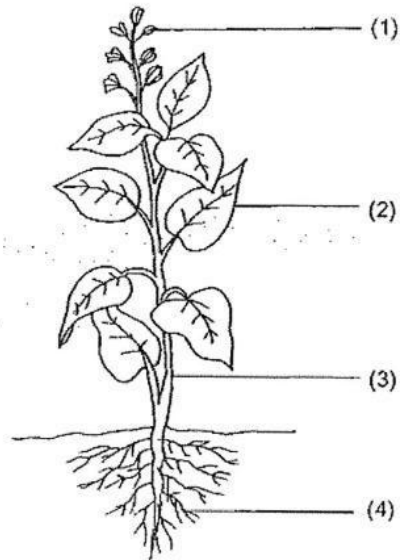


- (1) skeletal system
- (2) muscular system
- (3) circulatory system
- (4) respiratory system

4. Which of the following is **NOT** a source of heat?

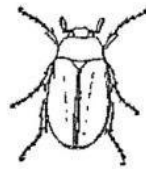
- (1) The Sun
- (2) A lighted lamp
- (3) A candle flame
- (4) A woollen jacket

5. Which part, (1), (2), (3) or (4), supports the plant?



6. Which animal has a 4-stage life cycle?

(1)



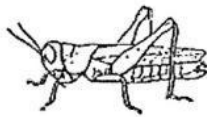
beetle

(2)



chicken

(3)



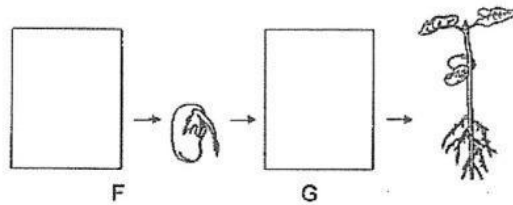
grasshopper

(4)

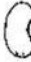









frog

7. The diagram shows the growth of a young plant with two missing stages, F and G.



Which of the following shows the correct stages for F and G?

	F	G
(1)		
(2)		
(3)		
(4)		

8. A magnet was brought near a plastic block as shown.



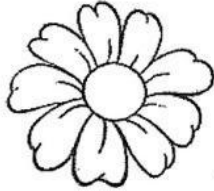
What will happen to the plastic block?

- (1) It will move up.
- (2) It will not move.
- (3) It will move to the left.
- (4) It will move to the right.

9. Which of the following is a source of light?

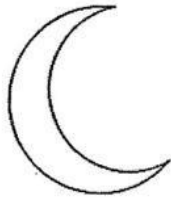
(1) a flower

(2) a star in the sky



(3) the moon

(4) an apple



10. Danny places a metal spoon in a cup of hot coffee.



a cup of hot coffee

The spoon becomes hot after a while.

Which of the following explains this?

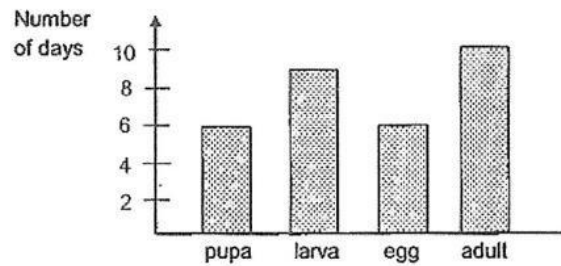
- (1) The cup loses heat to the hot coffee.
- (2) The spoon loses heat to the hot coffee.
- (3) The hot coffee gains heat from the spoon.
- (4) The spoon gains heat from the hot coffee.

11. Which of the following two statements correctly describe the circulatory system?

- A It absorbs digested food.
- B It breaks down food into simple substances.
- C It is made up of the heart, blood and blood vessels.
- D It works with the muscular system to remove air from the body.

- (1) A and B
- (2) A and C
- (3) B and C
- (4) B and D

12. The graph shows the number of days an insect remains at each stage of its life cycle.



Which of the following conclusions can be made from the graph?

- (1) The pupa moults several times.
- (2) The insect is a pest to farmers for only 6 days.
- (3) The egg, larva and pupa live in water but the adult lives on land.
- (4) The insect takes 15 days to become an adult after the egg hatches.