

BODY SYSTEMS

GRADE 7 BIOLOGY TEST

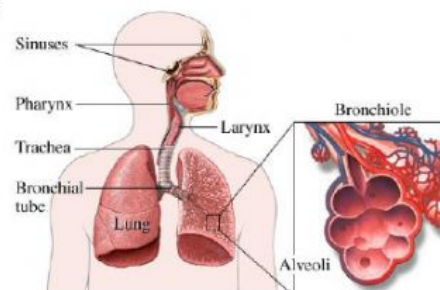
Part 1 Digestive System: Choose the correct answer

1. All animals digest food the same way, by digesting inside their cells.
a. True b. False
2. Animals that use intracellular digestion to get energy eat which food below?
a. meat b. plants c. microorganisms d. both a and b
3. Look at the animal's mouth in the picture.
What type of animal is this?
a. Herbivore b. carnivore
c. omnivore d. filter feeder
4. The animal in the picture has a digestive tract with two openings. This type of system is more efficient at getting energy from food
a. True c. False



Part 2 Respiratory System: Choose the correct answer

5. Choose all the organs that help animals exchange gases with the environment:
a. skin b. gills c. liver d. heart e. lungs f. bladder
6. Oxygen is carried by the _____ of animals and is a key for the cell to make energy. Oxygen can travel across cell membranes by _____
a. muscle tissue... osmosis b. blood... diffusion
c. air... attaching to food d. kidneys urine.
7. Human lungs have many small air sacs in order to
a. collect CO_2 from the environment
b. digest food
c. collect more O_2 for energy
d. be close to other organs



Part 3 Circulatory System: Choose the correct answer

8. Humans have a 3 chambered heart and pump oxygen rich blood from the left atrium to the rest of the body.

True

False

9. Oxygen poor blood gets pumped from the left ventricle to the lungs to collect more oxygen.

True

False

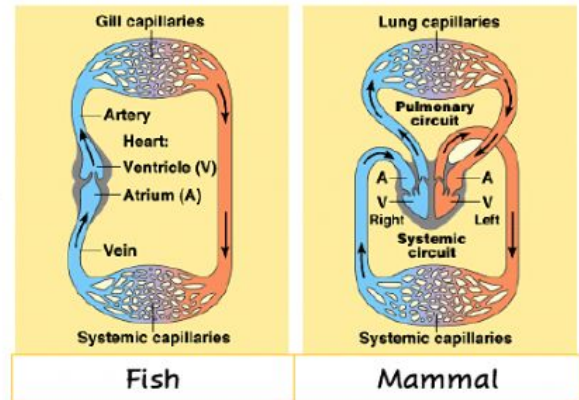
10. Unlike mammals, animals with open circulatory systems, like shrimp, do not pump blood from their heart.

True

False

11. Choose all the true statements:

- a. A fish can only pump oxygen-poor blood from its heart. A mammal can pump oxygen rich and oxygen-poor blood from its heart.
- b. A fish pumps blood using an open circulatory system
- c. Monkeys use the left side of their heart to pump oxygen-rich blood to their bodies
- d. Monkeys use their blood to drop off CO_2 in their lungs and collect O_2 .



Part 4 Excretory System: Choose the correct answer

12. The color of your urine can indicate the health of your kidneys.

a. True

b. False

13. Vertebrates have excretory systems to get rid of nitrogen-containing waste, excess salt, water, and CO_2

a. True

b. False

