

Identify Key Features of Quadratic Equations Interactive Worksheet

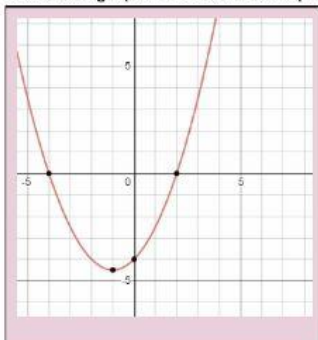
$$y = (x + 2)(x - 4)$$

$$y = (x - 2)^2 - 4$$

$$y = \frac{1}{2}x^2 + x - 4$$

$$y = -(x + 2)^2 + 4$$

Match the graphs to the correct equations



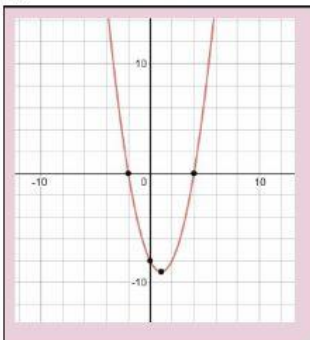
Name the form:

x-intercept(s):

y-intercept(s):

vertex:

Axis of symmetry:



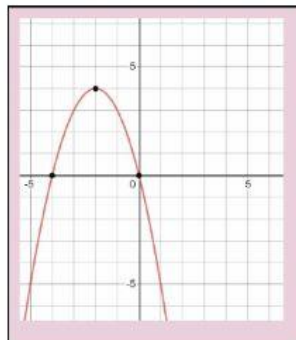
Name the form:

x-intercept(s):

y-intercept(s):

vertex:

Axis of symmetry:



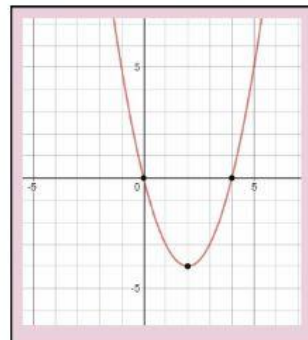
Name the form:

x-intercept(s):

y-intercept(s):

vertex:

Axis of symmetry:



Name the form:

x-intercept(s):

y-intercept(s):

vertex:

Axis of symmetry: