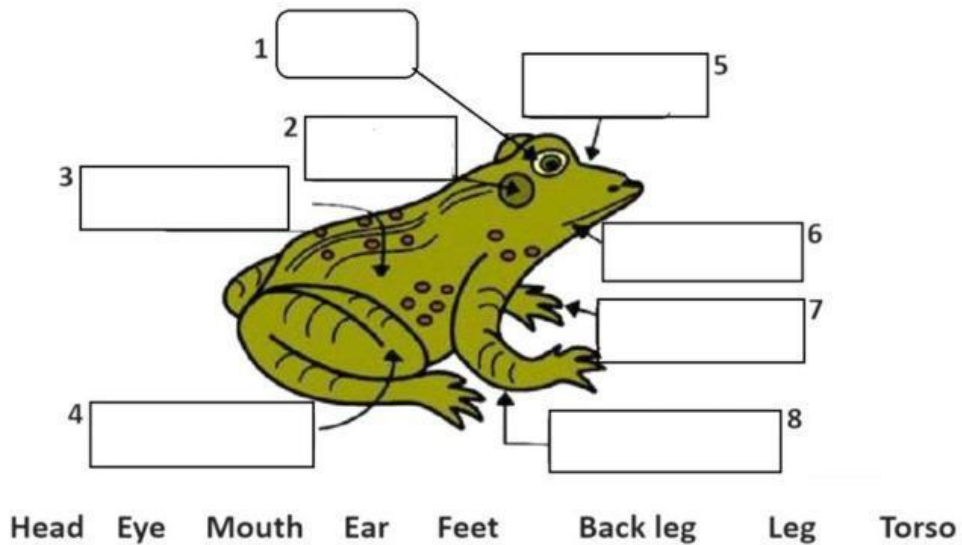


LESSON 8. AMPHIBIANS ARE VERTEBRATES

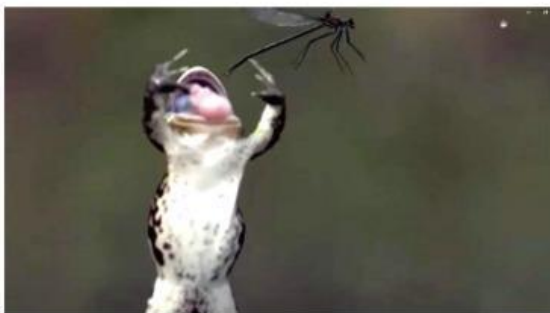
1. PARTS OF A FROG.



2. ALL ABOUT THE FROG.



1. Download ARTIVIVE app
2. Open and scan the picture to watch.

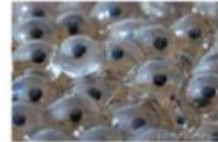


3. FILL IN THE BLANKS.

carnivore wet backbone oviparous Animal Kingdom

- a. A frog is an animal. It belongs to the _____.
- b. A frog is a vertebrate, it has got a _____.
- c. A frog is an amphibian, it has got _____ skin.
- d. A frog lays eggs. It is an _____ animal.
- e. A frog eats insects, such as flies and mosquitoes. It is a _____.

4. MATCHING.



adult frog

tadpole

eggs

froglet

5. WORDSEARCH.

G	U	M	R	S	W	I	M	M	I	N	G	H	B	L	N	Z
T	H	J	S	C	I	T	F	L	E	K	Z	Y	M	N	K	A
O	D	P	Q	V	H	R	J	W	E	U	N	G	Y	T	E	T
Y	S	Q	B	Z	X	U	S	K	R	S	S	J	U	O	O	X
Y	L	Q	P	Y	Q	Z	B	E	C	S	U	M	M	E	K	B
U	Z	O	N	Y	V	Z	N	W	A	T	E	R	N	S	V	J
P	M	H	L	C	U	N	E	C	K	M	Z	A	A	T	V	G
K	B	G	T	E	E	F	D	E	B	B	E	W	A	O	P	O
X	Z	W	Q	U	Y	L	T	I	O	C	A	O	B	N	H	R
K	X	R	W	T	E	U	N	I	K	S	P	Y	G	G	T	F
C	P	F	K	F	O	R	E	L	E	G	S	W	Y	U	U	H
M	G	T	I	M	M	H	J	D	X	D	Y	P	R	E	O	J
K	N	U	R	T	Z	Z	W	O	L	L	A	W	S	V	M	Q
Y	X	K	X	M	P	I	S	Q	A	F	S	Y	S	E	Y	E
C	S	O	T	M	E	V	F	B	V	M	L	E	C	B	T	Q
T	E	G	M	I	N	A	I	B	I	H	P	M	A	I	N	J
P	O	Q	W	H	I	N	D	L	E	G	S	U	S	T	W	P

amphibian

hind legs

swallow

trunk

eyes

mouth

swimming

water

forelegs

neck

toes

webbed feet

frog

skin

tongue

VIDEOS