

My name is: _____

WORKSHEET

FFs1-UNIT 13



Teacher's feedbacks

Task 1: Use **can/can't** and the verbs from the picture to complete the sentences:

<p>1 jump</p> 	<p>2 swim</p> 	<p>3 write</p> 	<p>4 swim</p> 
<p>5 sing</p> 	<p>6 play</p> 	<p>7 see</p> 	<p>8 fly</p> 

Example: 1) He **can't** jump.

5) They _____

2) It _____

6) She _____

3) She _____

7) He _____

4) He _____

8) They _____

Task 2: Read and write **Yes/No**:



This is a bat. It's got wings and it can fly. The bat sleeps in the day and it flies at night. It can see at night. It can hear very well, too.



A dolphin can swim and it can jump. It can hear with its ears and it can hear with its mouth, too! A dolphin plays lots of games.



An elephant is a very big animal. It can hear with its ears and it can hear with its nose, too! It can swim and it can run very fast. But it can't jump!

- 1 The bat has got wings.
- 2 It flies in the day.
- 3 The dolphin can jump.
- 4 It doesn't play games.
- 5 The elephant can hear with its mouth.
- 6 It is a very big animal.

Task 3: Order the words to make correct sentence:

can't You the guitar. play



the book. can My sister read



cook. daddy My can



can't parents My exercise.



draw. My can grandma



My can't paint. brother



build can a tower. The baby



can My run. dog



Task 4: Listen and tick the box. There is one example:

Which is Kim's bag?



A ☒



B ☐

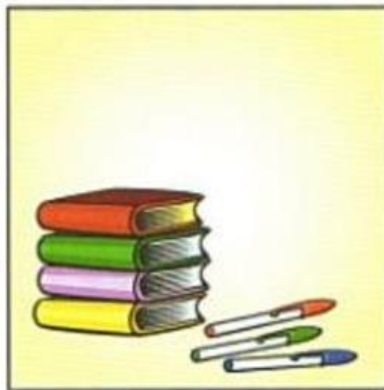


C ☐

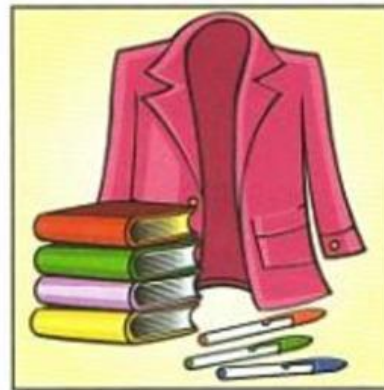
1 What is Anna taking to school?



A ☐



B ☐

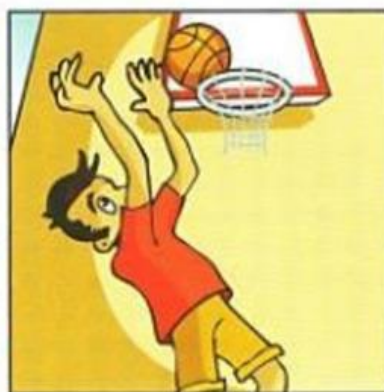


C ☐

2 Which is Bill's dad?



A ☐



B ☐



C ☐

3 What would Sam like to do?



A ☐



B ☐

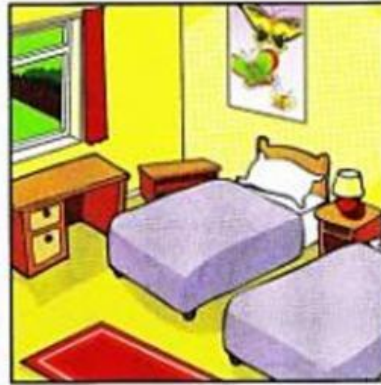


C ☐

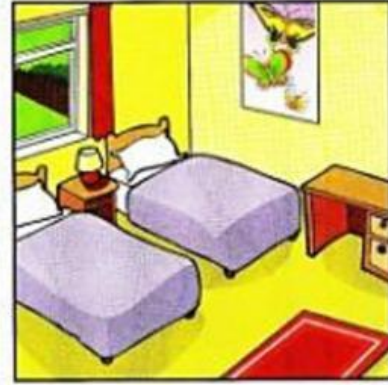
4 Which is Jill's bedroom?



A ☐

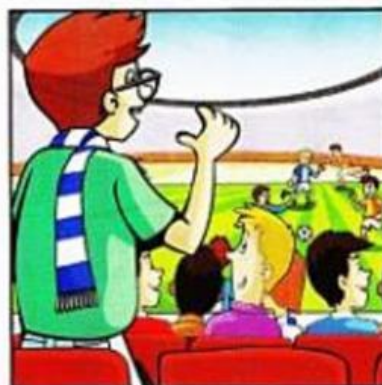


B ☐



C ☐

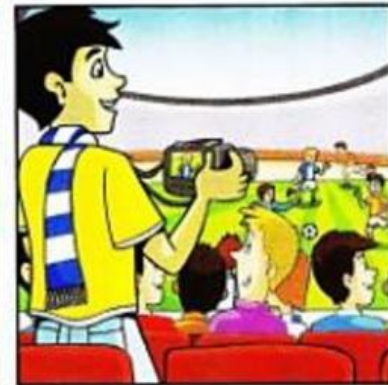
5 Which is Nick's brother?



A ☐



B ☐



C ☐