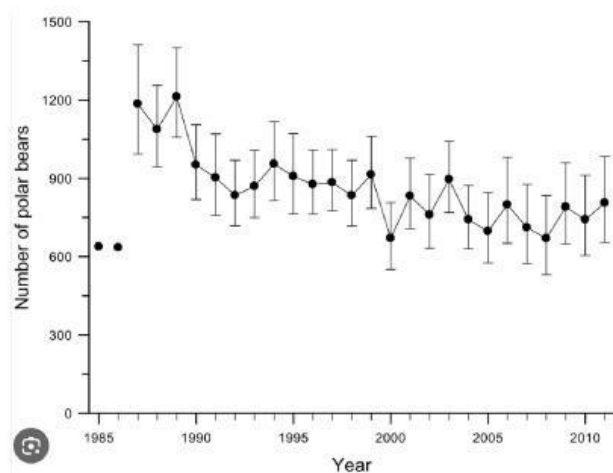


Biology MCAS Work

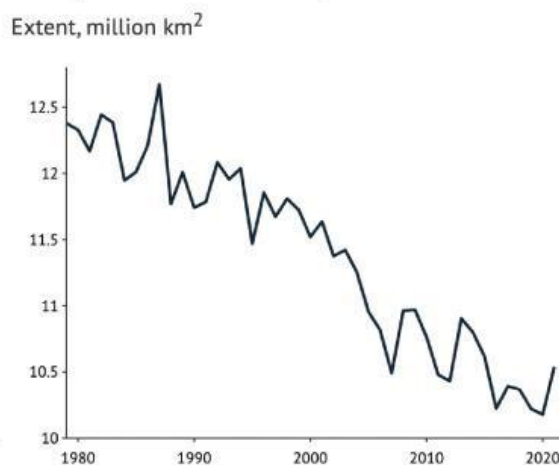
Name:

Instructions: Below there are two graphs that contain information about Polar Bear Populations and Changes in Arctic Sea Ice (this is where Polar Bears live). Use the data from the graphs to identify the relationship between the animal (polar bear) and the environmental change (loss of habitat).

Polar Bear Population, 1987 - 2011



Changes in Arctic Sea Ice, 1980 - 2022



Do you see a pattern, what do you think is happening? In your own words talk about the relationship between the Polar Population and their Habitat (Arctic Sea Ice) over time.