



Introduction - Dr Who theme



Listen to the opening credits of the Dr Who theme arranged by Delia Derbyshire
The theme is made up of 2 main musical ideas. What are they?

Now listen to three versions of the theme and fill in the table as you listen.

	Version 1	Version 2	Version 3
How does it make you feel?			
What instruments can you hear?			
What sounds/ effects can you hear?			
What are the similarities and differences?			
Which is your favourite and why?			

Delia Derbyshire used only 'found sounds' for her version of the theme – she chose objects rather than conventional instruments and instead of playing them live she recorded them and manipulated the recordings. You are going to have a go at creating and manipulating some 'found sounds' as well as creating your own melody.

Part 1 – Compose your own Dr Who melody

- In pairs, write 2 lines each of a tune to play alongside the Dr Who bass line.
- Follow the chord progression and make sure the notes of your theme fit the chord for that bar.
- Make sure each bar adds up to 4 beats and write your theme down using notation or letter names. Follow the guide opposite – keep it simple! →
- Learn to play it on the keyboard.

4 beats 3 beats 2 beats 1 beat

A B C D E F G A B C D E F G

Chords used		
Em	G	Bm
EGB	GBD	BDF#

When you have written your theme, practise your theme ready to record into [BandLab](#). Make sure you practise it along with the backing track.

Person 1 –
Write your
tune here

Em Em G Em Em G

Person 1 –
Write your
tune here

Em Em G Em Em G

Person 2 –
Write your
tune here

Em Bm Em Bm

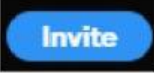
Person 2 –
Write your
tune here

Em G Bm Em Bm

Part 2 - Create your own arrangement on BandLab

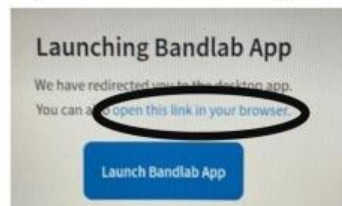
1. In pairs, person 1 should open up Bandlab <https://www.bandlab.com/>
2.  a new project.
3. Change project key to **E minor** and beats per minute (bpm) to **130**

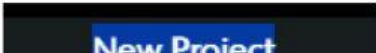


4. Person 1  your partner & teacher. Click 'invite others' then open a new email and paste the link, then send to your partner & teacher.

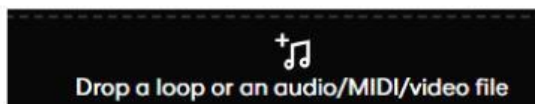


5. Person 2 go to your email and click 'open this link in your browser'. DO NOT try and launch the band lab app.



6. You are now collaborating on the same project. Give your project a title by clicking  at the top middle and change the name.

7. Person 1 - Import Dr Who bass part from google classroom assignment.



8. Person 2 - add a virtual instrument track for you to be able to input your tune on a keyboard.



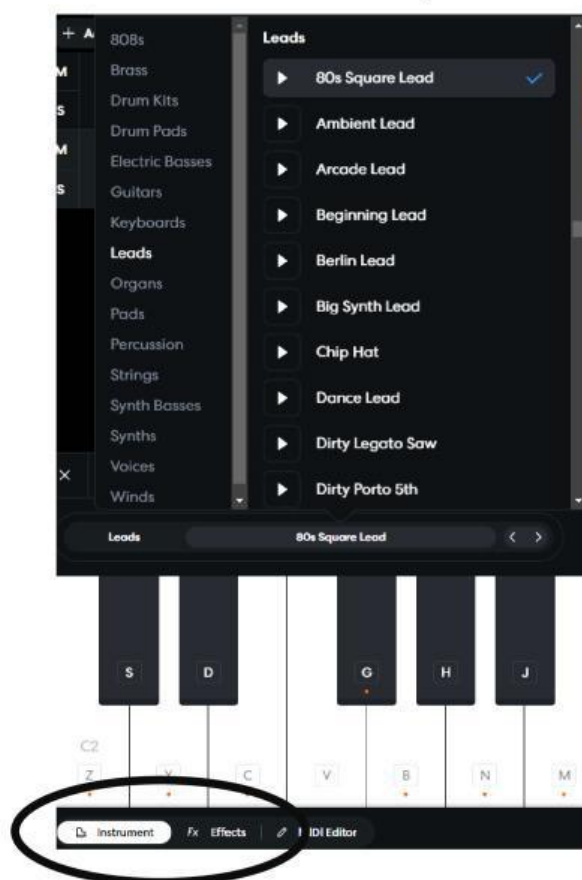
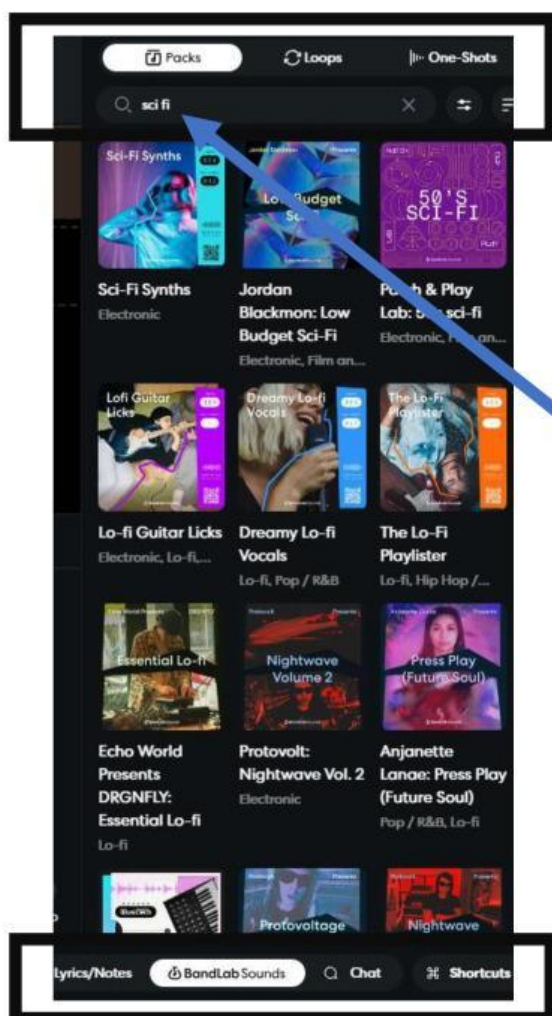
9. To start recording your tune, you need to connect the USB cable from the keyboard to your chromebook. Choose between you who will record in the tune. Before recording, practise playing ► your theme alongside the Dr Who bass line.



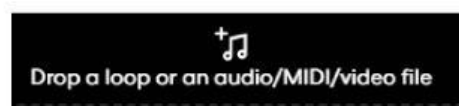
10. When you are ready to record, click the red circle record button. You will hear 4 clicks and then you start. Re-record if you need to.
11. Once you have recorded your theme, change the sound of your theme, using different 'Instruments' and 'Effects' (at the bottom LHS – see below)

Possible instrs.-'80s square lead, arcade lead, big synth lead/ etc. Effects could be reverb, chorus, phaser etc. Experiment and listen to these

12. Now add other loops and sound effects – e.g. Sci Fi packs/ loops/ one shots.




Type in 'sci-fi' in the search box. You can click on any of the icons to play the sounds. Drag the sound to the place where you want it to appear.



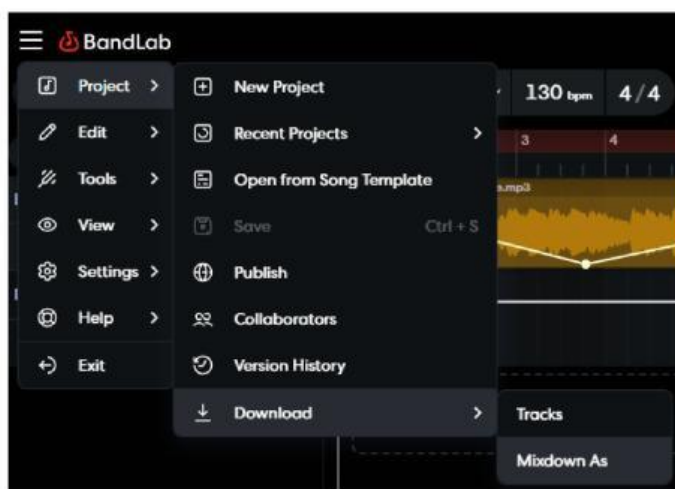
You can manipulate the sounds using different effects, as you did with the instrument.

'FOUND SOUNDS'

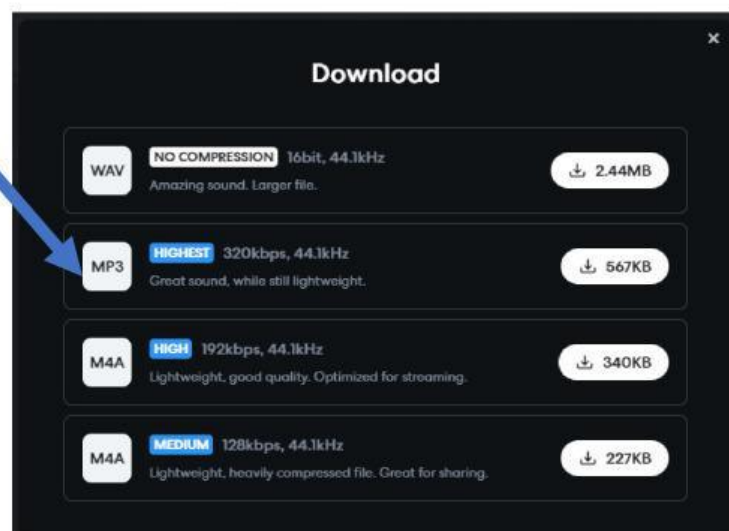
13. Record your own sound effects ('found sounds') and input these into BandLab at appropriate points. The sounds can be 'found sounds' using everyday objects, real instruments, body percussion, vocal sounds etc.
14. Manipulate the sounds using effects to create a suitable Sc-Fi sound scape. Experiment with panning, fade etc using the automation button. 



15. Keep saving your work and layering different sounds, loops etc. Be creative!
16. When you are finished, go to the 'Mixdown As' button (shown below)



17. And save as MP3



Part 3 - Evaluation

Part 1 - Composing the theme		
My comments		Teacher comments
Did the notes fit the chords?		
Did the rhythms make sense?		
Was I able to play my part of the theme?		
How well did we work together?		
What could I/ we have done to improve this?		

Part 2 - Creating the arrangement in BandLab		
My comments		Teacher comments
Did we manage to play in the theme we composed?		
Were we able to input and sync audio/ loops?		
Did we manage to record 'found sounds'?		
How well did we work together?		
What could I/ we have done to improve this?		