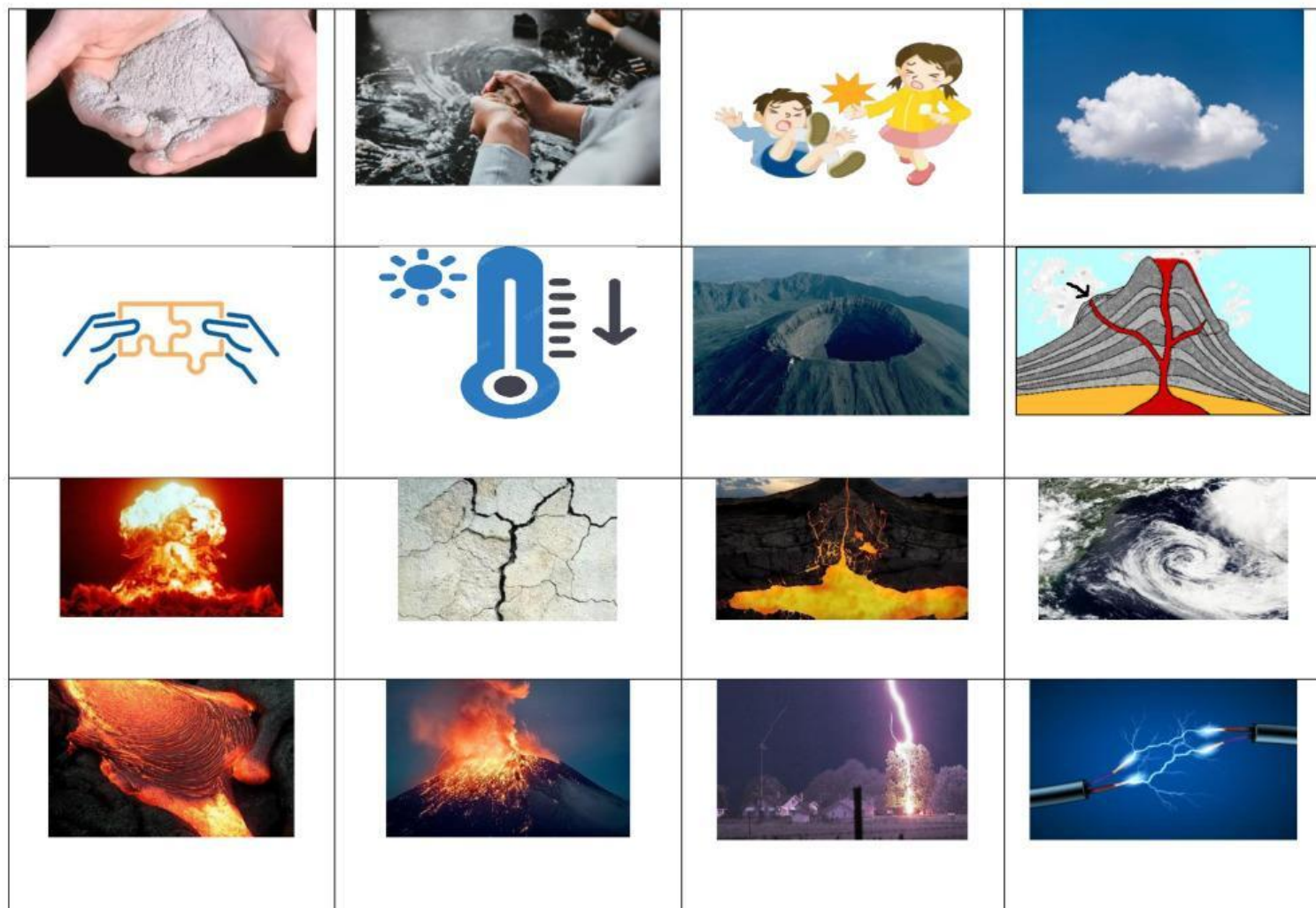


## UNIT 7 NATURE'S POWER 2

1. Look and write the words in the box under the corresponding pictures:

crater	storm	cool down	volcanic eruption
cloud	vent	lava	form
bump into	connect	electricity	magma
explode	crack	strike	ash



Write True or False next to the statements:

When a volcano erupts, the river of lava can travel at 450 km per hour. \_\_\_\_\_

If volcanoes erupt near water, they can cause a tsunami. \_\_\_\_\_

The temperature of volcanic lava is extremely hot- about 200 degrees Celsius. \_\_\_\_\_

A volcanic eruption can throw ash 3 km into the air. \_\_\_\_\_

2. Complete the story with the correct past simple or past continuous form of the verbs.

Two weeks ago, I 1..... (go) to my grandma's house to visit her. When I 2..... (arrive) she 3..... (sit) at her computer. She 4..... (want) to buy some new shoes online, so she 5..... (ask) me to help her. While we 6..... (search) for some good websites, a notice suddenly 7..... (appear) on her screen. It said that she was the winner of a competition and it asked for her bank details! But I 8..... (know) that it wasn't true. Someone 9..... (try) to steal her money online. I 10..... (tell) her immediately to close the notice. I was really glad that I was there to help her!

**3. Write a story.** Your story must begin with the following sentence:

When I woke up and saw the weather, I couldn't believe it!

[illegible]