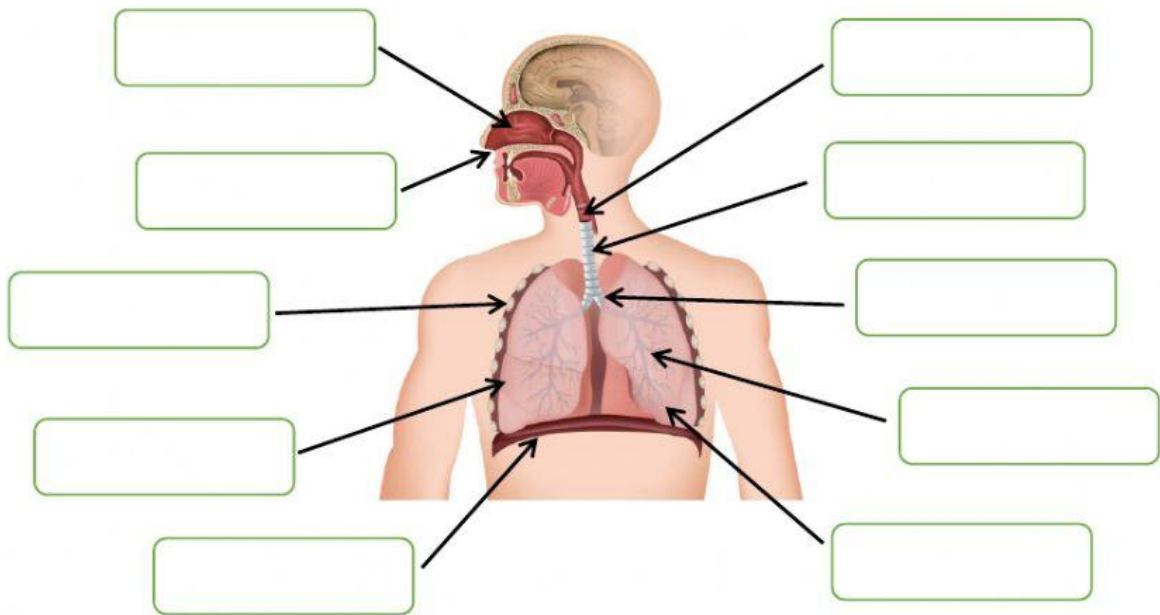


Skill Practice 2.1

Question 1

Identify the organ in respiratory system. (Drag and Drop)



Nasal cavity

Bronchiole

Nostril

Rib

Lung

Larynx

Pharynx

Trachea

Intercostal muscles

Alveolus

Bronchus

Diaphragm

Question 2

Mark (/) for the correct statements and (x) for the wrong statements about the human breathing mechanisms.

1	The rib cage moves downwards and inwards during inhalation.	
2	Volume of the thoracic cavity increases during exhalation	
3	Diaphragm contracts and flattens during inhalation.	
4	Air pressure inside the thoracic cavity increase during exhalation.	