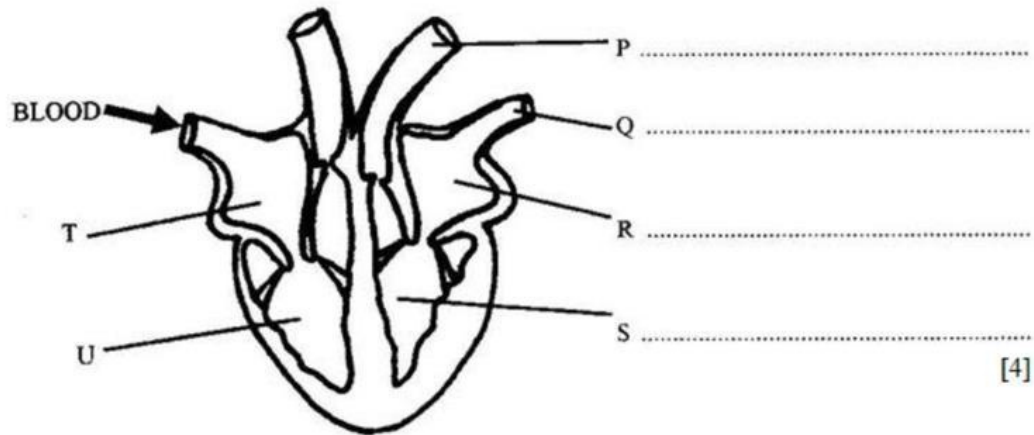


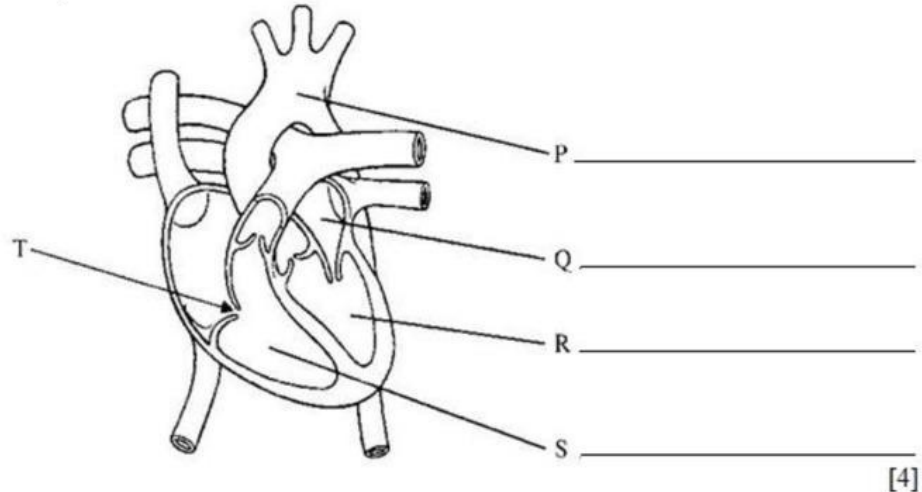
1. The diagram below represents the human heart seen from the front and cut in half.



- a. Write the names of the part of the diagram labelled, P,Q, R and S.
- b. The heart is an organ that is part of an important system of the body. What is the name of this system?
.....[1]
- c. When the part of the human heart labelled T fills with blood, from where does this blood come?
.....[1]
- d. When the part of the heart labelled U fills with blood and then contracts, to where does the blood go?
.....[1]
- e. If a person's average heart rate is 68 beats per minute, what would be the average heart beat in
- One hour?.....
 - Two days?.....[2]
- f. Name one chamber of the heart that normally contains oxygenated blood.
.....[1]

TOTALMARKS [10]

1. This diagram represents the human heart, seen from the front and cut in half.



- a. Write the names of the parts of the diagram labelled P,Q,R, and S.
- b. What is the function of the part labelled T on the diagram? _____
_____ [1]
- c. Describe one way that the blood in R is different from the blood in S.

_____ [1]
- d. The heart pumps both oxygenated and deoxygenated blood.
- i. Where does the blood become oxygenated? _____
- ii. Where does the blood become deoxygenated? _____ [2]
- e. (i) What kind of blood vessels carry blood away from the heart? _____
- (ii) What kind of blood vessel carry blood to the heart? _____ [2]

TOTAL MARKS [10]