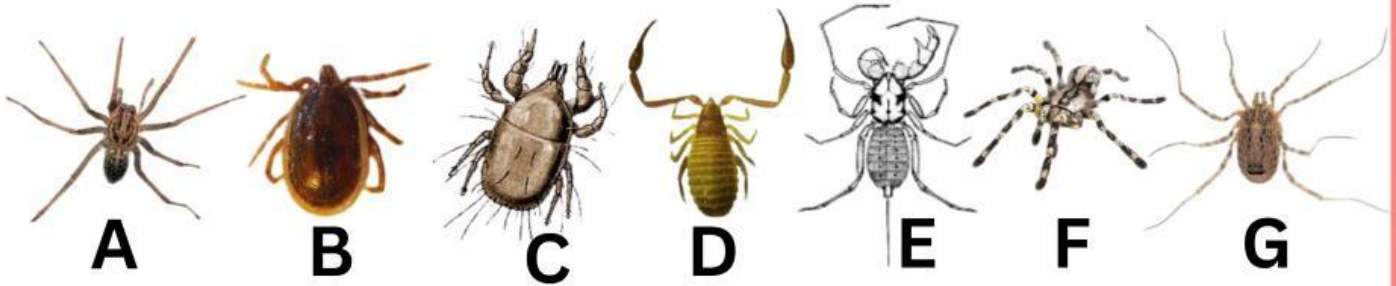


Name Roll No.

Dichotomous Keys



The diagram shows seven species of arachnid. Choose the letter of each species (A to G) in the correct box beside the key.

Key		
1. (a) Abdomen with tail (b) Abdomen without a tail	<i>Abaliella dicranotarsalis</i> Go to 2	Select the answer <input type="text"/>
2. (a) Legs much longer than abdomen and cephalothorax (b) Legs not much longer than abdomen and cephalothorax	Go to 3 Go to 4	<input type="text"/>
3. (a) Hairs on leg (b) No hairs on leg	<i>Tegenaria domestica</i> <i>Odielus spinosus</i>	Select the answer <input type="text"/> Select the answer <input type="text"/>
4. (a) Cephalothorax or abdomen segmented (b) Cephalothorax or abdomen not segmented	<i>Chelifera tuberculatus</i> Go to 5	Select the answer <input type="text"/>
5. (a) Abdomen and cephalothorax about the same size (b) Abdomen larger than cephalothorax	<i>Poecilotheria regalis</i> Go to 6	Select the answer <input type="text"/>
6. (a) Body covered in long hairs (b) Body not covered in hairs	<i>Tyroglyphus longior</i> <i>Ixodes hexagonus</i>	Select the answer <input type="text"/> Select the answer <input type="text"/>