

## *Do Gut Microbes Control Your Personality?*

*By Kathleen McAuliffe*

- Listen to the excerpt from Biologist Kathleen McAuliffe's Ted Talk and complete the sentences with the missing words or short phrases.

1. Kathleen McAuliffe is not a

\_\_\_\_\_, she's a

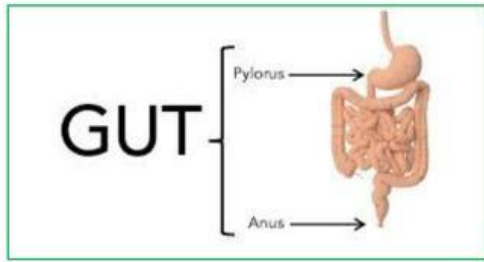
biologist.

2. According to McAuliffe, more

than half the cells in your body do not contain your own

\_\_\_\_\_.





3. The tiny tenants in your body, collectively known as \_\_\_\_\_, are most abundant in the gut.

4. Bubble mice are raised in \_\_\_\_\_ facilities.

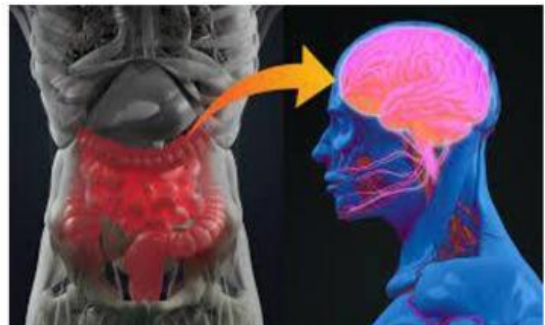
5. A normal mouse is a quick and eager \_\_\_\_\_.



6. Bubble mice lack natural \_\_\_\_\_.

7. Gut bacteria produce hoards of \_\_\_\_\_ compounds, including neurotransmitters.

8. The \_\_\_\_\_ nerve, running from the gut to the brain, facilitates the conversation between gut bacteria and the brain.



9. Gut bacteria can trigger inflammation and \_\_\_\_\_ when aggressive bacteria invade the gut wall.

10. Vagus nerve stimulation (VNS) has been approved by the FDA for the treatment of severe \_\_\_\_\_ and depression unresponsive to standard therapy.

11. Microbiota researchers are attempting to treat mental disturbances by changing the composition of \_\_\_\_\_ bacteria.



12. People with autism spectrum disorder often have high amounts of a bacteria molecule in their \_\_\_\_\_.

13. A bacterium found in yogurt, *Lactobacillus reuteri*, promotes social bonding in animal models of \_\_\_\_\_.

14. Good and bad bacteria have been linked to amyotrophic lateral sclerosis (ALS), a neurodegenerative disease also known as \_\_\_\_\_.

15. In Parkinson's disease, the misfolding of a protein called alpha-synuclein occurs in the \_\_\_\_\_.

16. According to recent research, the guts of some people harbor a strain of E. coli that may be linked to the misfolding of the Parkinson's \_\_\_\_\_.



17. The origins of Parkinson's disease involve a wave of misfolding proteins spreading up the \_\_\_\_\_ nerve.

18. According to McAuliffe, there is cause for \_\_\_\_\_ in understanding and treating these conditions.