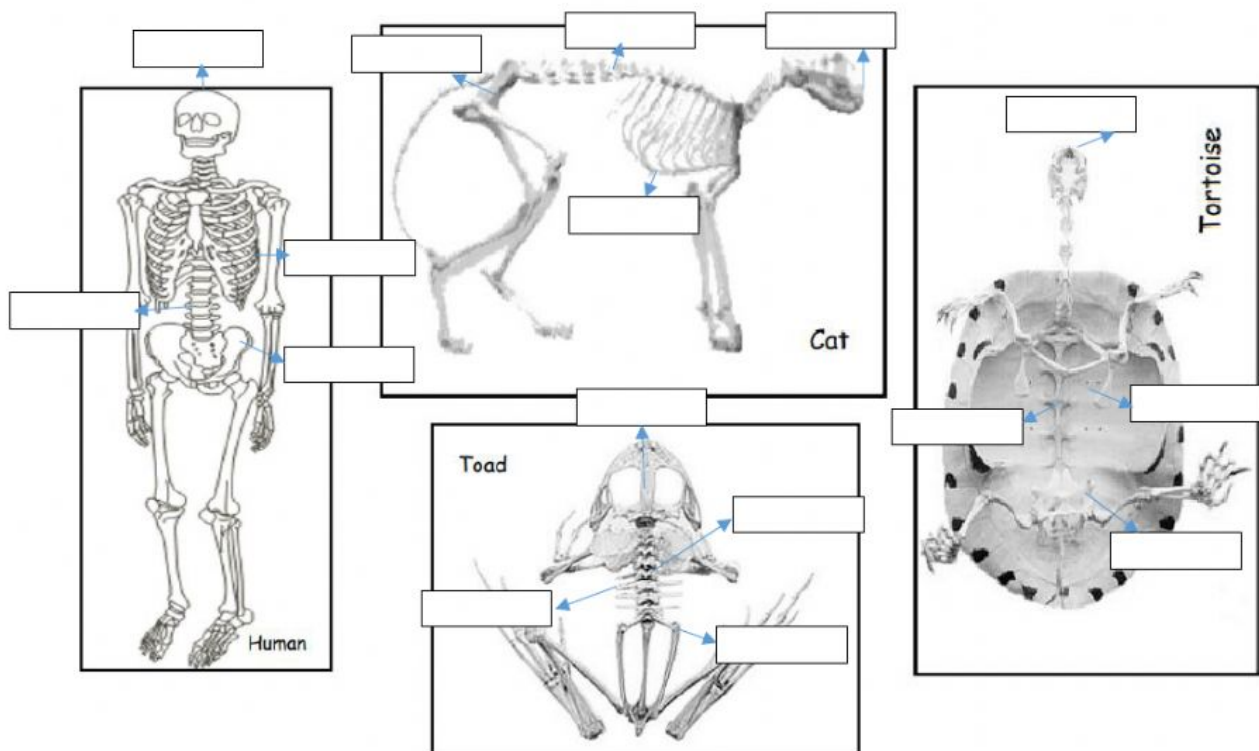


1. Below are the skeleton of a human, a cat, a toad and a tortoise. Drag and drop the following bones on each of the skeleton

<b>Spine</b>	<b>Skull</b>	<b>Pelvis</b>	<b>Ribs</b>
<b>Spine</b>	<b>Skull</b>	<b>Pelvis</b>	<b>Ribs</b>
<b>Spine</b>	<b>Skull</b>	<b>Pelvis</b>	<b>Ribs</b>
<b>Spine</b>	<b>Skull</b>	<b>Pelvis</b>	<b>Ribs</b>



2. All of the skeletons have ribs, but in which skeleton are the ribs difficult to see?

3. Match

Shape is  
different

Size is different

All vertebrates  
have ribs

All vertebrates  
have skull

Differences  
between the  
skeleton

Thing that all of  
the skeletons  
have in common