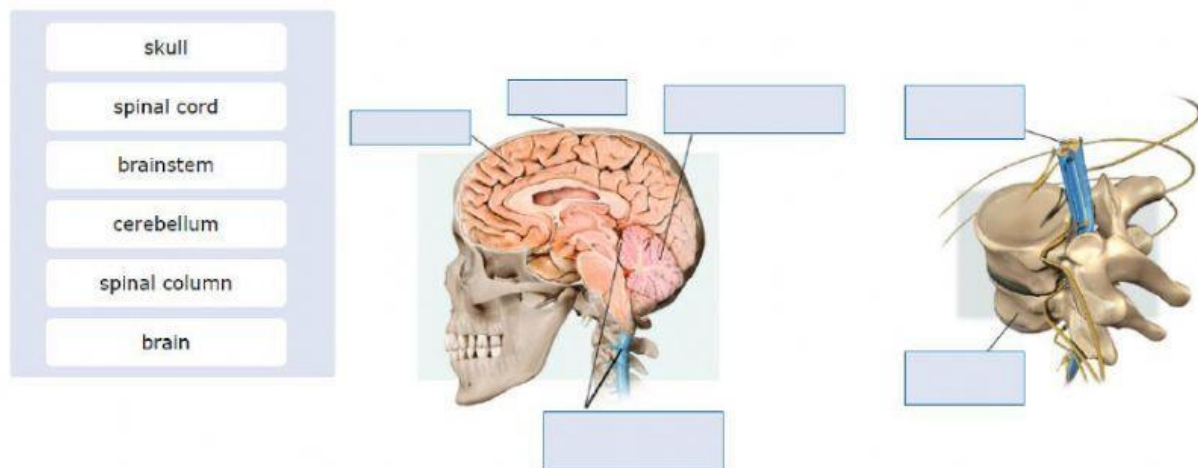


# The nervous system

Label the parts of the central nervous system:



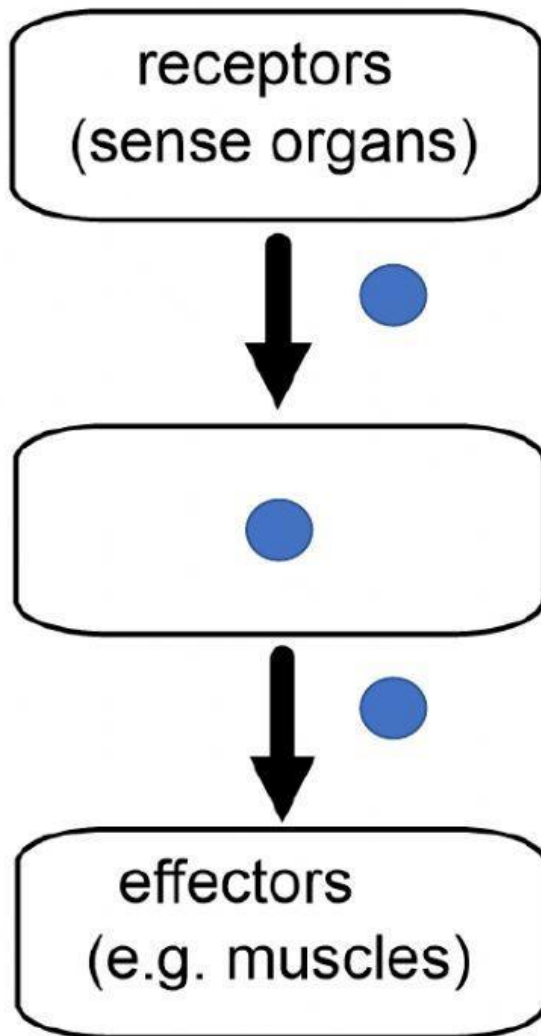
What part of the encephalon carries out these functions?

The \_\_\_\_\_ processes information and generates orders.

The \_\_\_\_\_ controls voluntary movements (e.g. walking) and balance.

The \_\_\_\_\_ controls automatic movements (e.g. breathing or heart rate)

The peripheral nervous system. Complete the diagram:



central nervous  
system

motor nerves

sensory nerves