

Go further

- 1 State whether the following statements are true or false:
 - a Web servers allow programs to be run over a network.
 - b One of the functions of the server is to evaluate each request for resources from a client and to respond.
 - c A server allows client computers on a network to communicate with one another.
 - d Devices can only connect to the internet when connected to a network with a wire.
 - e Email is a service offered on the internet.
 - f A web page can contain text, pictures, audio and video clips, and animations.
 - g Hyperlinks are used to link web pages.
 - h Firefox is used to access data from the internet.
- 2 Match the words to their correct explanations.

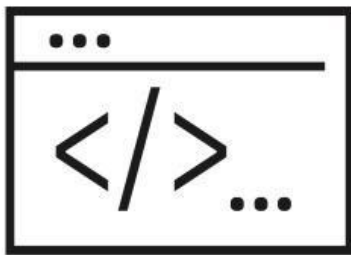
Application servers	are computers that form part of the network
Web servers	evaluate each request and then send the response
Client computers	allow programs to be run over a network
Servers	handle emails between users
Mail servers	hold and share web pages

Servers and clients

Name: _____



file servers store files in a centralised location so that everyone on the network has equal access to resources



application servers allow programs to be run over a network



web servers hold and share web pages



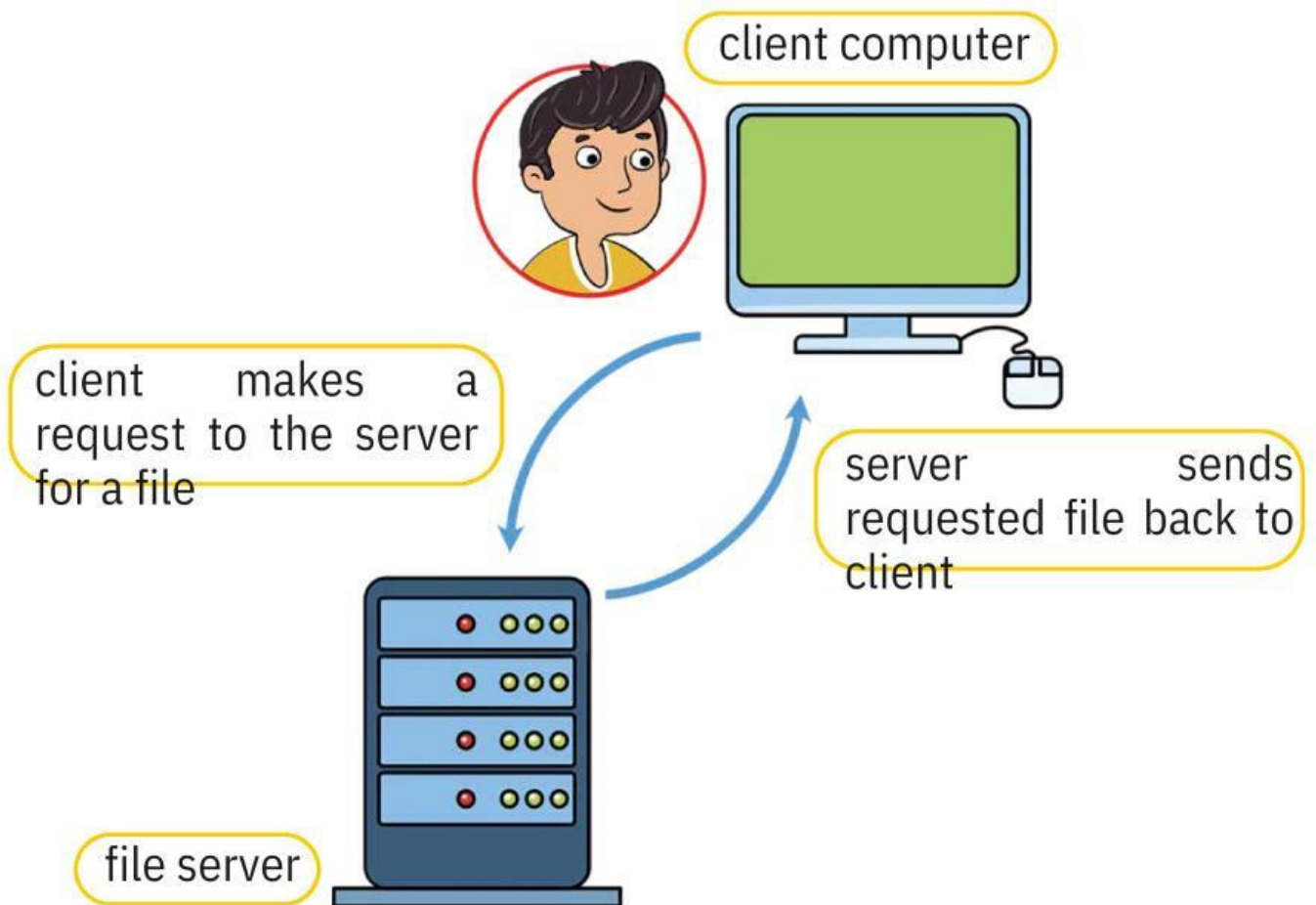
print servers forward documents from clients to be printed



mail servers handle emails between users

Client-server networks

Name: _____



Internet and World Wide Web

Name: _____

Fill in the blank spaces in the sentence using the words below.

connected

internet world computers

The _____ consists of many _____
that are _____ together around the
_____.



Unit 3 Word search

Name: _____

Can you find all the hidden words?

W	E	I	W	I	E	T	W	E	I	F
N	I	E	I	W	W	W	I	S	W	V
W	E	V	F	I	E	S	R	S	I	N
I	V	W	I	R	E	E	E	E	I	E
R	N	N	R	E	E	R	D	E	N	I
E	E	I	E	L	T	V	F	R	T	D
W	V	S	I	E	I	E	I	N	E	T
I	L	S	C	S	S	R	S	S	R	L
E	I	E	I	S	S	I	R	N	N	R
D	I	C	L	I	E	N	T	D	E	E
T	R	N	N	N	I	R	I	R	T	E

Hidden words

WIRED

WIRELESS

SERVER

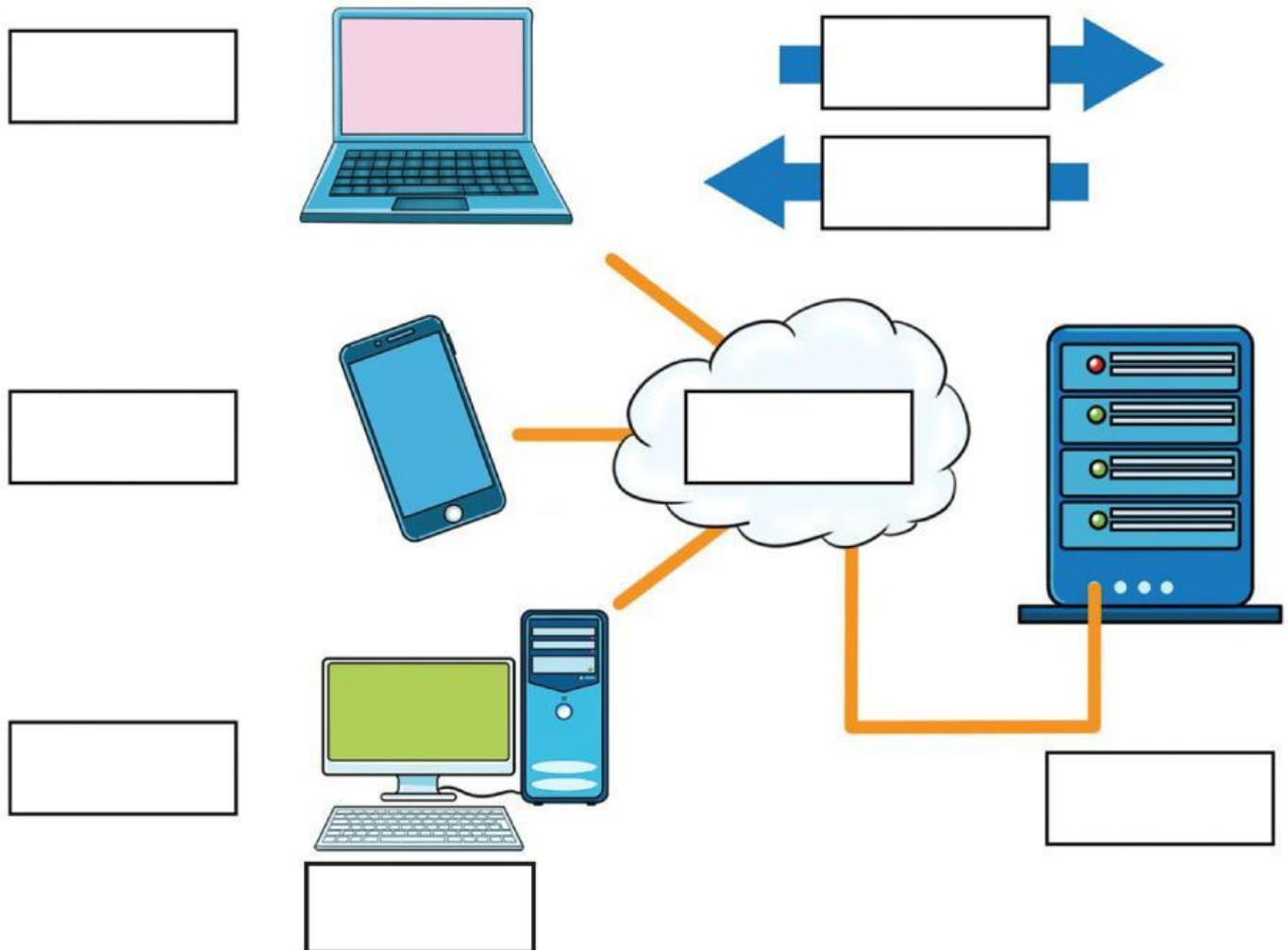
CLIENT

INTERNET

Internet and World Wide Web

Name: _____

Cut out the labels at the bottom of the page. Paste them in the correct place to complete the diagram.



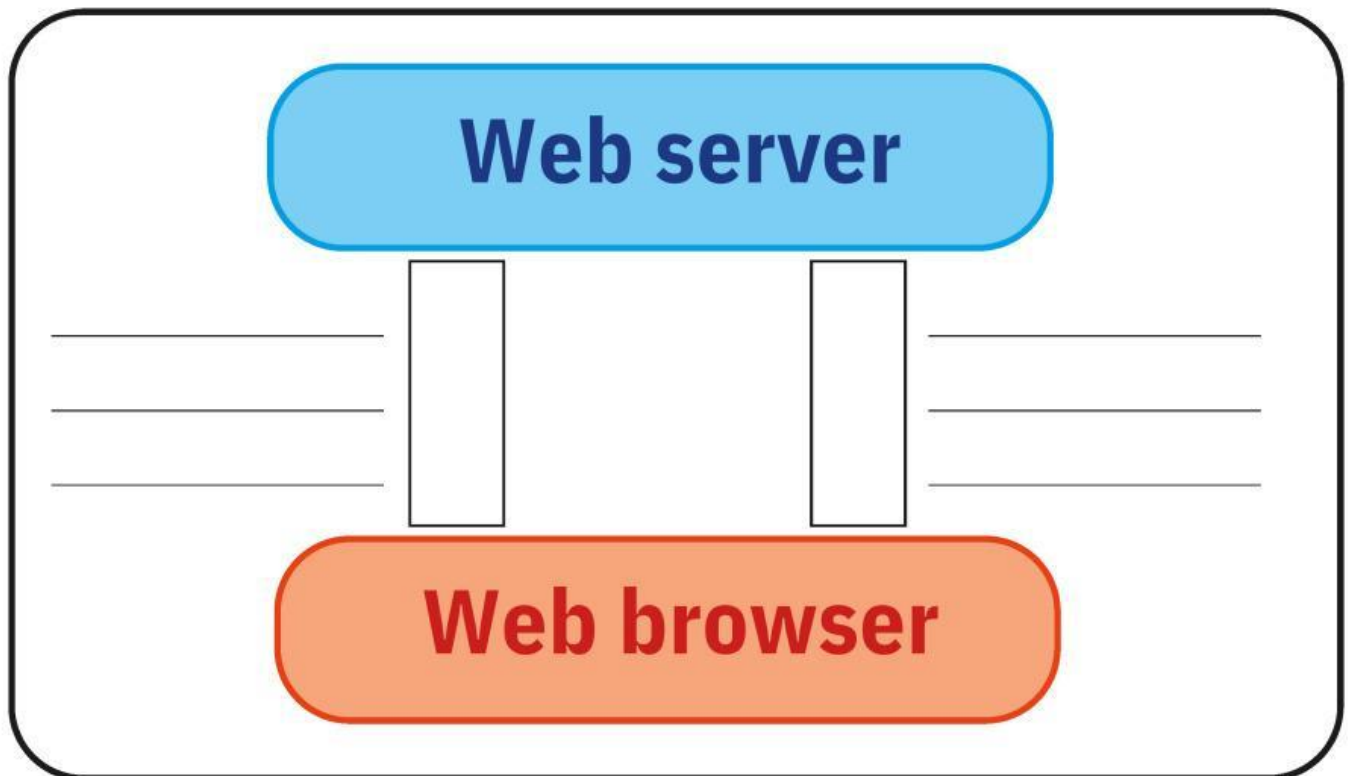
internet	server	smartphone/ tablet
desktop	laptop	request
response	client	

S

Internet and World Wide Web

Name: _____

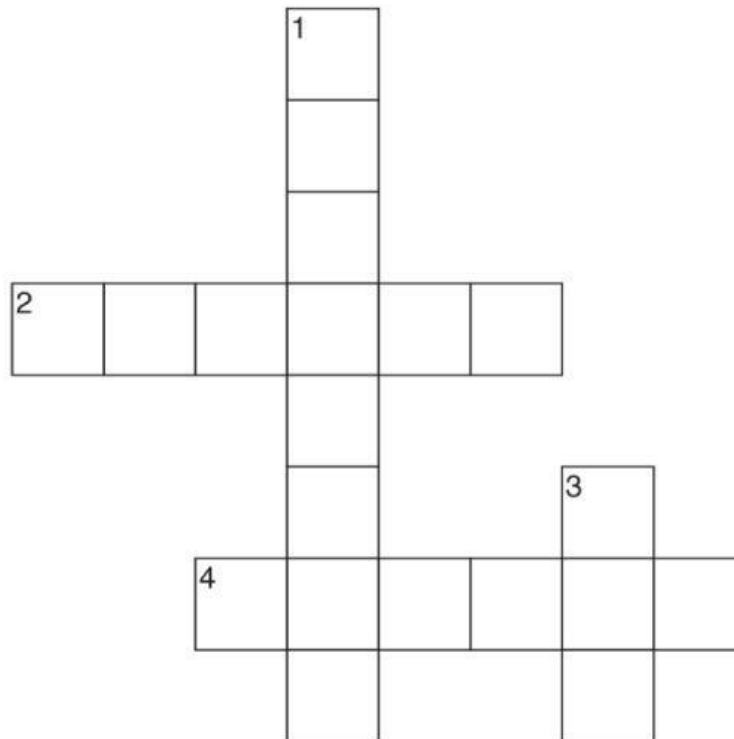
Add labels and arrows to complete the diagram.



Unit 3 Crossword

Name: _____

Solve the following puzzle based on the clues given!



Clues

Across

[2] A cl_ent is a computer that requests things

[4] A printer s_rver sends documents to a printer

Down

[1] Emails are sent over the inter__t

[3] All websites are part of the World Wide W__

Wi-Fi® and ethernet

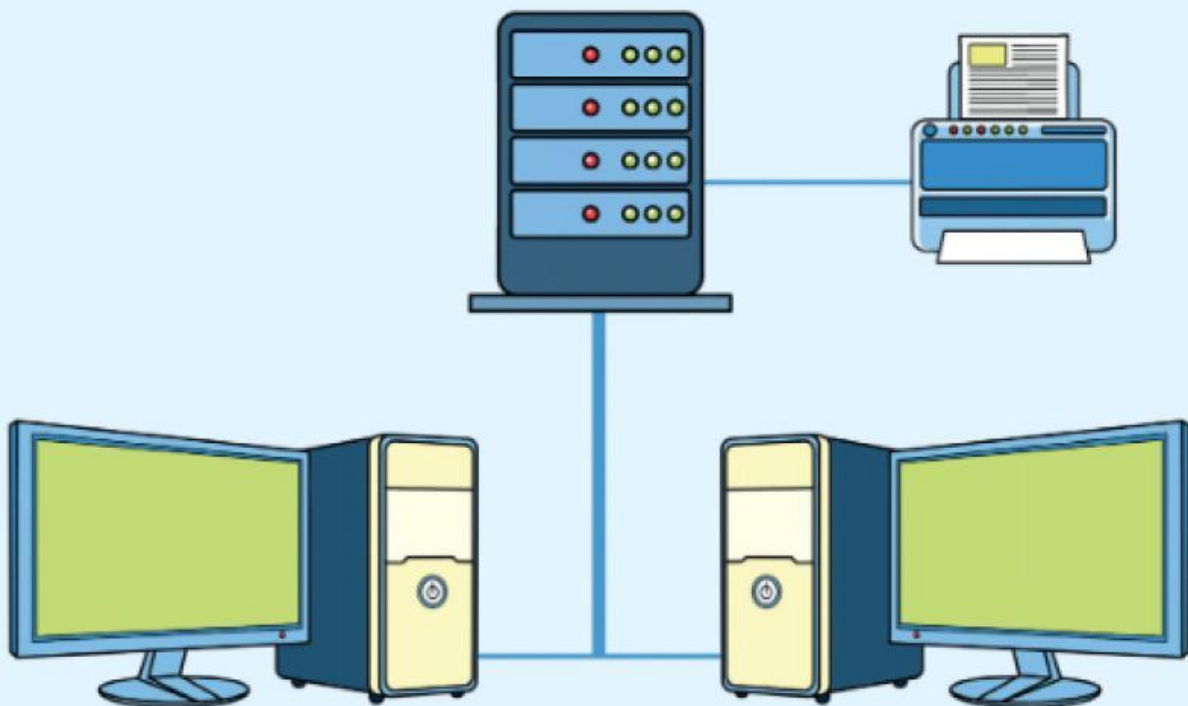
Name: _____

Complete the table.

	Wired networks	Wireless networks
Connected using	Ethernet twisted pair cable	Wi-Fi
Max. distance	100 metres	50 metres
Installation		
Speed		
Reliability		
Mobility		
Security		
Common devices		

★ Challenge yourself

- 1 A program that allows access to the World Wide Web is called a _____.
- 2 _____ networks tend to have faster transmission speeds than _____ networks.
- 3 Give two examples of communication services offered on the internet.
- 4 Why do some servers have a faster processor, more memory and more storage space than a client computer?
- 5 Which internet services enable users to locate and use electronic files stored on computers across the internet?
- 6 Tell your partner what type of network is shown in the picture below.
 - a State the names of the different devices shown in this picture.
 - b Explain how a page can be printed in this network.



- 7 What are two limitations of a wireless network?

My project

Nadia learnt about computer networks at school. When she got home, she advised her parents to set up a home computer network. However, they do not understand:

- what a network is
- the advantages and disadvantages of setting up a home network
- the role of clients and servers
- the differences between Wi-Fi and ethernet.

Prepare a report to answer the concerns of her parents and these questions below:

- 1 Which type of network (wired or wireless) would you recommend?
- 2 Write a short paragraph about the reasons for your choice of network.
- 3 Draw a sketch of what the computer network might look like.

What can you do?

Read and review what you can do.

- ✓ I know about servers and clients.
- ✓ I can describe the difference between the World Wide Web and the internet.
- ✓ I know about the differences between Wi-Fi and ethernet.

Great job! Now you understand more about networks, the internet and the World Wide Web!



Self-check

Name: _____

© Stocker Team/Adobe Stock Photo



I can do this.



I can do this, but I need to keep trying.



I can't do this yet.

© Stocker Team/Adobe Stock Photo

What can I do?			
1 I know what a server is.			
2 I know what a client is.			
3 I can explain the role of servers and clients in a network.			
4 I know what the internet is.			
5 I know what the World Wide Web is.			
6 I can describe the difference between the World Wide Web and the internet.			
7 I know what Wi-Fi® is.			
8 I know what ethernet is.			
9 I can describe the differences between Wi-Fi and ethernet.			



What do you need more help with?
Write the number or numbers.

I need more help with:
