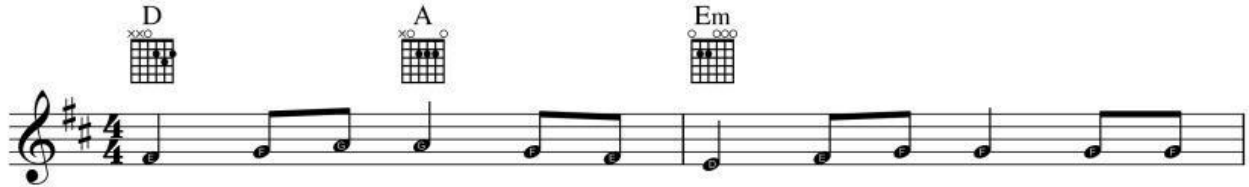


With a little help from my friends

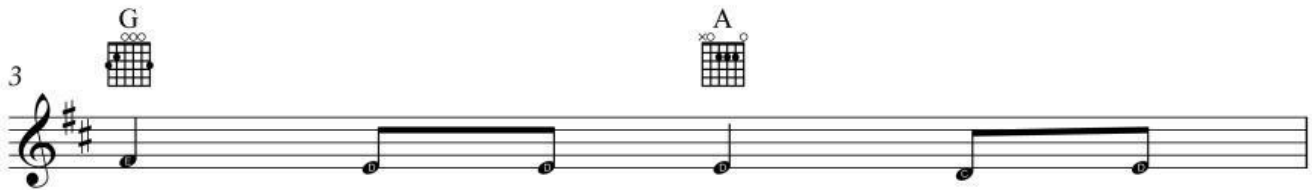


Moderato ♩ = 120

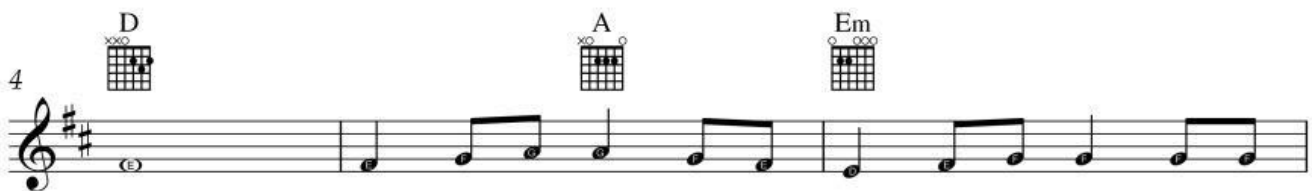
Lennon/McCartney



1. What would you think if I sang out of tune, would you
2. What do I do when my love is a - way, does it
3. Would you be - lieve in a love at first sight? Yes I'm



stand up and walk out on
wor - ry you to be a
certain - that it happens all the



E

me. Lend me your ears and I'll sing you a song and I'll
lone? How do I feel by the end of the day, are you
time. What do you see when you turn out the light? I can't



try not to sing out of key. Oh I get by with a lit - tle help from my
sad be-cause you're on your own. No,
tell you but I know it's mine. Oh,

10

D C G D

friends. Mm, I get high with a lit - tle help from my friends. Mm, I'm gon - na

13

C G 1. D 2. D Bm E7

try with a lit-tle help from my friends. friends. Do you need a - ny - bo - dy? I

18

D C G Bm E7

just need some-one to love. Could it be a - ny - bo - dy? I

22

D C G Repeat from start 3. D

want some - bo - dy to love. friends.