

My name is: _____

WORKSHEETDate: Saturday, Oct 8th 2022
FFS2

Teacher's feedbacks

Task 1. Read and choose the correct answer,**WHAT TIME IS IT?****1**a) It is four
o'clock.b) It is half past
four.**2**a) It's twenty-five
past eight.

b) It's ten past five

**3**a) It is a quarter
past fourb) It is a
quarter to four**4**a) It's two past
nine.b) It is a
quarter to two**5**

a) It is twelve o'clock.

b) It is nine o'clock.

**6**a) It is ten past
eleven.b) It is ten to
eleven.**7**

a) It is five to six.

b) It is a quarter
to seven**8**a) It is half past
four.

b) It is ten to four.

Task 2:

Read this. Choose a word from the box. Write the correct word next to numbers 1–5. There is one example.

A tiger

I don't live in a house but you can see me at the

(1)

I am a big animal, but I am not an (2) I am like

a cat. I stand on four (3) I can see at night with

my big green (4) and my favourite food is

(5) I am yellow and black.

What am I? I am a tiger.

example

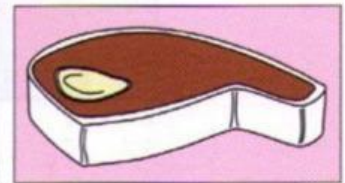
house



eyes



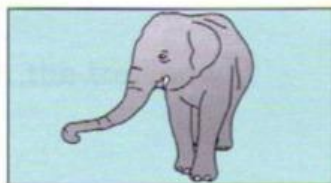
sun



meat



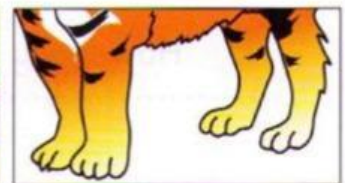
bag



elephant



zoo



legs

Task 3: Read and tick

This is Nelly. She's a nurse. She's tall and thin. She works at the hospital. She looks after sick people. She gets up at six o'clock in the morning. She takes a shower and puts on her clothes. Then she eats breakfast at half past six. At seven o'clock, she drives her car to the hospital. Nelly starts work at eight o'clock. She cleans the rooms in the hospital. Then, she helps the doctors. At twelve o'clock, she has lunch. She goes home at five o'clock. At home, she takes a shower and she cooks dinner. She has dinner at half past six in the evening. Then, she watches TV. At ten o'clock, she goes to bed.

	True	False
1. She is tall and fat.	<input type="checkbox"/>	<input type="checkbox"/>
2. She teaches English at school.	<input type="checkbox"/>	<input type="checkbox"/>
3. She eats breakfast at quarter past six.	<input type="checkbox"/>	<input type="checkbox"/>
4. She drives her car to the hospital at seven o'clock.	<input type="checkbox"/>	<input type="checkbox"/>
5. She starts work at eight o'clock.	<input type="checkbox"/>	<input type="checkbox"/>
6. At ten o'clock, she has lunch.	<input type="checkbox"/>	<input type="checkbox"/>
7. At twelve o'clock, she goes to bed.	<input type="checkbox"/>	<input type="checkbox"/>

Task 4:

Read the question. Listen and write a name or a number.

There are two examples.

**Examples**

What's the girl's name?

..... Kim

How old is she today?

..... 6

Questions

- 1 Where does Kim live? Street
- 2 What number is Kim's house?
- 3 How many people live in Kim's house?
- 4 What's Kim's grandpa's name?
- 5 How old is Kim's sister?